

*Quantities provided for information purposes only. Contractor responsible for verifying quantities.

*All new work shall comply with latest ADA.

*Coordinate with County for customer owned utilities

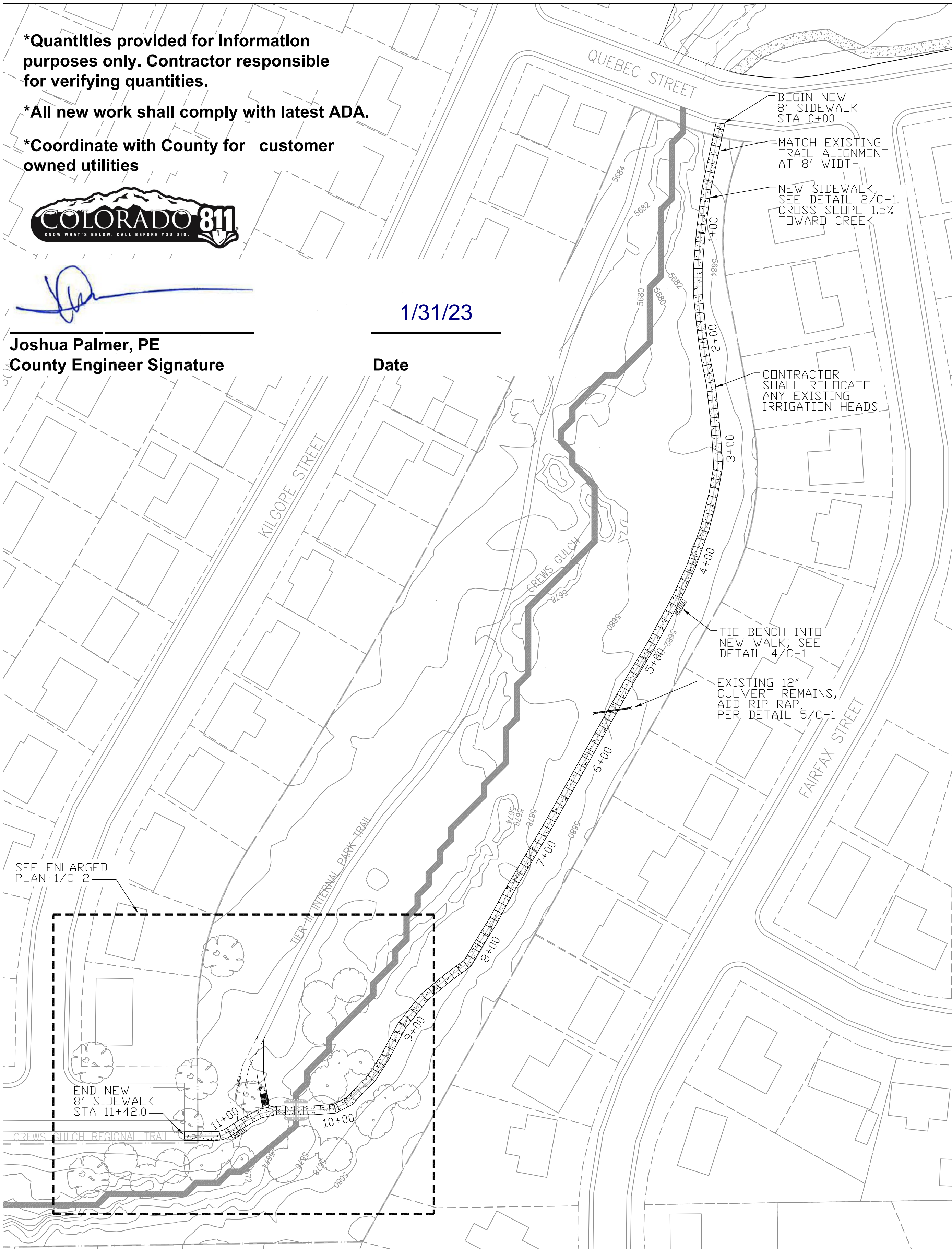


Joshua Palmer

Joshua Palmer, PE
County Engineer Signature

1/31/23

Date



SEE ENLARGED PLAN 1/C-2

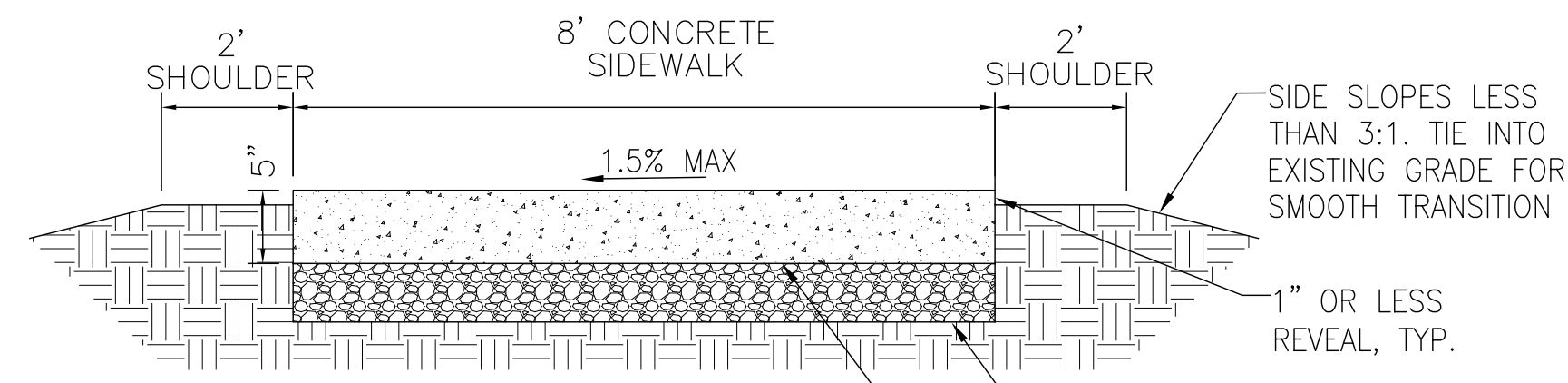
END NEW 8' SIDEWALK STA 11+42.0

1 SIDEWALK SITE PLAN

C-1 SCALE: 1" = 60'-0"



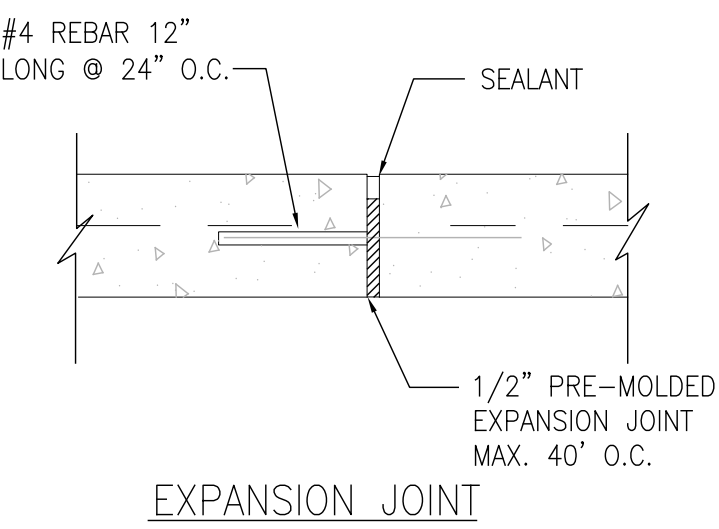
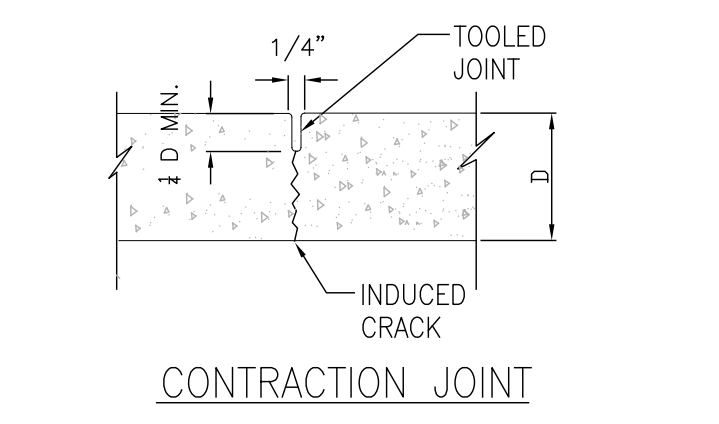
NORTH



- Notes:
1. Transverse contraction joints at 8' o.c. max
 2. Expansion joints at 40' o.c. max. and between new and existing concrete.
 3. Concrete to be 4500 psi air-entrained w/ medium broom finish.
 4. Sidewalk to be ADA compliant. Max. 5% longitudinal slope, 1.5% max. cross slope.

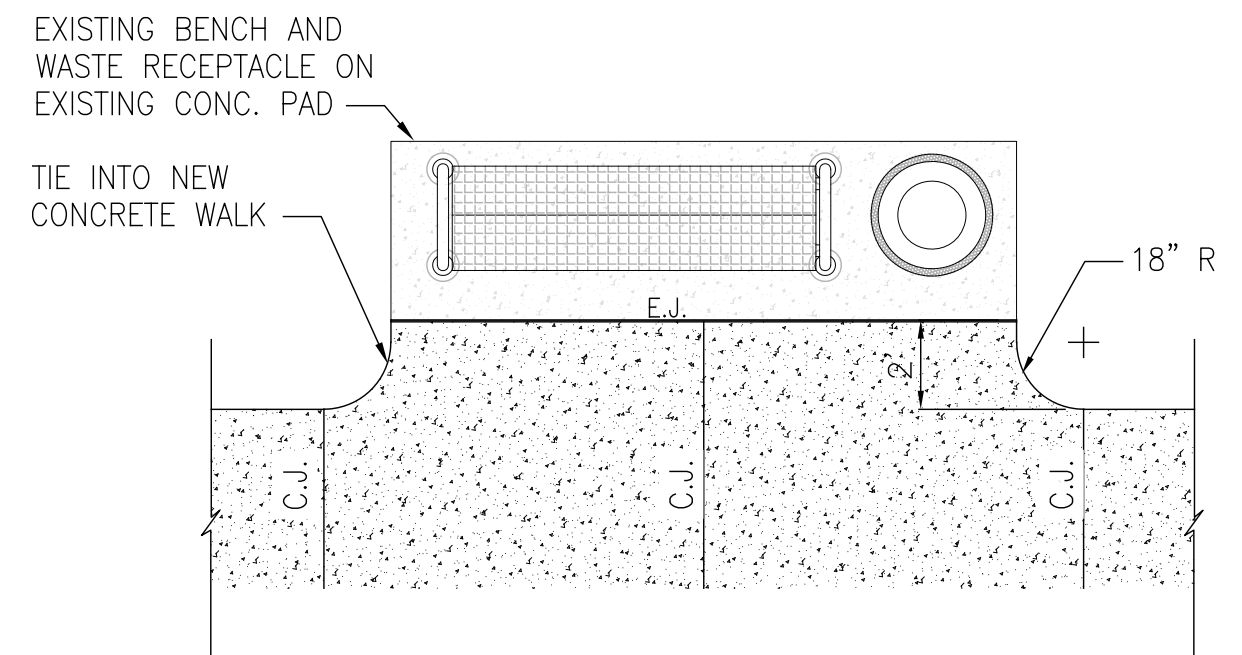
2 CONCRETE SIDEWALK

C-1 NO SCALE



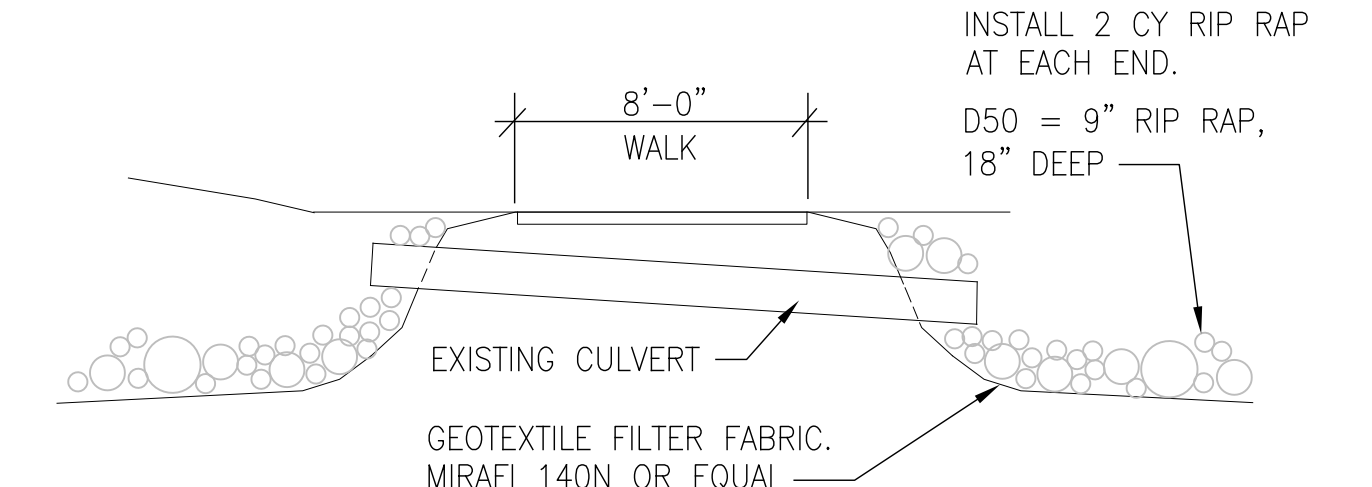
3 CONC. JOINTS

C-1 NO SCALE



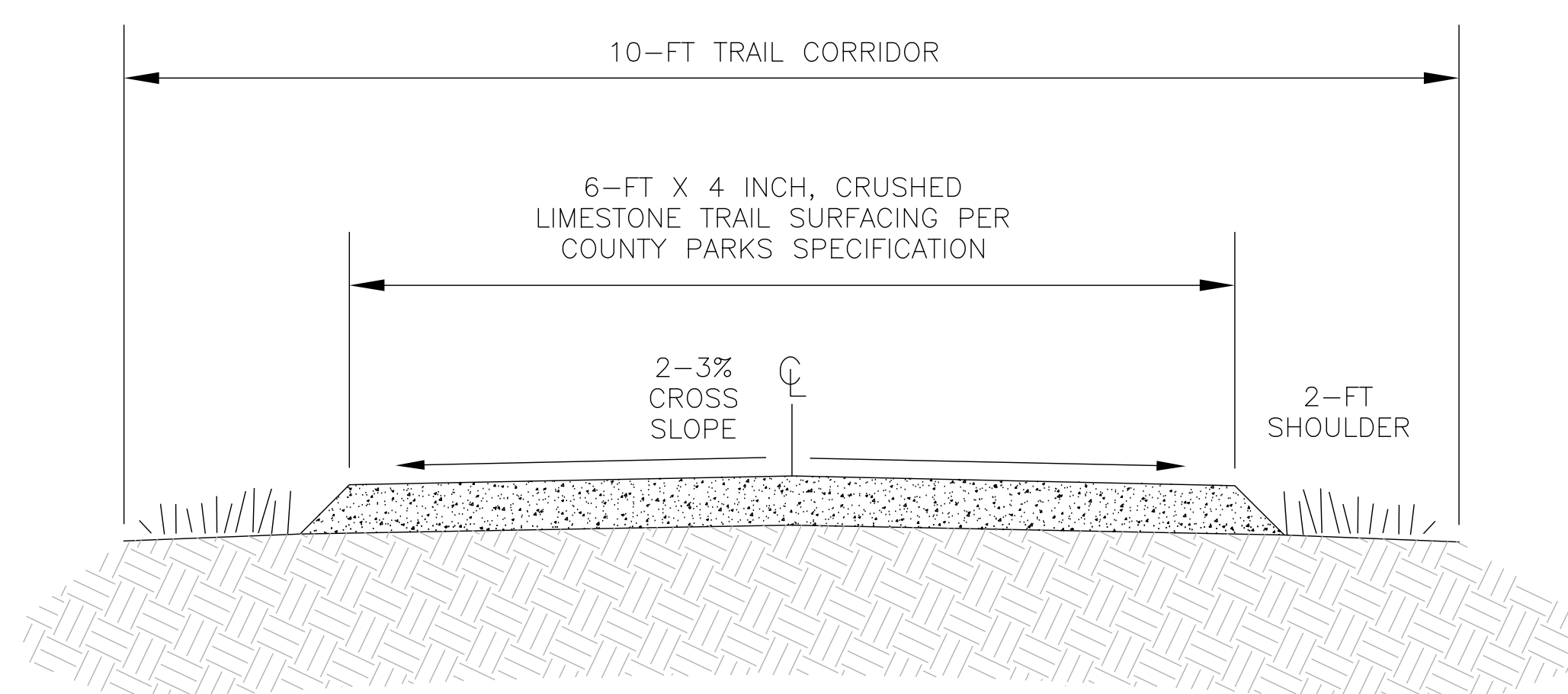
4 SIDEWALK AT BENCH

C-1 SCALE: 1" = 5'-0"



5 RIP RAP AT CULVERT

C-1 NO SCALE



6 TIER III CRUSHED LIMESTONE TRAIL

C-1 SCALE: 1" = 1'-0"

Revisions	By

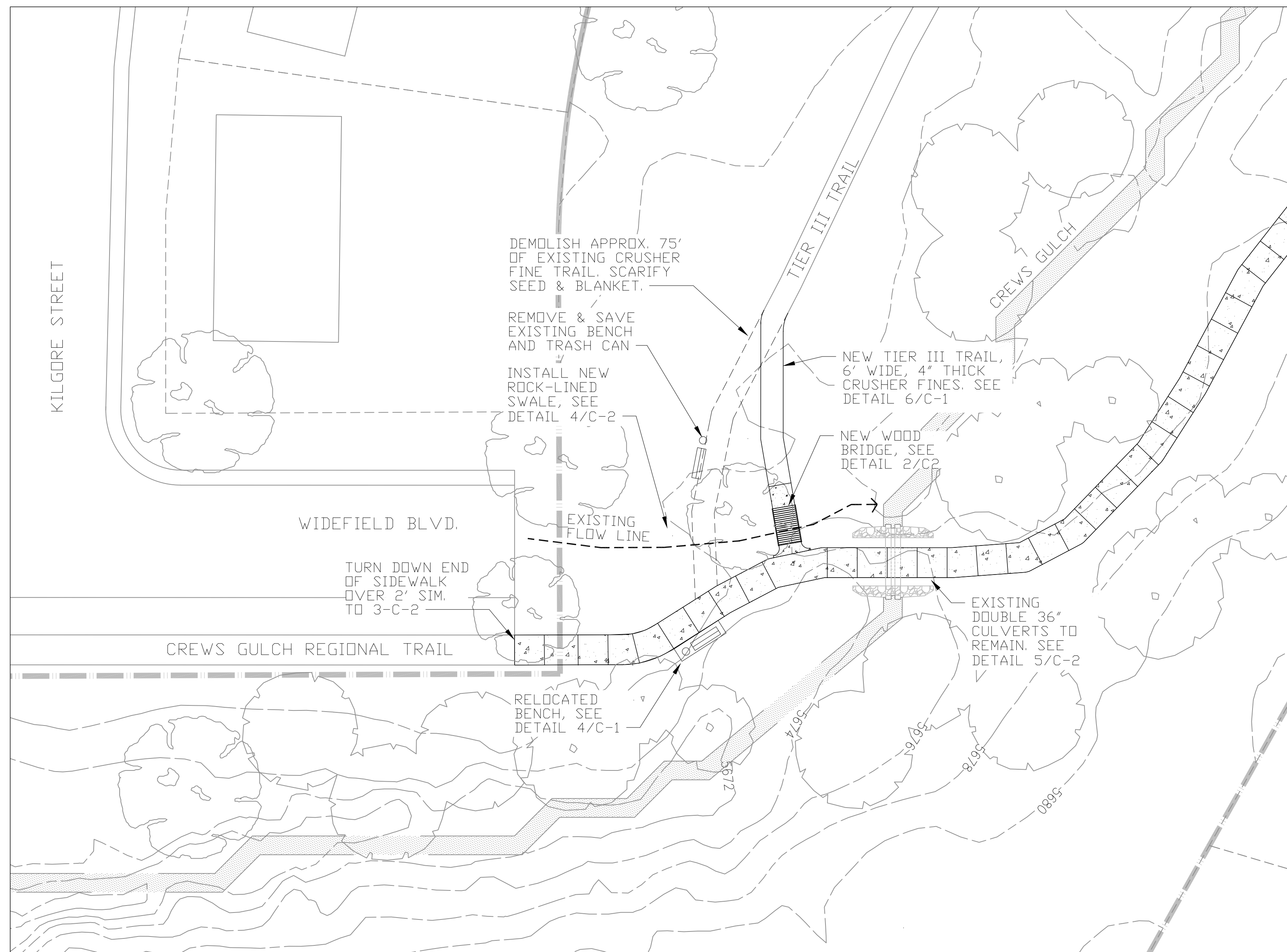
El Paso County Parks
2002 CREEK CROSSING
COLORADO SPRINGS, CO 80905



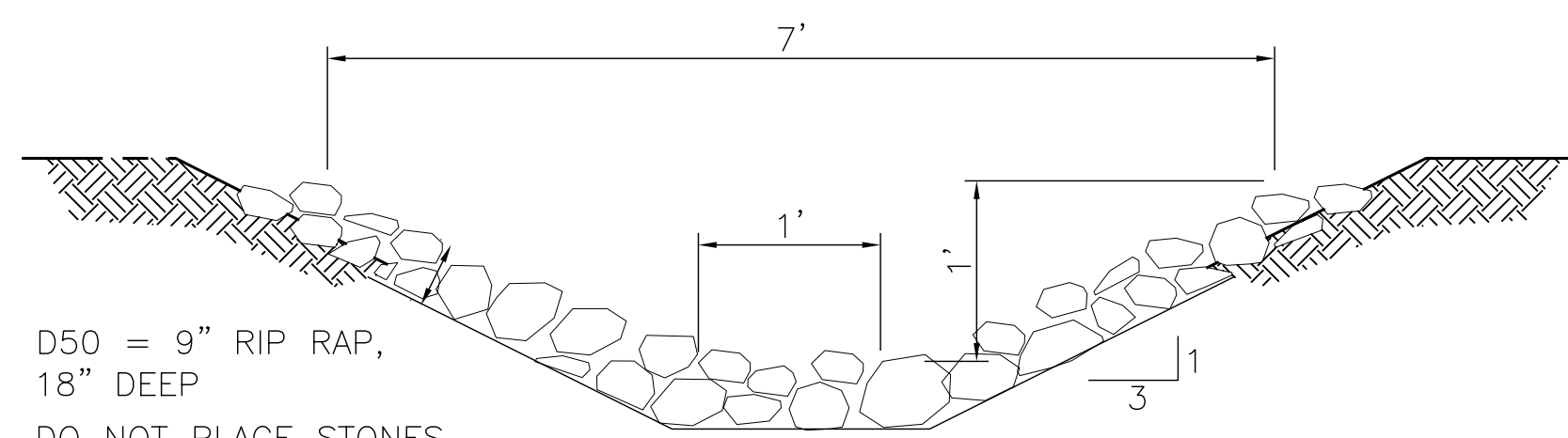
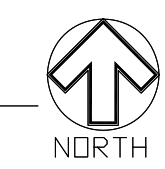
WIDEFIELD SIDEWALKS
DURY LANE & FONTAINE BLVD.
COLORADO SPRINGS, CO 80911
EL PASO COUNTY PARKS

DRAWN BY: GJS
DATE: 01-26-2023
SCALE: AS SHOWN
JOB# 1FB-23XX

SHEET NO:
C-1



1 ENLARGED PLAN
SCALE: 1" = 20'-0"



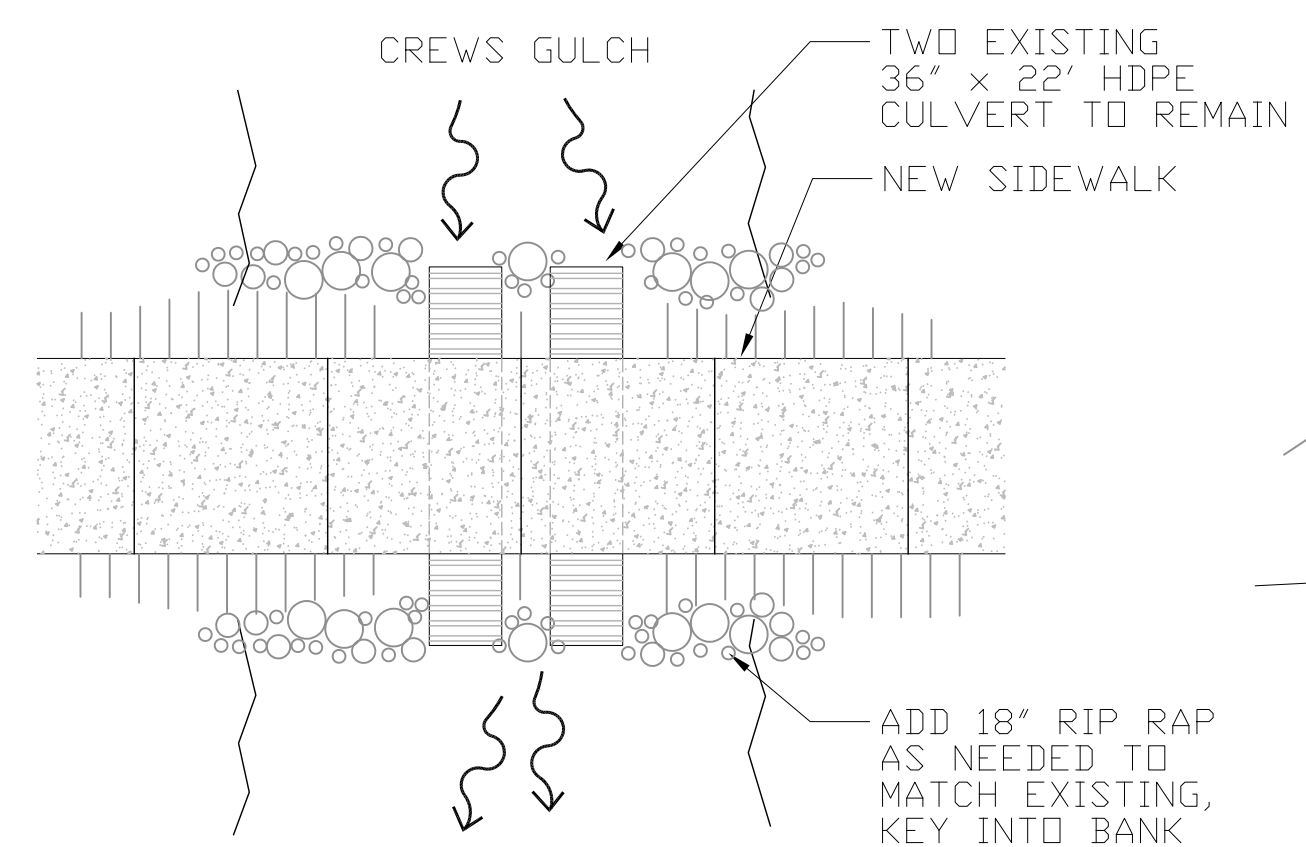
D50 = 9" RIP RAP, 18" DEEP
DO NOT PLACE STONES ABOVE TOP OF SWALE

KEY IN RIP RAP HALF WAY INTO GROUND

USE 18-24" RIP RAP AT END OF SWALE WHERE IT MEETS CREWS GULCH

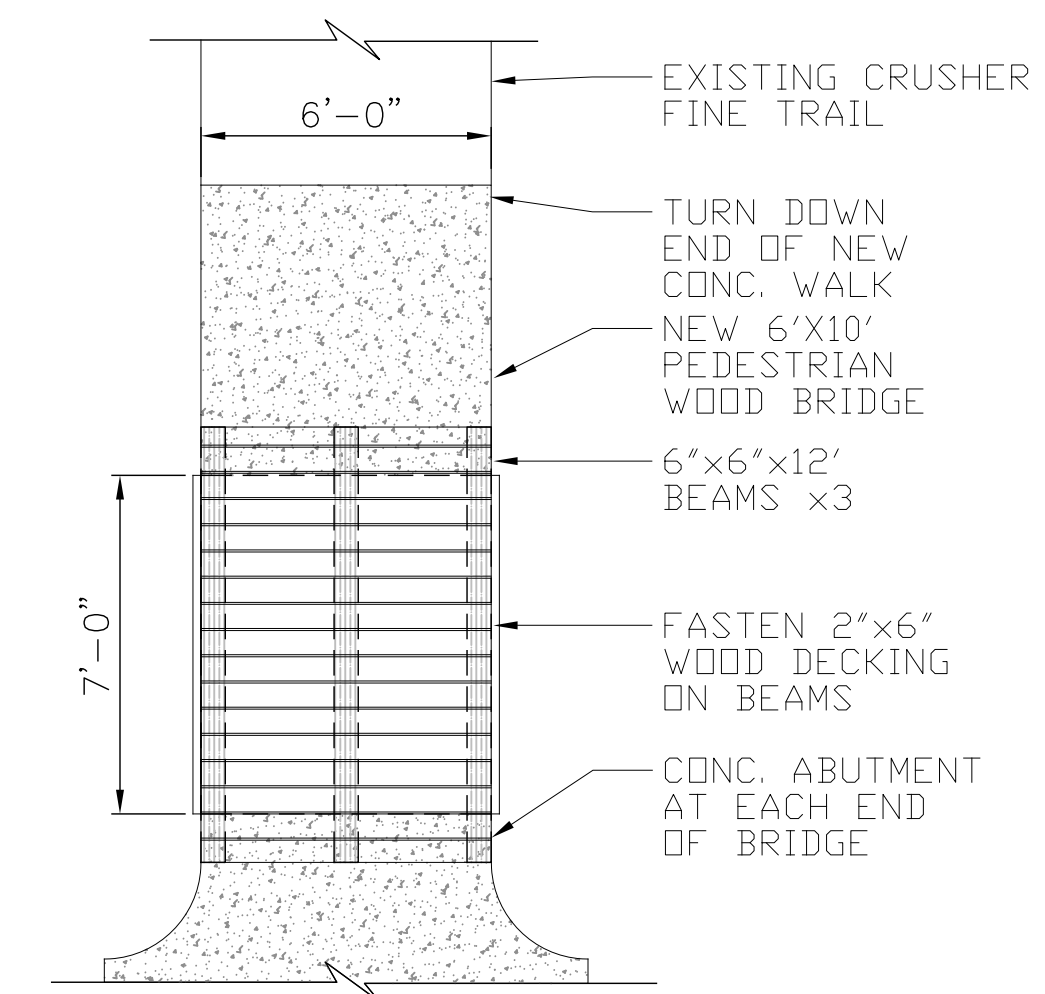
CROSS SECTION

4 ROCK LINED SWALE
SCALE: 1" = 1'-0"

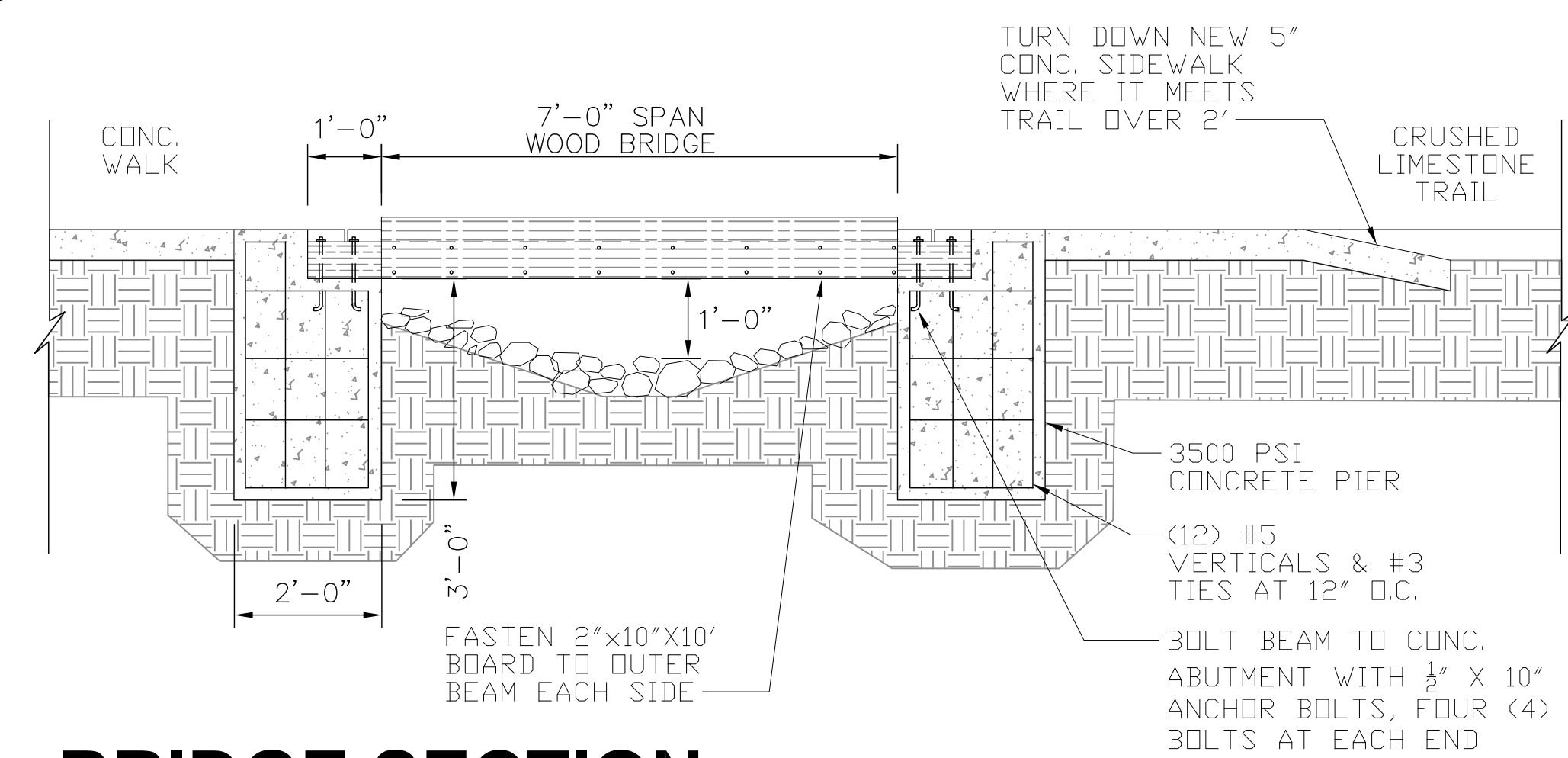


PLAN

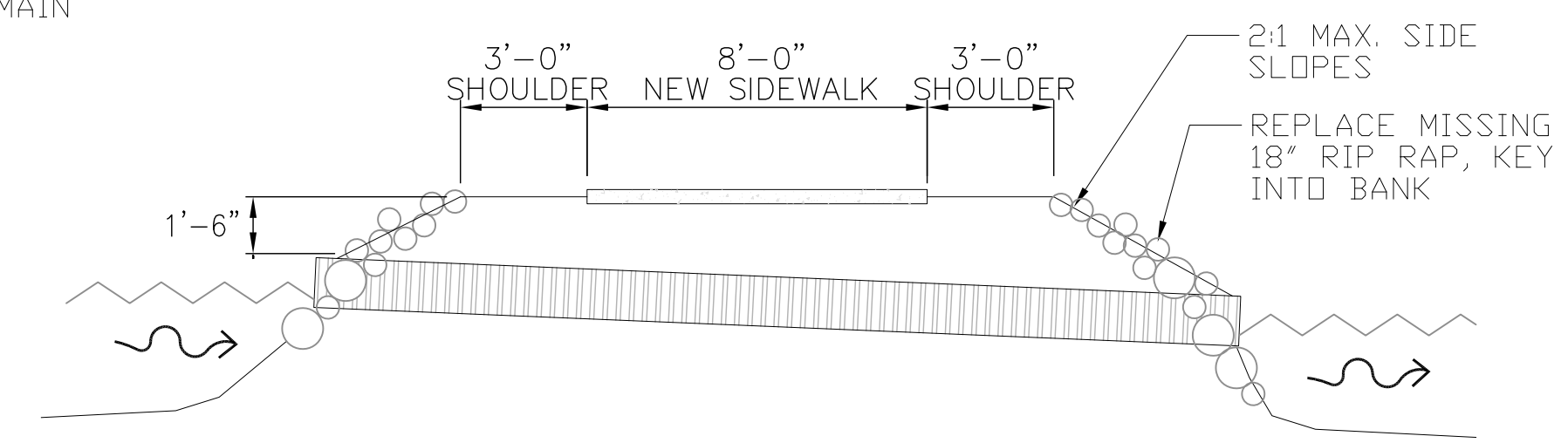
5 SIDEWALK AT CREEK
NO SCALE



2 NEW WOOD BRIDGE PLAN
SCALE: 1/4" = 1'-0"



3 BRIDGE SECTION
SCALE: 1/2" = 1'-0"



SECTION

Revisions	By

El Paso County Parks
2002 CREEK CROSSING
COLORADO SPRINGS, CO 80905



WIDEFIELD SIDEWALKS
DURY LANE & FONTAINE BLVD.
COLORADO SPRINGS, CO 80911
EL PASO COUNTY PARKS

DRAWN BY: GJS
DATE: 01-26-2023
SCALE: AS SHOWN
JOB# 1FB-23XX

SHEET NO:
C-2