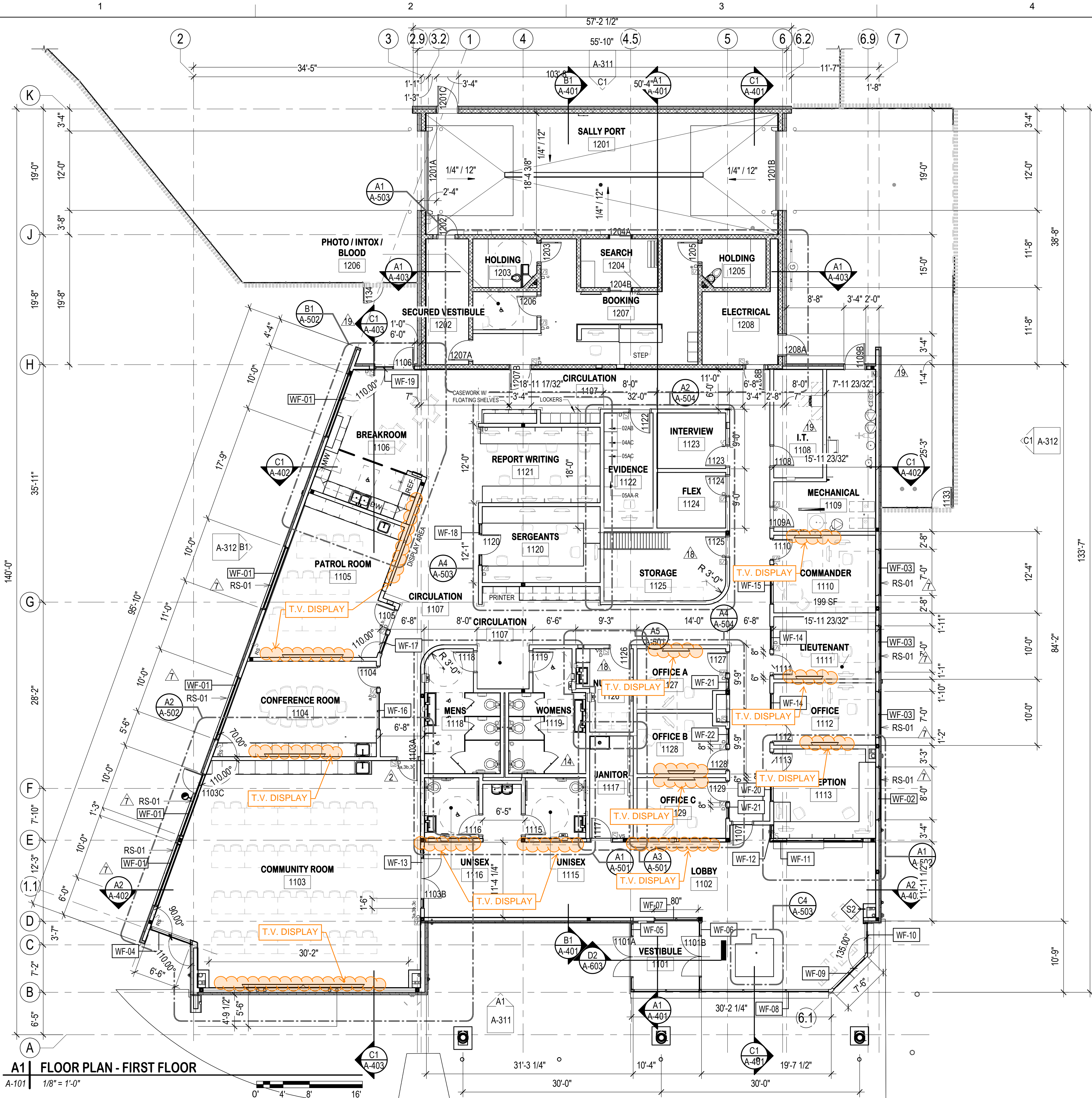
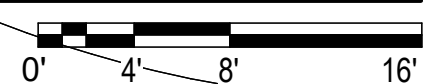
**A1 FLOOR PLAN - FIRST FLOOR**

A-101 1/8" = 1'-0"

**FLOOR PLAN NOTES**

1. DIMENSIONS INDICATED ARE TO FACES OF CMU/STUD/STRUCTURE MATERIALS AND GRID LINES (TYPICAL), UNLESS NOTED OTHERWISE.
2. WHERE DOORS IN METAL STUD/GYPSUM BOARD PARTITIONS ARE NOT SPECIFICALLY LOCATED ON THE PLANS WITH DIMENSION STRINGS, PROVIDE A MINIMUM HINGE-SIDE JAMB DIMENSION OF 6" FROM DOOR OPENING TO ADJACENT PERPENDICULAR WALLS. WHERE DOORS APPEAR TO BE CENTERED WITHIN CORRIDORS, LOCATE THE DOORS IN THE CENTER OF THE CORRIDOR.
3. ALL PARTITIONS ARE PARTITION TYPE S3 UNLESS INDICATED OTHERWISE. PARTITION TYPES CONTINUE AROUND CORNERS UNLESS INDICATED OTHERWISE.
4. PROVIDE SHEET STEEL BLOCKING AT ALL AREAS FOR OWNER OR CONTRACTOR FURNISHED EQUIPMENT.
5. PROVIDE SEALANT AT ALL CONCRETE SLAB TO WALL INTERSECTIONS.

D2C
ARCHITECTS

D2C ARCHITECTS, INC.
DENVER, COLORADO
COPYRIGHT © 2025
THESE DRAWINGS AND PLANS ARE
COPYRIGHTED AND ARE NOT TO BE USED
OR REPRODUCED WHOLLY OR IN PART
WITHOUT THE WRITTEN PERMISSION OF
D2C ARCHITECTS, INC.

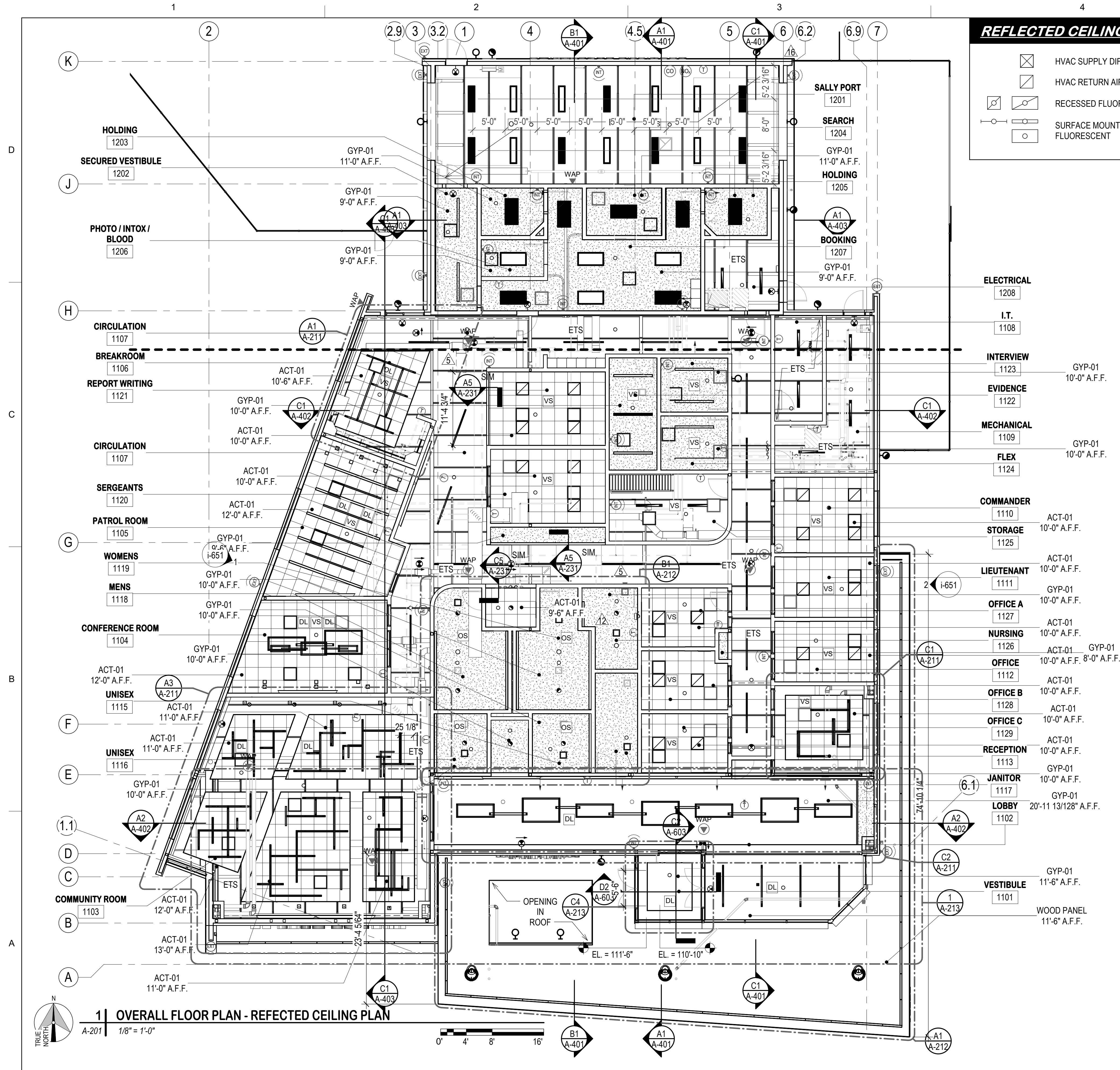
MARK	DESCRIPTION	DATE	APPROVED
19	RF-048 REVISIONS	10.02.2025	
18	AS-001	09.26.2025	
14	RF-047 REVISIONS	09.26.2025	
7	RF-047 REVISIONS ROUND 2	09.26.2025	
2	BUILDING DEPARTMENT COMMENTS ROUND 1	09.26.2024	

DESIGN BY: Designer	ISSUE DATE: OCTOBER 29, 2025	CONSULTANT'S PROJECT #
D2C PROJECT NUMBER 202207	CONSULTANT'S PROJECT #	
DRAWN BY: A-101	CHECKED BY: A-101	SOLICITATION NO.:
SENT BY: A-101	APPROVED BY: A-101	CONTRACT NO.:
PLOT SCALE: As Indicated	FILE NUMBER:	
SIZE: 22" x 34"	FILE NAME:	

**100%
CONSTRUCTION
DOCUMENTS**

EL PASO COUNTY SHERIFF'S DEPARTMENT
**FALCON - SHERIFF
SUBSTATION**
12062 ROYAL COUNTY DOWN RD. FALCON, COLORADO 80831
**OVERALL FLOOR PLAN, FIRST
FLOOR**

**SHEET
IDENTIFICATION
A-101**



REFLECTED CEILING PLAN LEGEND

	HVAC SUPPLY DIFFUSER		INCANDESCENT RECESSED LIGHTING		TRACK LIGHTING
	HVAC RETURN AIR GRILLE		INCANDESCENT SURFACE MOUNT LIGHTING		PARKING LOT LIGHTING
	RECESSED FLUORESCENT		INCANDESCENT WALL MOUNTED LIGHTING		HYDRANT
	SURFACE MOUNTED FLUORESCENT		PENDANT LIGHT		UTILITY POLE
			ACCESS PANEL		SPEAKER
			EXIT LIGHTING		SMOKE DETECTOR

REFLECTED CEILING PLAN NOTES

- ALL CEILINGS ARE TO BE 9'-0" ABOVE FINISH FLOOR, UNLESS NOTED OTHERWISE.
- SPEAKERS, SMOKE DETECTORS, AND HEAT DETECTORS ARE TO BE CENTERED WITHIN CEILING ELEMENTS. CENTER ALL CEILING MOUNTED ITEMS IN ACOUSTICAL PANELS, IN GYPSUM BOARD SOFFITS, AND BETWEEN OTHER CEILING MOUNTED FIXTURES (TYPICAL).
- ALL GYPSUM BOARD SOFFITS ARE TO BE HELD BACK A MINIMUM OF 2" FROM THE FACE OF ADJACENT MASONRY COLUMN OR PILASTER.
- SPRINKLER HEADS ARE TO BE CENTERED WITHIN CEILING ELEMENTS, ACOUSTICAL CEILING PANELS, AND BETWEEN OTHER CEILING MOUNTED FIXTURES.
- COORDINATE ACCESS PANEL LOCATIONS WITH LOCATIONS OF OTHER CEILING MOUNTED APPURTENANCES.
- REFER TO ELECTRICAL AND MECHANICAL DRAWINGS FOR FIXTURE TYPES.
- REFER TO MILLWORK DRAWINGS AND DETAILS FOR LIGHTING INCLUDED IN MILLWORK CONSTRUCTION.
- GYPSUM BOARD CEILINGS UP TO AN 8'-9" SPAN MAY BE FRAMED WITH 3 5/8" 25 GAUGE METAL STUDS SPACED 24" O.C.; AND GYPSUM BOARD CEILINGS OVER 8'-9" AND UP TO 10'-9" SPAN MAY BE FRAMED WITH 3 5/8" 25 GAUGE METAL STUDS SPACED 16" O.C. - CROSS BRACE TOP OF STUDS WITH 1 5/8" 25 GAUGE METAL STUDS 48" O.C. GYPSUM BOARD CEILINGS OVER 10'-9" SPAN SHALL BE FRAMED WITH SUSPENDED METAL GRILLAGE - HOLD GRILLAGE 1" CLEAR OF PARTITIONS AND INSTALL METAL EDGE AT PERIMETER OF GYPSUM CEILING BOARD.
- SOUND ISOLATION PARTITIONS SHALL BE SEALED AIRTIGHT FOR FULL HEIGHT TO PREVENT PASSAGE OF AIRBORNE SOUND. TAPE AND FINISH ALL GYPSUM BOARD JOINTS AND FASTENERS. PROVIDE SEALANT AT PERIMETER AND AT ALL PENETRATIONS.
- PAINTING EXPOSED AREAS INCLUDES STRUCTURAL STEEL AND HVAC DUCTS.
- PROVIDE EXPOSED DUCTWORK TIGHT TO STRUCTURE ABOVE UNLESS NOTED OTHERWISE.
- CLOUD REFERS TO A SUSPENDED ACOUSTICAL PANEL CEILING SYSTEM HAVING EDGE STRIPS IN LIEU OF COMING INTO CONTACT WITH A WALL.
- REFER TO A-001 FOR RCP LEGEND.
- ALL EXPOSED, UNFINISHED STRUCTURE, MEPF, AND IT, TO BE PAINTED TO MATCH CEILING.

D2C
ARCHITECTSD2C ARCHITECTS, INC.
DENVER, COLORADO
COPYRIGHT © 2025
THESE DRAWINGS AND PLANS ARE
COPYRIGHTED AND ARE NOT TO BE USED
OR REPRODUCED WHOLLY OR IN PART
WITHOUT THE WRITTEN PERMISSION OF
D2C ARCHITECTS, INC.

DATE	DESCRIPTION	MARK
09.04.2025	REVISIONS	
08.13.2025	13. REVISIONS	
08.13.2025	12. REVISIONS	
12.13.2024	5. BIDDING REVISIONS	

ISSUE DATE: OCTOBER 29, 2025	CONSULTANT'S PROJECT #
DESIGN BY: Designer	D2C PROJECT NUMBER 202207
DRAWN BY: A-201	CHECKED BY: A-201
DATE: 10/29/2025	DATE: 10/29/2025
FILE NAME: A-201	FILE NUMBER: A-201

100%
CONSTRUCTION
DOCUMENTSEL PASO COUNTY SHERIFF'S DEPARTMENT
FALCON - SHERIFF
SUBSTATION
12062 ROYAL COUNTY DOWN RD. FALCON, COLORADO 80831
OVERALL REFLECTED CEILING
PLAN - FIRST FLOORSHEET
IDENTIFICATION
A-201

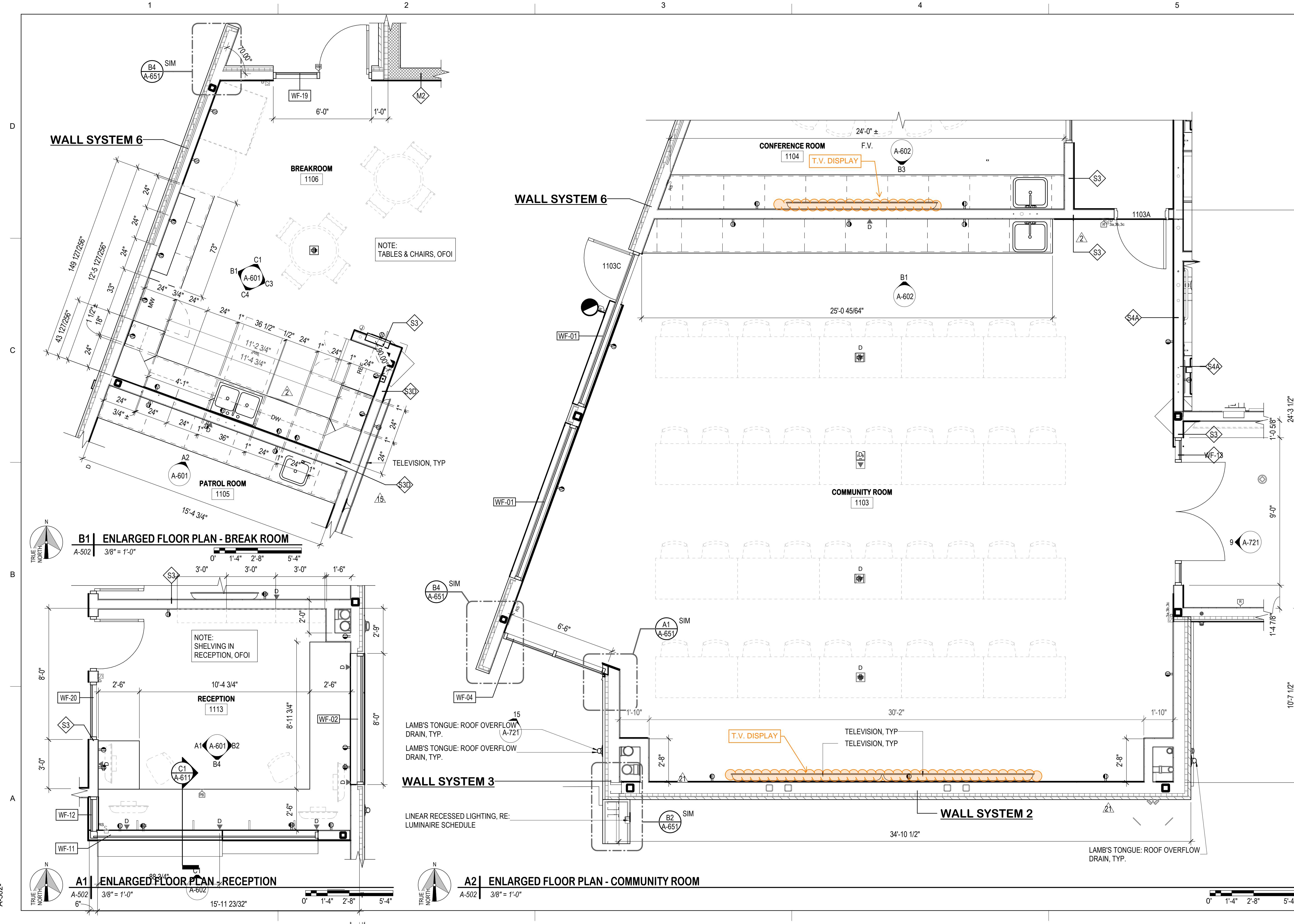
NO.	DATE	DESCRIPTION	APPROVED
1	10/22/2025	21. REVISED REVISIONS	
2	09/12/2025	15. DELETED CASEWORK - SHOP DRAWINGS	
3	09/22/2024	2. BUILDING DEPARTMENT COMMENTS ROUND 1	

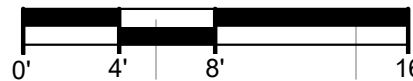
DESIGN BY: Designer	ISSUE DATE: OCTOBER 29, 2025	CONSULTANT'S PROJECT #
D2C PROJECT NUMBER 202207		
DRAWN BY: A-502	CHK BY: Checker	SOLICITATION NO.:
APPROVED BY: A-502	PLT DATE: 10/28/2025	CONTRACT NO.:
	FILE NUMBER:	
	FILE NAME:	

100%
CONSTRUCTION
DOCUMENTS

EL PASO COUNTY SHERIFF'S DEPARTMENT
FALCON - SHERIFF
SUBSTATION
12062 ROYAL COUNTY DOWN RD, FALCON, COLORADO 80831
LARGE SCALE PLANS

SHEET
IDENTIFICATION
A-502





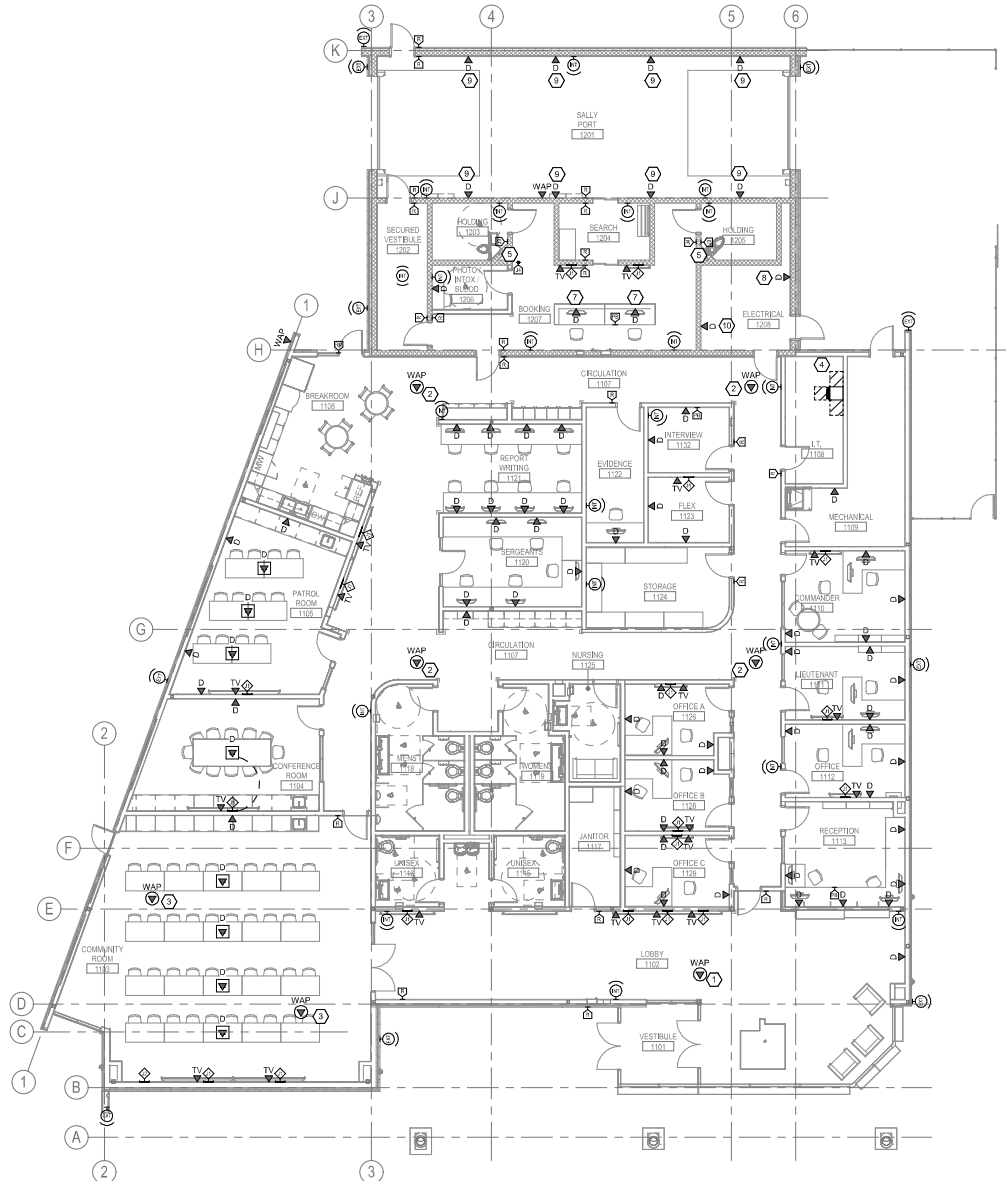
(THIS SHEET)

- (THIS SHEET)

- (THIS SHEET)

[illegible]

SHEET
IDENTIFICATION
T-002



GENERAL NOTES

(THIS SHEET)

1. **PULL BOX LOCATIONS SHALL BE INSTALLED FOR EVERY 100' OF CONTINUOUS CONDUIT PATHWAY.** CONTRACTOR SHALL PROVIDE PULL BOXES WITH 18" MINIMUM CONDUIT PORTS AND PORTAGE CABLES WHILE COMPLYING WITH NEC AND BLS STANDARDS.
2. **PULL BOX LOCATIONS SHALL BE INSTALLED SO THAT CONDUIT BEND RADIUS DOES NOT EXCEED 180 BETWEEN PULL BOXES.**
3. **TELECOMMUNICATIONS RACK SHALL HAVE A MINIMUM OF (2) TELECOMMUNICATIONS RACKS WITH A MINIMUM OF 18" DEEP PLYWOOD. PLYWOOD SHALL BE MOUNTED AT 8" AFF AND PAINTED WITH A MINIMUM OF 2 COATS FIRE RETARDANT LIGHT COLORED PAINT. THE FINISHING SHALL BE TO MATCH THE SURROUNDING AREA.**
4. **REFER TO ELECTRICAL DRAWINGS FOR TELECOMMUNICATION ROOM POWER REQUIREMENTS.**
5. **EMERGENCY RADIO RESPONDER COVERAGE - NEW BUILDINGS SHALL HAVE APPROVED RADIO COVERAGE FOR EMERGENCY SERVICES PROVIDED WITHIN A MINIMUM OF 100' OF ALL AREAS. COVERAGE LEVELS OF THE PUBLIC SAFETY COMMUNICATION SYSTEMS UTILIZED BY THE JURISDICTION, MEASURED AT THE INTERSECTION OF THE BUILDING PERIMETER AND THE COVERAGE AREAS, SHALL BE A MINIMUM OF 10 DBM. COVERAGE SHALL HAVE ACCEPTABLE EMERGENCY RESPONDER COVERAGE. COVERAGE MEASUREMENTS SHALL BE TAKEN AT THE LOCATION WHERE SIGNAL STRENGTH MEASUREMENTS IS 95 PERCENT OF ALL AREAS.**

KEY NOTES 

(THIS SHEET)

1. CONTRACTOR SHALL MOUNT WAP TO UNDERSIDE OF HARD LID CEILING USING OBERON 1018-06.
2. CONTRACTOR SHALL PENDANT MOUNT WAP TO OPEN CEILING USING OBERON 800A-00. WAP SHALL BE SUSPENDED 12" FROM FLOOR.
3. CONTRACTOR SHALL MOUNT WAP TO UNDERSIDE OF APPROXIMATE GLOBAL COORDINATE. FIELD COORDINATE FINAL MOUNTING LOCATION WITH ARCHITECT.
4. APPROXIMATE LOCATION FOR INCOMING SERVICES. CONTRACTOR SHALL ROUTE (2) 4" CONDUTTS TO UTILITY PULL BOX. COORDINATE ALL MOUNTING WITH CIVIL CONTRACTOR AND UTILITY PROVIDER.
5. EMERGENCY BUTTON INSIDE OF HOLDING CELL CONNECTED TO EMERGENCY ALARM SYSTEM. CONTRACTOR SHALL BE INTEGRATED INTO SECURITY SYSTEM AND SOUND AN AUDIBLE ALARM TO INDICATE FROM PANDANT MOUNTING IS IN USE.
6. DATA DROP FOR EMS. FIELD COORDINATE FINAL MOUNTING LOCATION.
7. PROVIDE DATA OUTLETS IN AN ACCESSIBLE LOCATION IN MELLOROW SUCH THAT DRAWERS AND DIVIDERS DO NOT BLOCK ACCESS TO DEVICE. COORDINATE EXACT LOCATION WITH ARCHITECT PRIOR TO RAVERS.
8. DATA DROP FOR SUS METERING. FIELD COORDINATE FINAL MOUNTING LOCATION.
9. MOUNT DATA OUTLET IN WATERPROOF JUNCTION BOX.
10. DATA DROP FOR LIGHTING CONTROL. FIELD COORDINATE FINAL MOUNTING LOCATION.

1 TECHNOLOGY PLAN - FIRST FLOOR
SCALE: 1/8" = 1'-0"

SCALE: 1/8" = 1'



D2C
ARCHITECTS



Phone: 800-200-9160
www.branchpattern.com
PROJECT NUMBER: 997009
BETTER BUILT ENVIRONMENTS

[illegible]

SOCIAL DATE: DECEMBER 4, 2024	CONSULTANT'S PROJECT #		SOLICITATION NO.:		CONTRACT NO.: FILE NUMBER:
	DOC PROJECT NUMBER		DRAWN BY:		
	202207		CHKD BY:		
	Designer: Checker:		Auditor: Checker:		
SUBMIT BY: Approver:		PLOT DATE: 12/3/2024		PLOT SCALE: As indicated	
FILE NAME: 22" x 34"					

**FALCON - SHERIFF
SUBSTATION**
2062 ROYAL COUNTY DOWN RD., FALCON, CO 80831

SHEET
IDENTIFICATION
T-101



SCALE: 1/8" = 1'-0"



(THIS SHEET)

1. VERTICAL DISTANCE BETWEEN CABLE TRAY AND CEILING SHALL NOT BE LESS THAN 12".
2. A MINIMUM OF 12" OF HORIZONTAL CLEARANCE ON ONE SIDE OF CABLE TRAY IS REQUIRED. HORIZONTAL DISTANCE BETWEEN CABLE TRAY AND CEILING OBSTRUCTIONS SHALL NOT BE LESS THAN 12".
3. WHERE CONDUITS PENETRATE FIRE RATED WALLS, PROPER FIRE STOPPING ASSEMBLIES SHALL BE UTILIZED.
4. CONTRACTOR SHALL BOND CABLE TRAY SYSTEM PER ANSI/NEC-707.4.
5. MOUNT LADDER STYLE CABLE TRAY AT 7' AFF.
6. BASKET STYLE CABLE TRAY SHALL BE MOUNTED ABOVE LIGHTING FIXTURES.
7. CABLING WITHIN SALLY PORT 1201 SHALL BE INSTALLED IN EMT CONDUIT AND STUBBED TO A CONSOLIDATION POINT NEAR 4" CONDUIT ENTRYWAY.

(THIS SHEET)

1. 2" CONDUIT SLEEVE MOUNTED ABOVE DOOR FRAME.
2. 2" CONDUIT STUBBED ABOVE CEILING.
3. 4" CONDUIT PATHWAY TO CABLE TRAY.
4. (2) 4" CONDUIT SLEEVES.
5. (2) 4" CONDUITS WITH RADIUS ADAPTERS ON EACH SIDE.
6. 12" VERTICAL LADDER STYLE CABLE TRAY SHALL BE INSTALLED BETWEEN CONDUIT RADIUS ADAPTER AND HORIZONTAL LADDER STYLE CABLE TRAY. CONTRACTOR SHALL SECURE HORIZONTAL CABLEING TO VERTICAL LADDER STYLE CABLE TRAY WHILE NOT EXCEEDING MANUFACTURER'S BEND RADIUS.

Phone: 800-200-9160
www.branchpattern.com
PROJECT NUMBER: 997009
BETTER BUILT ENVIRONMENTS

[illegible]

DESIGN BY: Designer	ISSUE DATE: DECEMBER 4, 2024	CONSULTANT'S PROJECT #	
DCS PROJECT NUMBER 6026287	CONSULTANT NO.:	SOLICITATION NO.:	CONTRACT NO.:
DRAWN BY: Author	CHK BY: Checker	FILE NUMBER:	
SEAL BY: Approver	PLOT DATE: 12/3/2024		
PLOT SCALE: As indicated	PLOT SCALE: 10:57:02 AM		
SHEET: 22' x 34'	FILE NAME:		

ISSUE FOR BID SET

**EL PASO COUNTY SHERIFF'S DEPARTMENT
FALCON - SHERIFF
SUBSTATION
12062 ROYAL COUNTY DOWN RD. FALCON, CO 80831
TECHNOLOGY CEILING PLAN -
FIRST FLOOR**

SHEET
IDENTIFICATION
T-201