

APPROXIMATELY 2,000 LINEAL FEET OF EQUIPMENT TO REMOVE

DUAL MOVING LOWER AND UPPER TRACK WEAVING BETWEEN AND THROUGH

TWO MAIN ROOMS CONNECTED BY CORRIDOR

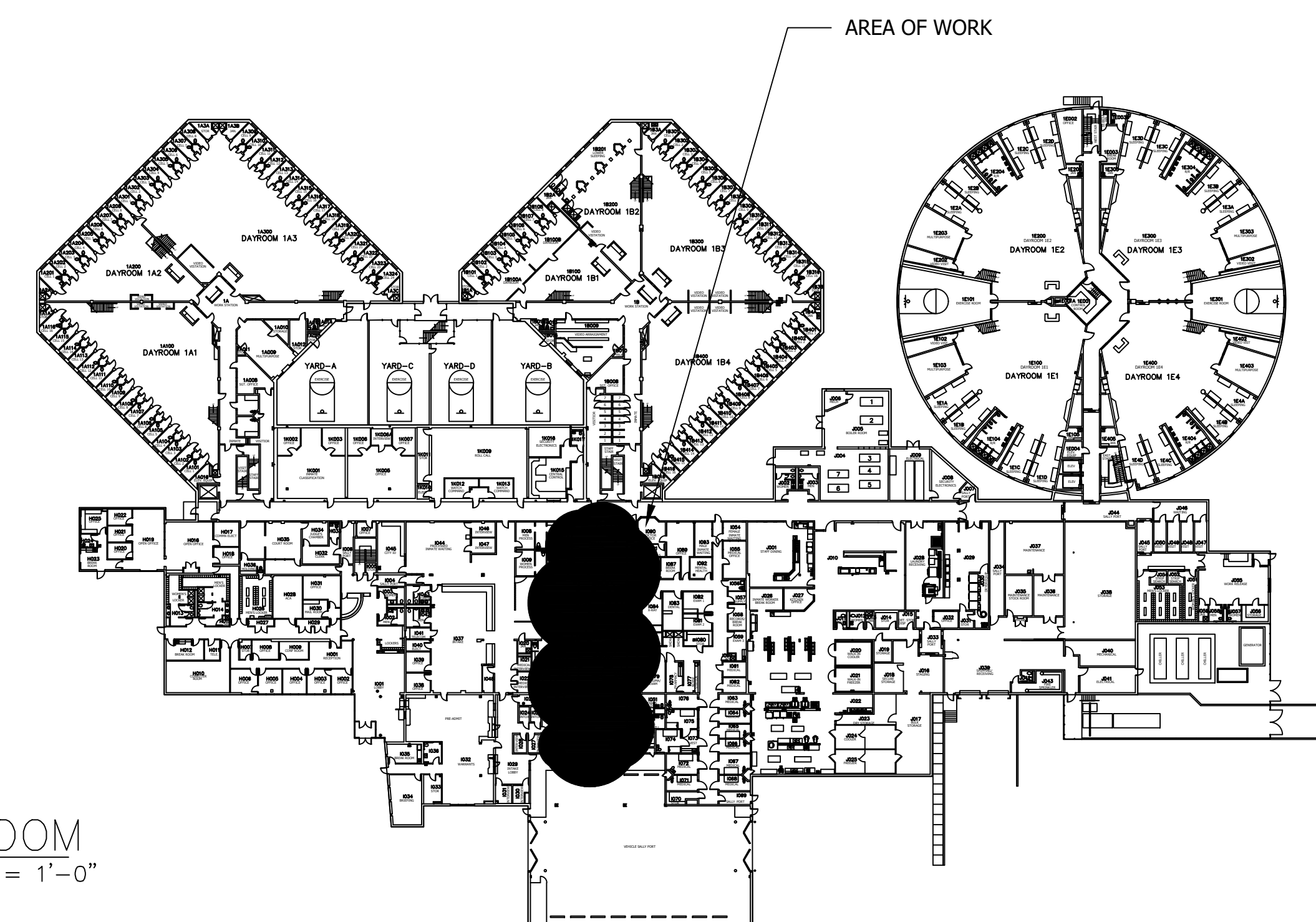
ELECTRICALLY POWERED (POWER TO BE DISCONNECTED AND CAPPED PRIOR TO CONTRACT WORK)

NO PNEUMATICS

CONTRACTOR TO PROVIDE OWN TOOLS FOR REMOVAL OF EQUIPMENT

DUMPSTER TO BE PROVIDED BY EL PASO COUNTY, COORDINATE WITH SHERIFF OFFICE FOR USE OF SALLYPORT

MINIMAL TO NO INTERACTION WITH INMATES DURING WORK, MOVEMENT THROUGH FACILITY LIMITED TO WORK AREA



CRIMINAL JUSTICE CENTER PROPERTY ROOM
 2743 E LAS VEGAS ST
 SCALE: 1/8" = 1'-0"