

EL PASO COUNTY FAIRGROUND TOPOGRAPHIC SURVEY

GENERAL NOTES

1. THE FIELD SURVEY WAS COMPLETED IN NOVEMBER OF 2019. FARNSWORTH GROUP AND THE SURVEYOR OF RECORD ARE NOT RESPONSIBLE FOR NOT LOCATING FEATURES WHICH WERE NOT VISIBLE OR ADDED OR REMOVED AFTER NOVEMBER OF 2019.
2. THIS TOPOGRAPHIC SURVEY IS NOT A MONUMENTED LAND SURVEY, LAND SURVEY PLAT OR IMPROVEMENT SURVEY PLAT AND IS SUBJECT TO ANY INACCURACIES THAT A SUBSEQUENT BOUNDARY SURVEY MAY DISCLOSE.
3. NO RIGHT OF WAY, EASEMENT OR BOUNDARY INFORMATION IS SHOWN ON THIS DRAWING OR WERE RESEARCHED BY FARNSWORTH GROUP.
4. PROJECT CONTROL POINTS WERE ESTABLISHED USING THE NATIONAL GEODETIC SURVEY (NGS) ONLINE POSITIONING USER SERVICE (OPUS) SOLUTION FOR THE NGS POINT 19 JH (PID #AE4284). CONTROL POINTS WERE SET AROUND FAIRGROUNDS FROM 19 JH AND A LEVEL BENCHLOOP WAS RUN BETWEEN THE ESTABLISHED POINTS TO ESTABLISH ACCURATE ELEVATIONS. THE CONTROL COORDINATES ARE BASED ON STATE PLANE NAD 83 CENTRAL (502) ZONE, GEIOD 12B. THE STATE PLANE COORDINATES HAVE BEEN SCALED BY 1.000376061 AND TRUNCATED BY 1,000,000 IN THE NORTHING AND 3,000,000 IN THE EASTING. THE PROJECT COORDINATES ARE NOTED ON THE SITE DRAWING.
5. BASIS OF BEARINGS: BEARINGS ARE BASED ON A COMPUTED LINE BETWEEN NGS POINT 19 JH AND FARNSWORTH CONTROL POINT "702" (A RED PLASTIC CAP ON A #5 REBAR), THE LINE HAVING A BEARING OF N 58°08'05" W.
6. BASIS OF ELEVATIONS: PROJECT ELEVATIONS ARE BASED ON THE OPUS SOLUTION OF THE NGS POINT 19 JH (PID #AE4284); WITH A NAVD 88 ELEVATION 6601.34FT.
7. ONLY VISIBLE UTILITIES WERE SURVEYED.
8. IT IS THE RESPONSIBILITY OF DESIGN PROFESSIONALS TO FIELD VERIFY UTILITY INFORMATION THAT COULD BE CRITICAL TO DESIGN EFFORTS. IT IS THE CONTRACTOR'S RESPONSIBILITY TO FIELD VERIFY THE SIZE, MATERIAL, LOCATION AND ELEVATION OF ALL UTILITIES PRIOR TO COMMENCEMENT OF CONSTRUCTION.
9. NOTICE: ACCORDING TO COLORADO LAW YOU MUST COMMENCE ANY LEGAL ACTION BASED UPON ANY DEFECT IN THIS SURVEY WITHIN THREE YEARS AFTER YOU FIRST DISCOVER SUCH DEFECT. IN NO EVENT MAY ANY ACTION BASED UPON ANY DEFECT IN THIS SURVEY BE COMMENCED MORE THAN TEN YEARS FROM THE DATE OF THE CERTIFICATION SHOWN HEREON.
10. ACCORDING TO THE COLORADO STATE BOARD OF LICENSURE FOR ARCHITECTS, PROFESSIONAL ENGINEERS AND PROFESSIONAL LAND SURVEYORS RULE 6.2.2 THE SURVEYOR'S CERTIFICATION IS:
 - a. BASED UPON THE PROFESSIONAL LAND SURVEYOR'S KNOWLEDGE, INFORMATION AND BELIEF,
 - b. IN ACCORDANCE WITH APPLICABLE STANDARDS OF PRACTICE, AND
 - c. NOT A GUARANTY OR WARRANTY, EITHER EXPRESSED OR IMPLIED.

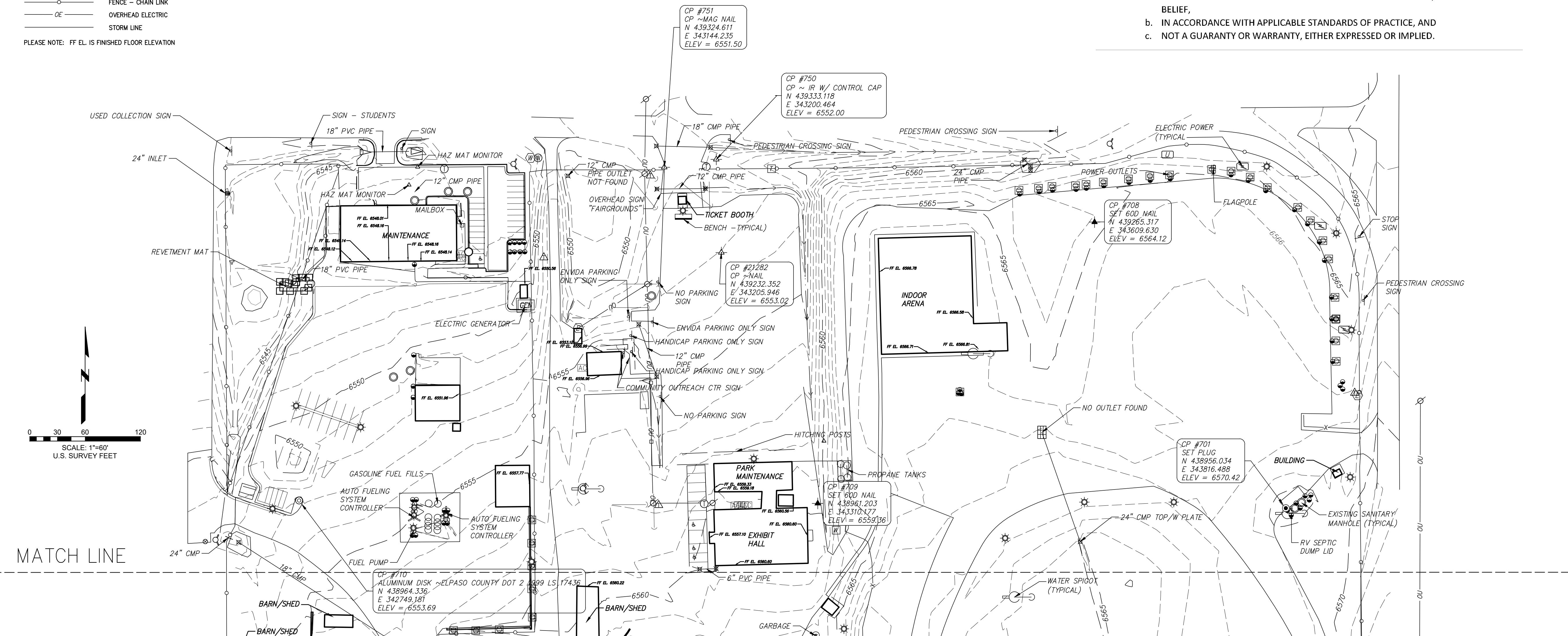
LEGEND

- ▲ CONTROL POINT
- BOLLARD
- ⊕ COMMUNICATIONS MANHOLE
- ⊖ COMMUNICATIONS POLE
- ⊙ COMMUNICATIONS PEDESTAL
- ⊛ ELECTRIC LIGHT
- ⊚ DOWN GUY
- ⊗ ELECTRIC POLE
- ⊘ ELECTRIC OH TENSION POLE
- ⊙ ELECTRIC GUY POLE
- ⊚ ELECTRIC METER
- ⊙ ELECTRIC OUTLET
- ⊚ ELECTRIC SWITCH
- ⊗ ELECTRIC TRANSFORMER
- ⊙ GAS METER
- ⊚ GAS VALVE
- ⊙ SANITARY SEWER MANHOLE
- ⊕ STORM CATCH BASIN
- ⊙ STORM CURB INLET
- ⊙ STORM INLET
- ⊙ STORM MANHOLE
- ⊙ FIRE HYDRANT
- ⊙ WATER MANHOLE
- ⊙ WATER METER
- ⊙ WATER SPRINKLER CONTROL
- ⊙ WATER WELL

PROJECT CONTROL INFORMATION

POINT #	NORTHING (US feet)	EASTING (US feet)	ELEVATION (US feet)	LATITUDE (WGS 84)	LONGITUDE (WGS 84)	ELLIPSOID HEIGHT (US feet)	DESCRIPTION
19 JH	437,346.87	343,961.93	6601.37	N39°01'35.25089"	W104°17'36.99452"	6540.58	NGS PID NUMBER AE4284
701	438,956.03	343,816.49	6570.42	N39°01'51.16853"	W104°17'38.56620"	6509.64	BRASS PLUG
702	437,778.87	343,266.97	6580.87	N39°01'39.61008"	W104°17'45.72471"	6520.09	FARNSWORTH RPC CONTROL
703	438,734.89	342,680.13	6555.34	N39°01'49.13243"	W104°17'52.99788"	6494.59	FARNSWORTH RPC CONTROL
750	439,333.12	343,200.46	6552.00				FARNSWORTH RPC CONTROL
751	439,324.61	343,144.24	6551.50				MAG NAIL

- BUILDING LINE
 - X- FENCE - WIRE
 - O- FENCE - CHAIN LINK
 - OE- OVERHEAD ELECTRIC
 - STORM LINE
- PLEASE NOTE: FF EL. IS FINISHED FLOOR ELEVATION



Farnsworth GROUP

4755 FORGE ROAD, SUITE 150
 COLORADO SPRINGS, COLORADO 80907
 (719) 590-9194 / info@f-w.com

www.f-w.com
 Engineers | Architects | Surveyors | Scientists

ISSUE:
 # DATE: DESCRIPTION:

EL PASO COUNTY FAIRGROUND

Project Status

PROJECT:

EL PASO COUNTY TOPOGRAPHIC SURVEY

DATE: 12/12/2019
 DESIGNED: LAW
 DRAWN: CDO
 REVIEWED: LAW
 FIELD BOOK NO.: N/A

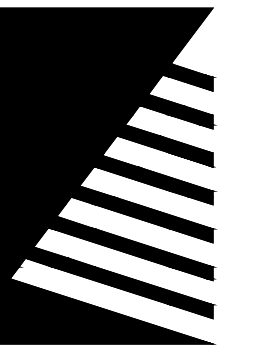
EL PASO COUNTY FAIRGROUNDS SITE DRAWING

SHEET NUMBER:

1 OF 3

PROJECT NO.: 0170999.04

I:\DLSN\14_2017\0170999.04 - EPC Fairgrounds\Survey\07_Drawings\A_V SITE_0170999.04.dwg | 1/10/2020, 2:50 PM |



Farnsworth GROUP

4755 FORGE ROAD, SUITE 150
COLORADO SPRINGS, COLORADO 80907
(719) 590-9194 / info@f-w.com

www.f-w.com
Engineers | Architects | Surveyors | Scientists

ISSUE:
DATE: DESCRIPTION:

EL PASO COUNTY FAIRGROUND

Project Status

PROJECT:

EL PASO COUNTY TOPOGRAPHIC SURVEY

DATE: 12/12/2019
DESIGNED: LAW
DRAWN: CDO
REVIEWED: LAW
FIELD BOOK NO.: N/A

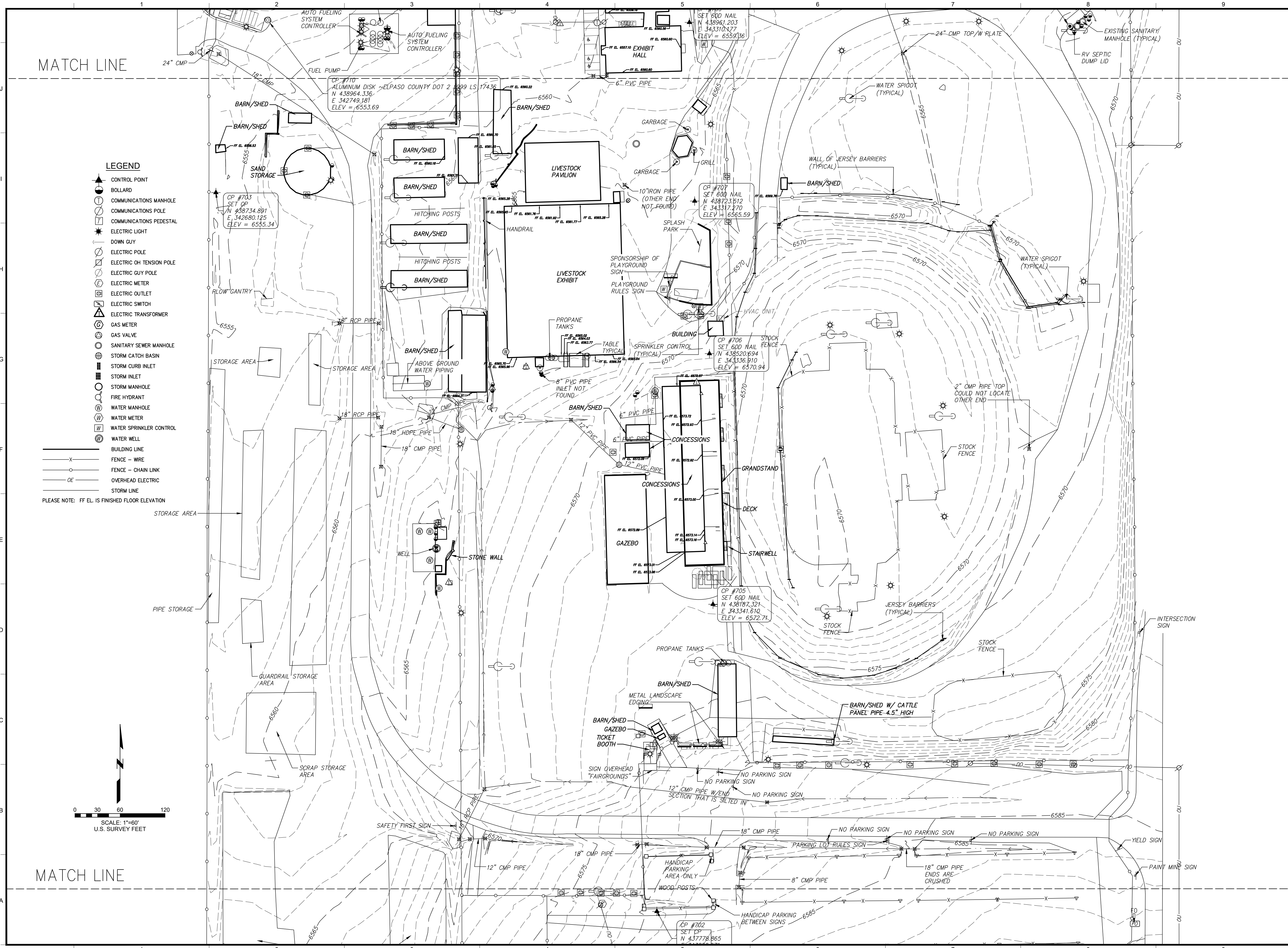
EL PASO COUNTY FAIRGROUND SITE DRAWING

SHEET NUMBER:

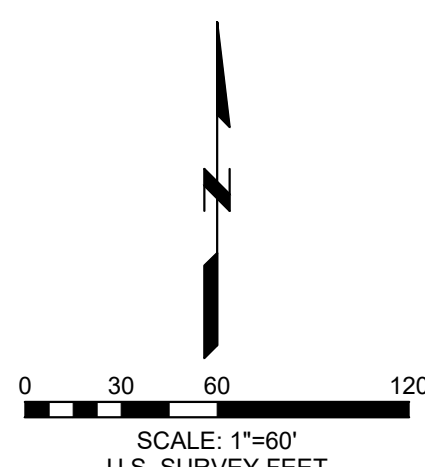
2 OF 3

2

PROJECT NO.: 0170999.04



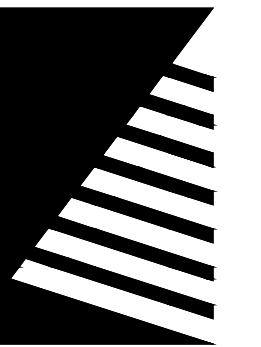
- LEGEND**
- ▲ CONTROL POINT
 - BOLLARD
 - COMMUNICATIONS MANHOLE
 - COMMUNICATIONS POLE
 - COMMUNICATIONS PEDESTAL
 - ★ ELECTRIC LIGHT
 - ⊖ DOWN GUY
 - ⊖ ELECTRIC POLE
 - ⊖ ELECTRIC OH TENSION POLE
 - ⊖ ELECTRIC GUY POLE
 - ⊖ ELECTRIC METER
 - ⊖ ELECTRIC OUTLET
 - ⊖ ELECTRIC SWITCH
 - ⊖ ELECTRIC TRANSFORMER
 - ⊖ GAS METER
 - ⊖ GAS VALVE
 - SANITARY SEWER MANHOLE
 - STORM CATCH BASIN
 - STORM CURB INLET
 - STORM INLET
 - STORM MANHOLE
 - FIRE HYDRANT
 - WATER MANHOLE
 - WATER METER
 - WATER SPRINKLER CONTROL
 - WATER WELL
 - BUILDING LINE
 - FENCE - WIRE
 - FENCE - CHAIN LINK
 - OVERHEAD ELECTRIC
 - STORM LINE
- PLEASE NOTE: FF EL. IS FINISHED FLOOR ELEVATION



MATCH LINE

MATCH LINE

I:\DLS\N | J:\2017\0170999.04 - EPC Fairground\Survey\07_Drawings\A_V_Site_0170999.04.dwg | 1/10/2020, 2:50 PM |



Farnsworth GROUP

4755 FORGE ROAD, SUITE 150
COLORADO SPRINGS, COLORADO 80907
(719) 590-9194 / info@f-w.com

www.f-w.com
Engineers | Architects | Surveyors | Scientists

ISSUE:
DATE: DESCRIPTION:

EL PASO COUNTY FAIRGROUND

Project Status

PROJECT:

EL PASO COUNTY TOPOGRAPHIC SURVEY

DATE: 12/12/2019
DESIGNED: LAW
DRAWN: CDO
REVIEWED: LAW
FIELD BOOK NO.: N/A

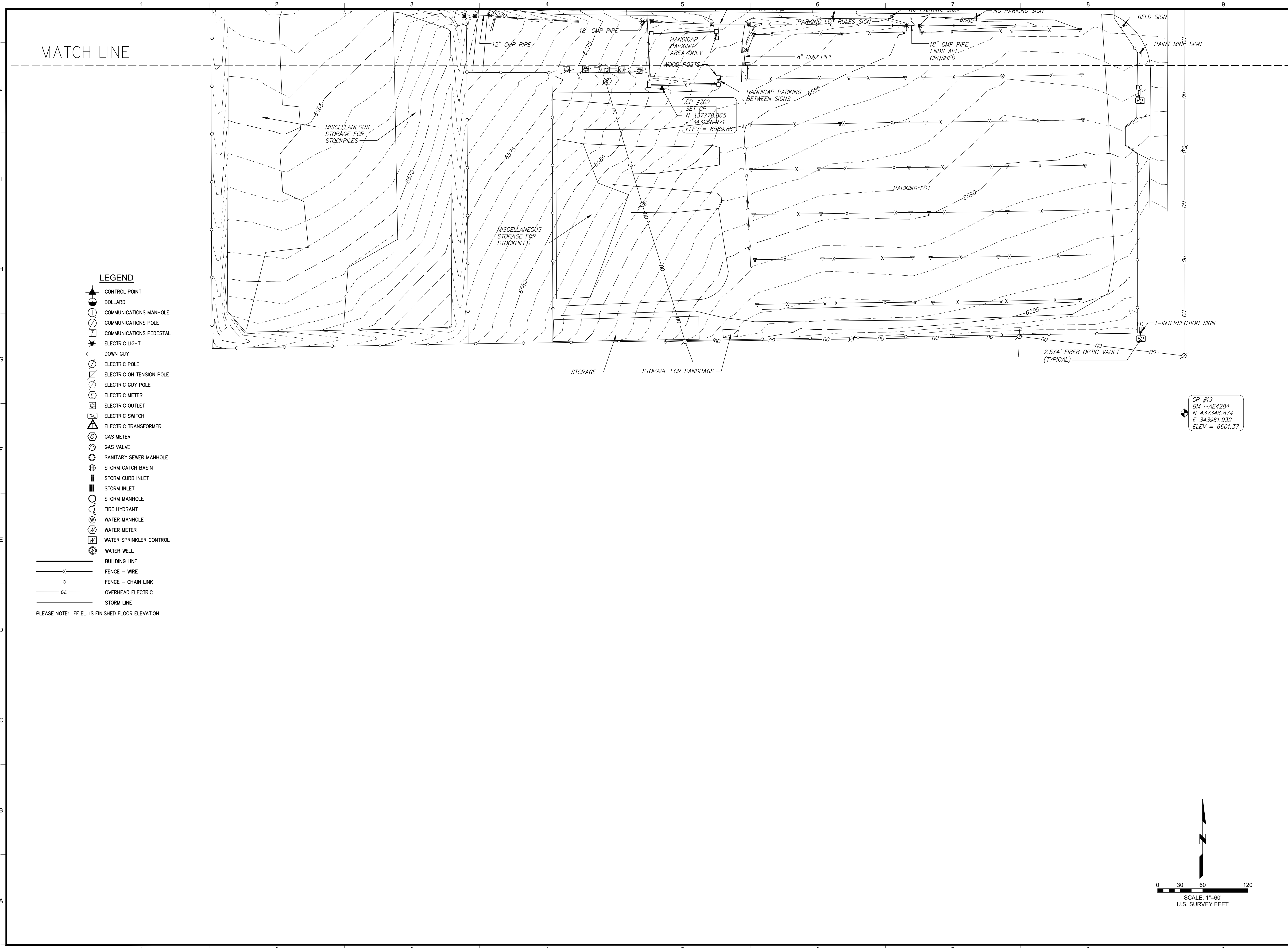
EL PASO COUNTY FAIRGROUND SITE DRAWING

SHEET NUMBER:

3 OF 3

3

PROJECT NO.: 0170999.04



MATCH LINE

LEGEND

- CONTROL POINT
- BOLLARD
- COMMUNICATIONS MANHOLE
- COMMUNICATIONS POLE
- COMMUNICATIONS PEDESTAL
- ELECTRIC LIGHT
- DOWN GUY
- ELECTRIC POLE
- ELECTRIC OH TENSION POLE
- ELECTRIC GUY POLE
- ELECTRIC METER
- ELECTRIC OUTLET
- ELECTRIC SWITCH
- ELECTRIC TRANSFORMER
- GAS METER
- GAS VALVE
- SANITARY SEWER MANHOLE
- STORM CATCH BASIN
- STORM CURB INLET
- STORM INLET
- STORM MANHOLE
- FIRE HYDRANT
- WATER MANHOLE
- WATER METER
- WATER SPRINKLER CONTROL
- WATER WELL
- BUILDING LINE
- FENCE - WIRE
- FENCE - CHAIN LINK
- OVERHEAD ELECTRIC
- STORM LINE

PLEASE NOTE: FF EL. IS FINISHED FLOOR ELEVATION

CP #19
BM --AE4284
N 437346.874
E 343961.932
ELEV = 6601.37

CP #702
SET DP
N 437778.865
E 343266.971
ELEV = 6580.86

SCALE: 1"=60'
U.S. SURVEY FEET

I:\DLSN\14_2017\0170999.04 - EPC Fairground\Survey\07_Drawings\A_V SITE_0170999.04.dwg | 1/10/2020, 2:50 PM |