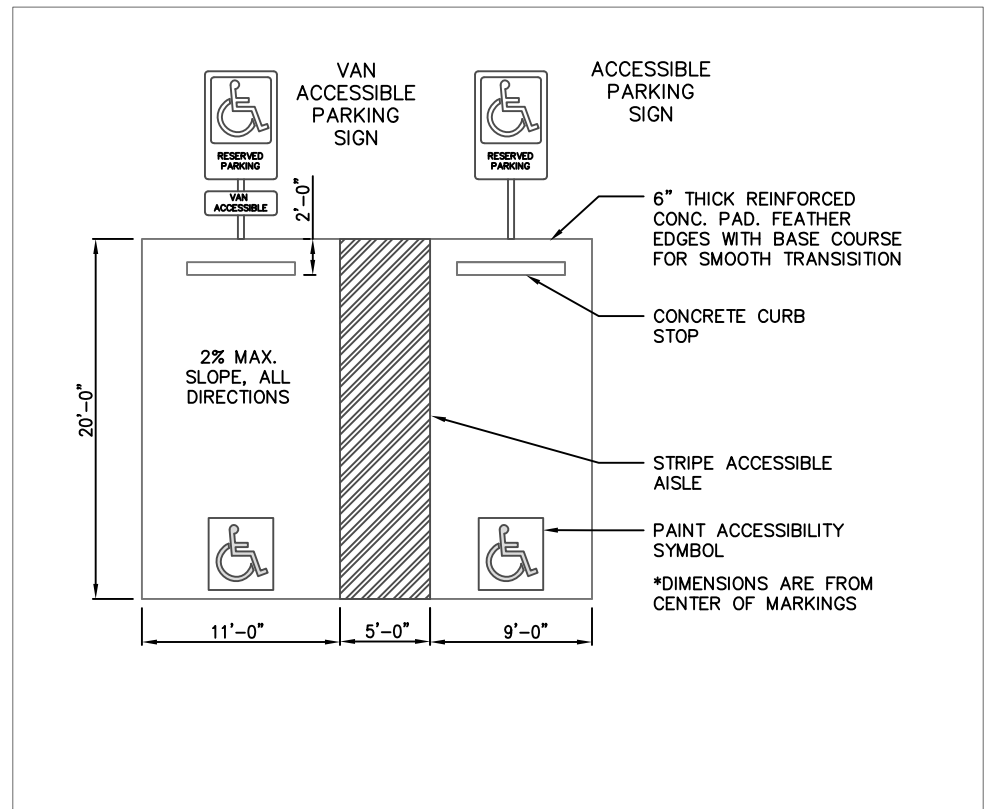


1 DEMOLITION PLAN
 SCALE: 1" = 20'-0"



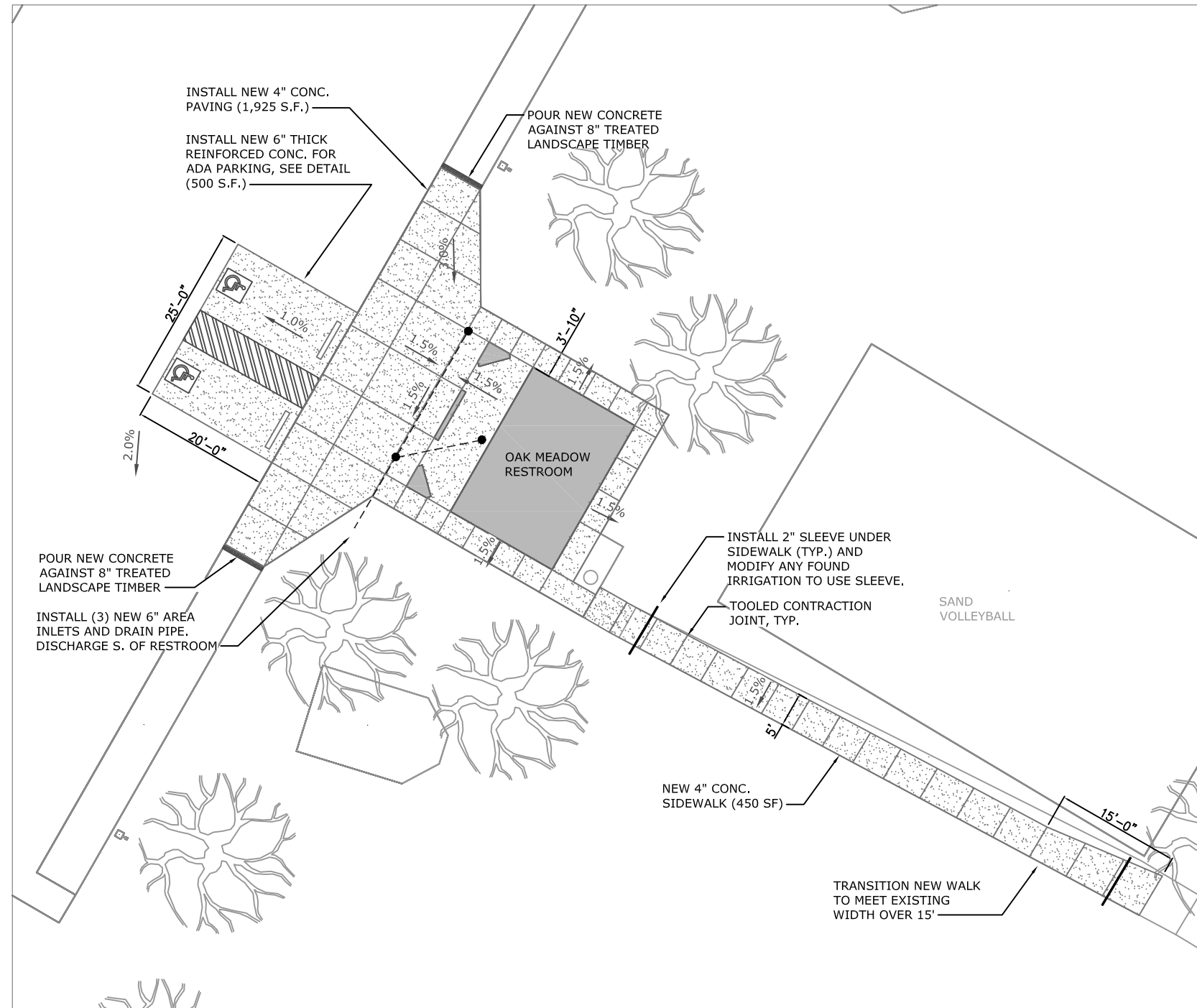
2 ADA PARKING DETAIL
 SCALE: 3/32" = 1'-0"

***This plan is schematic and not for construction.**

***Quantities provided for information purposes only. Contractor responsible for verifying quantities.**

***All new work shall comply with latest ADA.**

***Coordinate with County for customer owned utilities**



3 OAK MEADOWS SITE PLAN
 SCALE: 1" = 20'-0"

Revisions	By

El Paso County Parks
 2002 CREEK CROSSING
 COLORADO SPRINGS, CO 80905

FOX RUN RESTROOM RENOVATION
 2110 STELLA DRIVE
 EL PASO COUNTY, COLORADO
 EL PASO COUNTY PARKS

DRAWN BY: GJS
 DATE: 10-20-2022
 SCALE: AS SHOWN
 RFQ# 22-XXX
 SHEET NO:
C-1

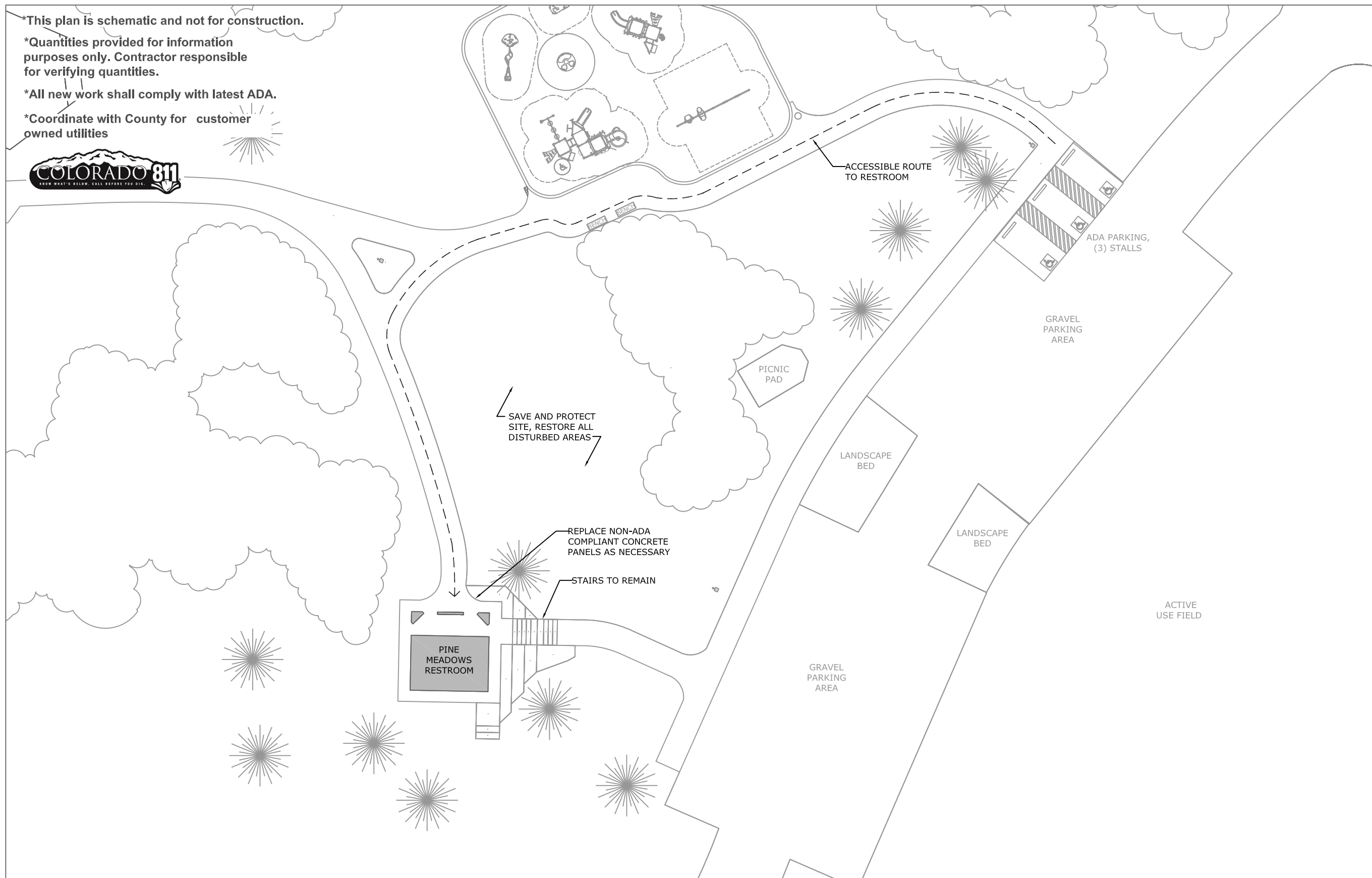


*This plan is schematic and not for construction.

*Quantities provided for information purposes only. Contractor responsible for verifying quantities.

*All new work shall comply with latest ADA.

*Coordinate with County for customer owned utilities



Revisions	By

El Paso County Parks
 2002 CREEK CROSSING
 COLORADO SPRINGS, CO 80905

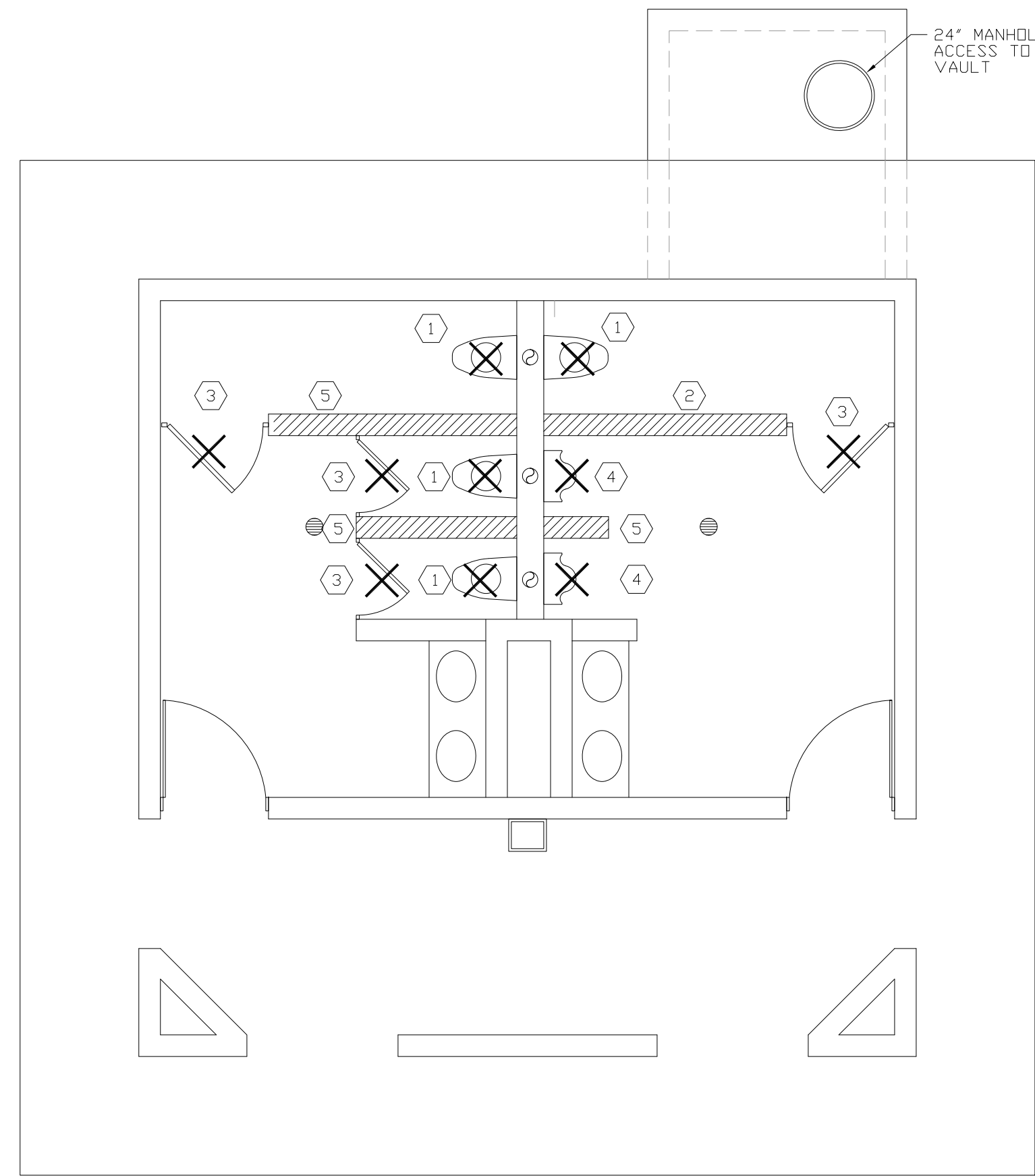


FOX RUN RESTROOM RENOVATION
 2110 STELLA DRIVE
 EL PASO COUNTY, COLORADO
 EL PASO COUNTY PARKS

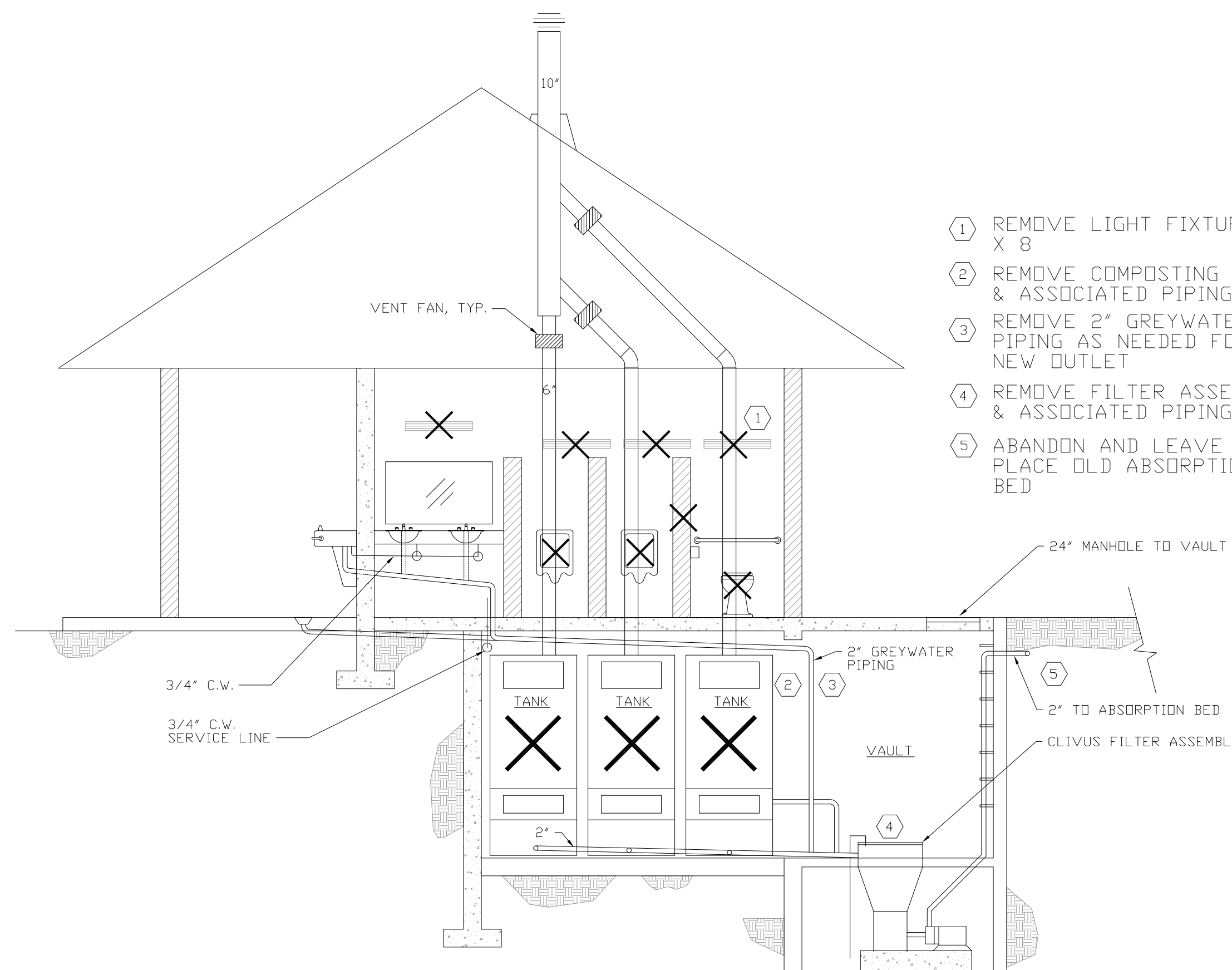
DRAWN BY: GJS
 DATE: 10-20-2022
 SCALE: AS SHOWN
 RFQ# 22-XXX

SHEET NO:
C-2

***This plan is schematic and not for construction.**
***All new work shall comply with latest ADA.**



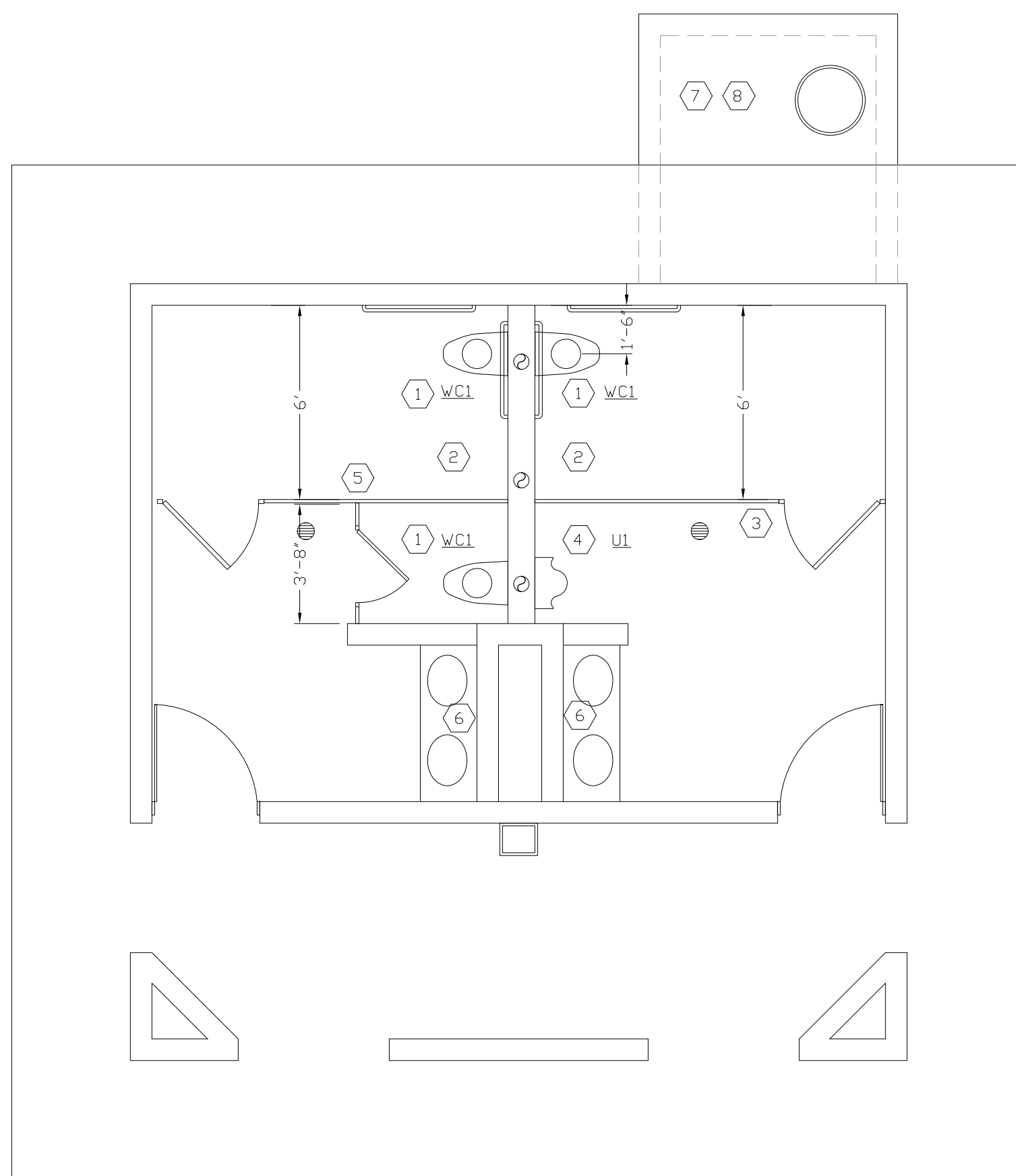
- ① REMOVE TOILET, GRAB BARS & TP DISPENSER
- ② REMOVE 6' HIGH CMU WALL
- ③ REMOVE DOOR
- ④ REMOVE URINAL
- ⑤ REMOVE 6' HIGH CMU WALL



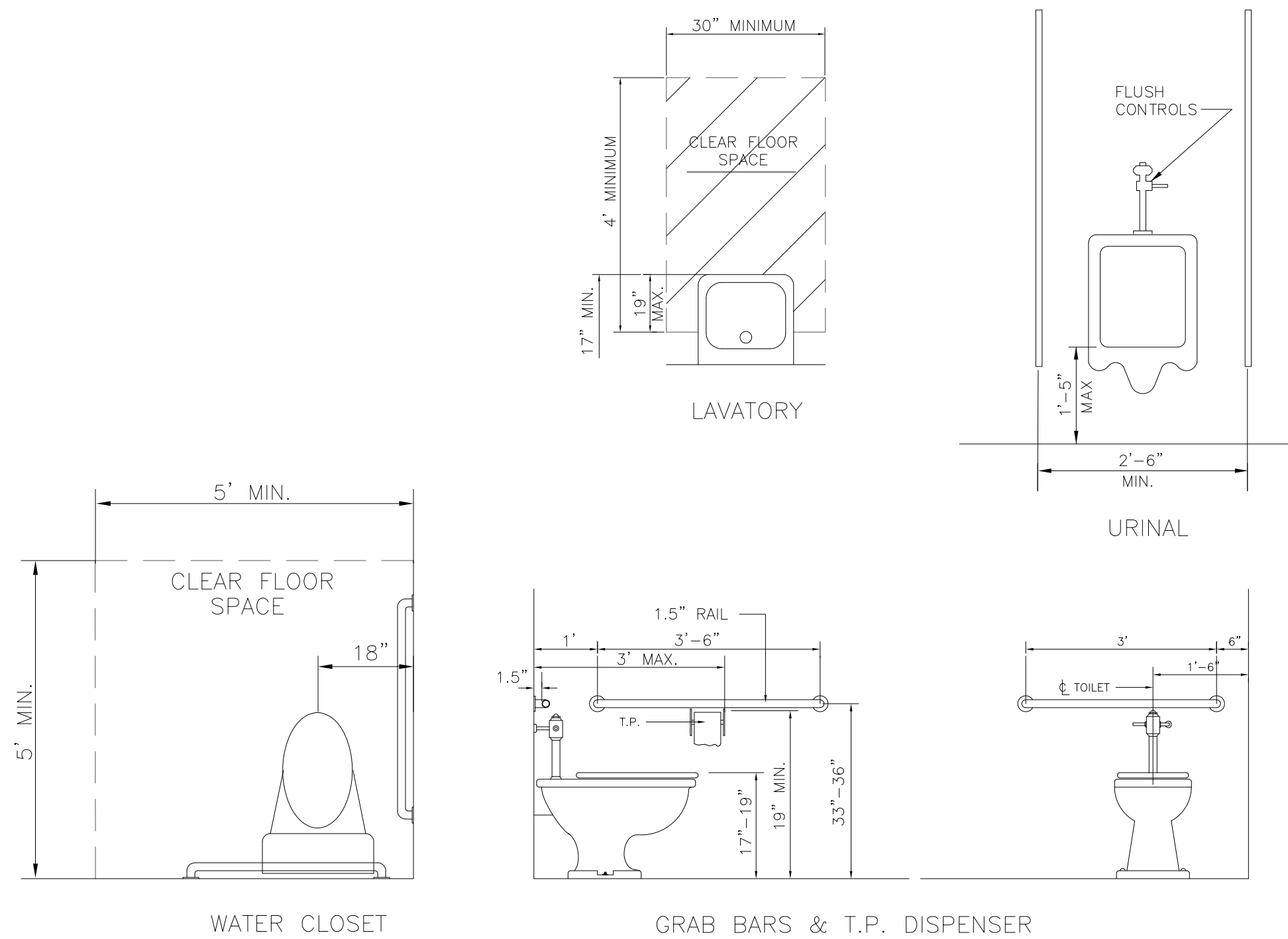
- ① REMOVE LIGHT FIXTURES X 8
- ② REMOVE COMPOSTING TANKS & ASSOCIATED PIPING
- ③ REMOVE 2" GREYWATER PIPING AS NEEDED FOR NEW OUTLET
- ④ REMOVE FILTER ASSEMBLY & ASSOCIATED PIPING
- ⑤ ABANDON AND LEAVE IN PLACE OLD ABSORPTION BED

1
A-1 **DEMOLITION PLAN**
scale: 1/4" = 1'-0"

2
A-1 **DEMOLITION PLAN - SECTION**
scale: 1/4" = 1'-0"



- ① INSTALL NEW ADA ACCESSIBLE TOILET WITH FLUSH SENSOR, ADA COMPLIANT GRAB BARS, TP DISPENSER
- ② PAINT AND PATCH INTERIOR WALLS AS NECESSARY. REPAIR CONCRETE FLOOR WHERE CLIVUS UNITS HAVE BEEN REMOVED.
- ③ INSTALL NEW 5'-10" HIGH POWDER COATED METAL PARTITION, COLOR ALMOND AND 36" OUTSWING ADA DOOR.
- ④ INSTALL NEW URINAL WITH FLUSH SENSOR.
- ⑤ INSTALL NEW 5'-10" HIGH POWDER COATED METAL PARTITION, COLOR ALMOND 36" OUTSWING ADA DOOR. 26" INSWING STANDARD DOOR.
- ⑥ INSTALL NEW VANDAL-RESISTANT LED LIGHT FIXTURES
- ⑦ INSTALL NEW WASTE AND VENT PIPING, AND WATER SUPPLY LINE FOR TOILET
- ⑧ INSTALL NEW HOT WATER HEATER IN VAULT & NEW PIPING TO FIXTURES SET WATER HEATER 18" MIN. AFF.



4
A-1 **ADA TOILET STANDARDS**
scale: 1/2" = 1'-0"

3
A-1 **PROPOSED PLAN**
scale: 1/4" = 1'-0"

Revisions	By

El Paso County Parks
 2002 CREEK CROSSING
 COLORADO SPRINGS, CO 80905



**OAK AND PINE MEADOWS
 RESTROOM RENOVATION PLAN**
 FOX RUN REGIONAL PARK

DRAWN BY: GJS
 DATE: 10-20-2022
 SCALE: AS SHOWN
 RFQ# 22-XXX

SHEET NO:
A-1