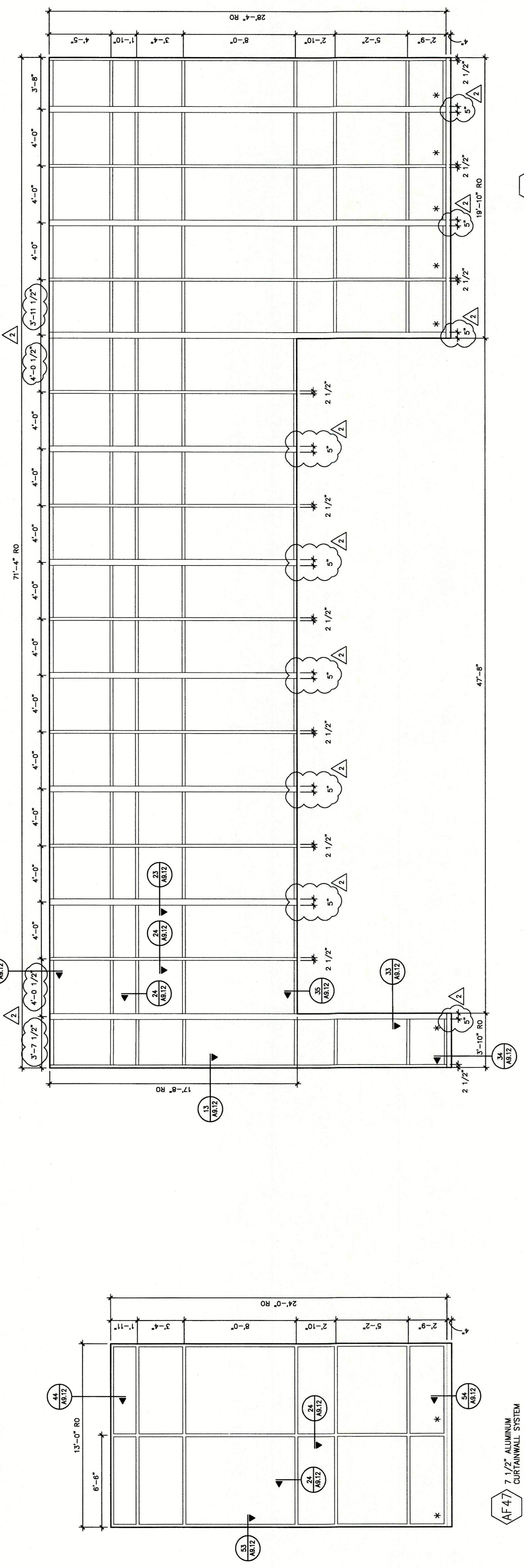
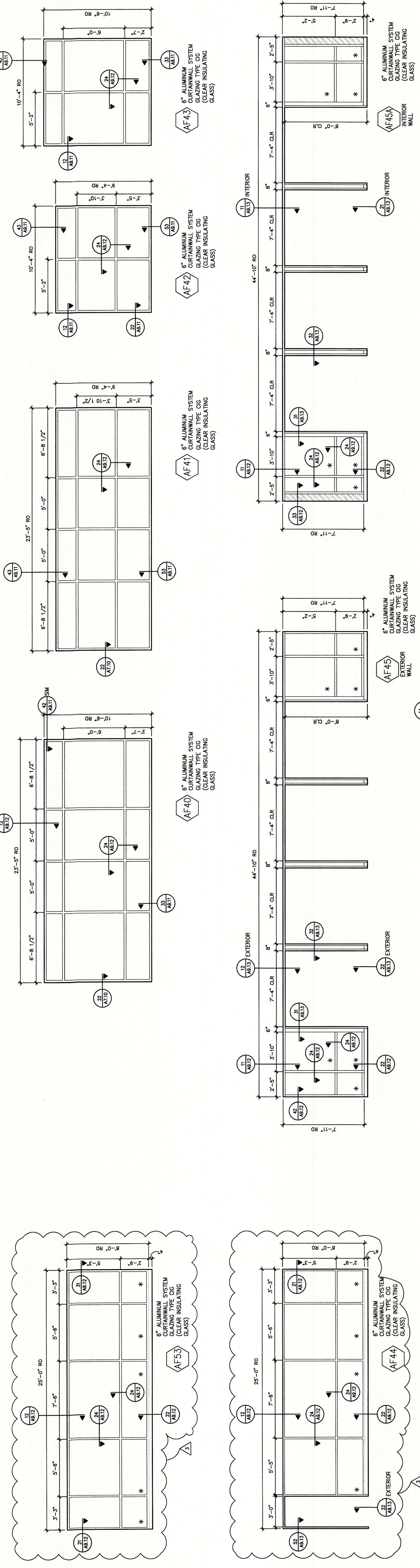
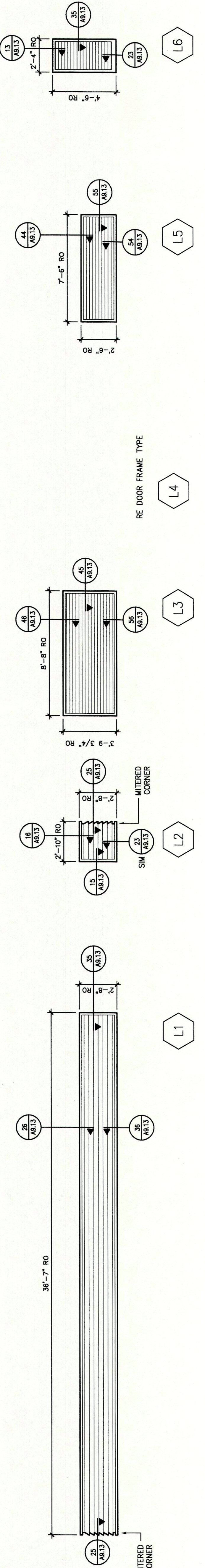


EXTERIOR WINDOW TYPES AND LOUVERS
El Paso County Judicial Building Addition & Renovation

CURTAINWALL TYPES



LOUVER TYPES



GENERAL NOTE:
 1. ALL GLAZING IS TYPE TIG (TINTED INSULATING GLASS), UNLESS NOTED OTHERWISE.
 2. ALL INSULATED, LOW-E VISION GLASS, UNLESS NOTED OTHERWISE.
 3. ALL WINDOWS ARE 4 1/2" ALUMINUM WINDOWS.
 4. ALL GLASS IS SAFETY GLASS (TIG, CTIG) ALL GLASS IN EXTERIOR WALLS SHALL BE SAFETY GLASS (TIG, CTIG) DEFINED AS HAZARDOUS PER 2003 IBC SECTION 2406. SHALL BE TEMPERED TO MEET THE REQUIREMENTS OF ANSI Z97.1-1984 AND ASTM CATEGORY 1 AND 2.
 5. ALL GLASS SHALL BE SAFETY GLASS (TIG, CTIG) CATEGORY 1 AND 2.

- LEGEND:**
- BLACK ANODIZED MULLION
 - ALUMINUM COMPOSITE FRAME
 - INTEGRATED WITH WINDOW SYSTEM
 - * GLASS PANE TO BE TEMPERED
 - * SAFETY GLASS (TIG, CTIG)

SCALE: 1/4" = 1'-0"