



Department of Public Works

North Gate Blvd / Struthers Rd Drainage & PWQ Pond - IFB 25-076

Pre-Bid Meeting – August 13, 2025 – 1:00 PM





## Project Team

Matthew Marter, CPPB

Procurement Specialist – Contracts and Procurement

[MatthewMarter@elpasoco.com](mailto:MatthewMarter@elpasoco.com) | 719.520.6663

John Lantz, P.E.

Senior Engineer – Department of Public Works

Project Manager

Thomas Donahue, P.E.

Senior Engineer – Department of Public Works

Construction Manager





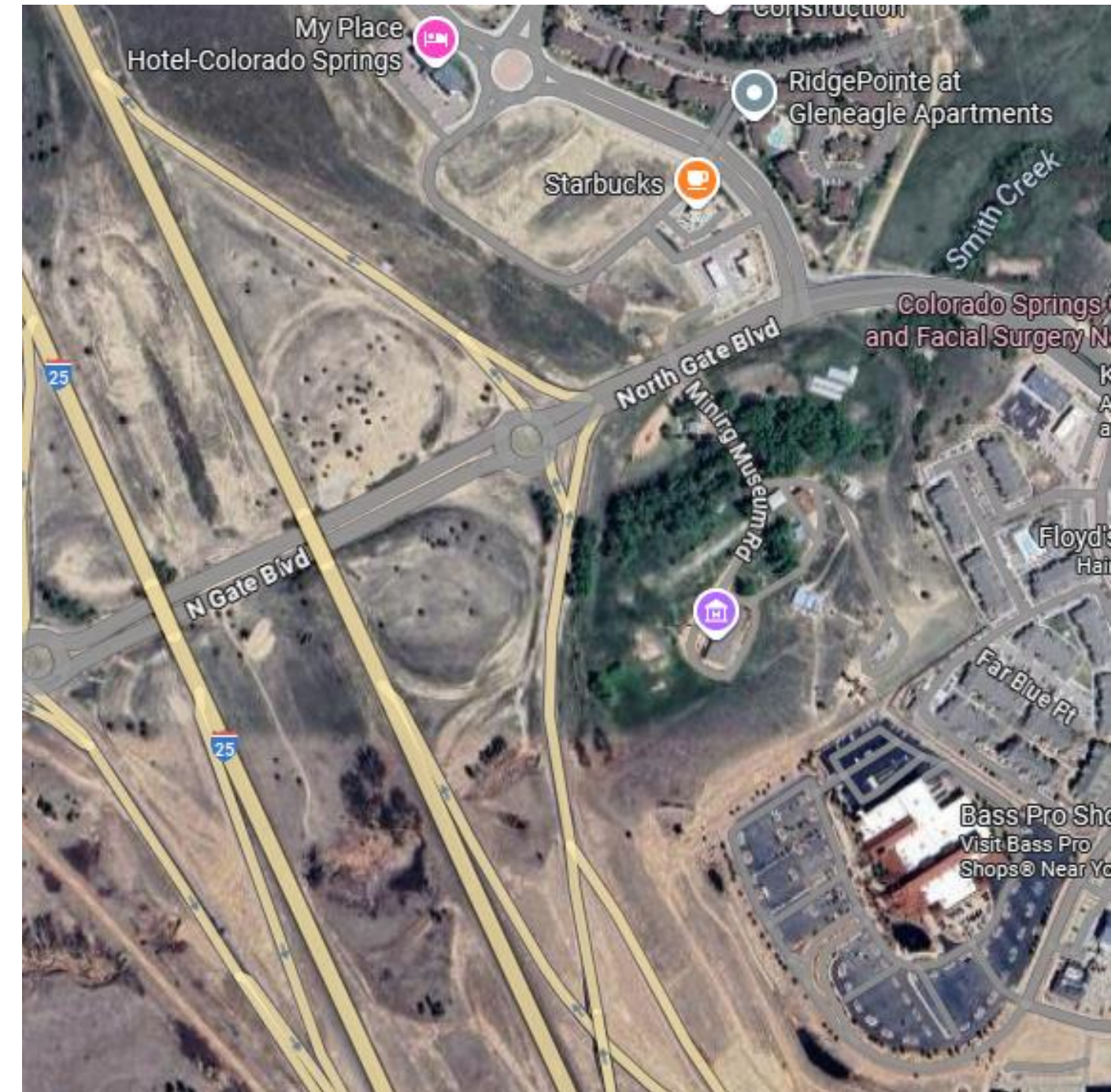
# Schedule

- IFB Release August 6, 2025
- Pre-Bid August 13, 2025 @ 1:00 pm
- Deadline for questions August 19, 2025 @ 10:00 am
- Response submission September 3, 2025 @ 2:00 pm
- Contract Award October 2025



# Background

- Project History
  - Project Origination
  - Struthers-Gleneagle Roundabout
  - Multi-Jurisdictional
- Funding Source
  - Federal/State – PWQ Funds
  - El Paso County
- Compliance
  - CDOT Oversight
    - Davis-Bacon Requirements
    - DBE – 2%
    - OJT – 500 hrs
  - El Paso Oversight
    - Internal Construction Management
    - RFQ Solicitation for Testing Services

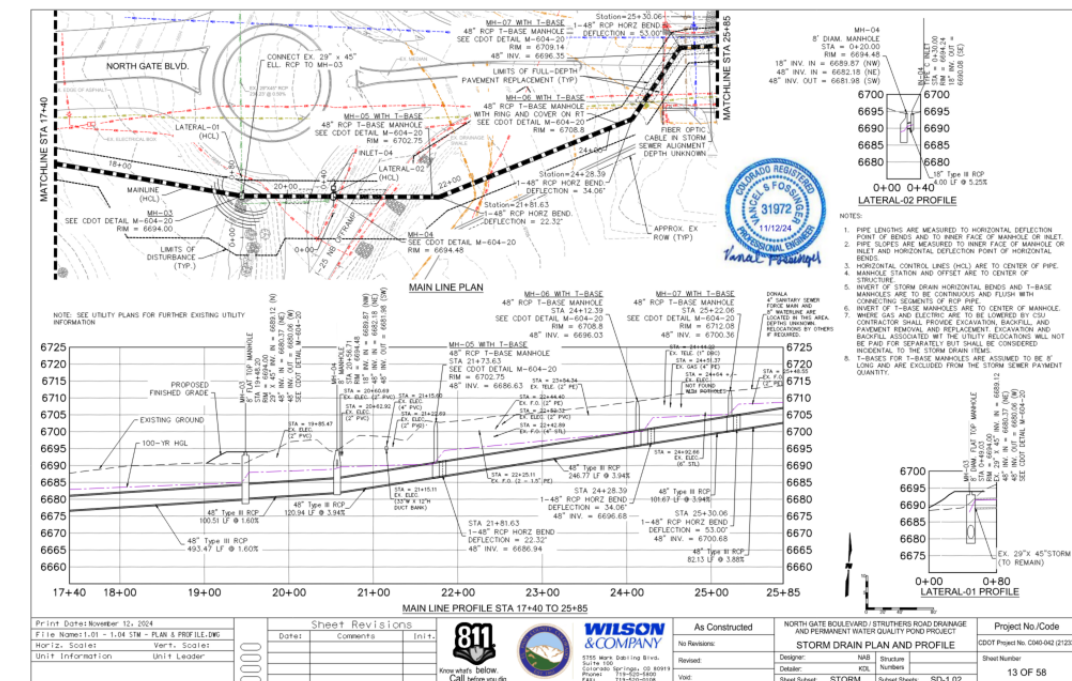
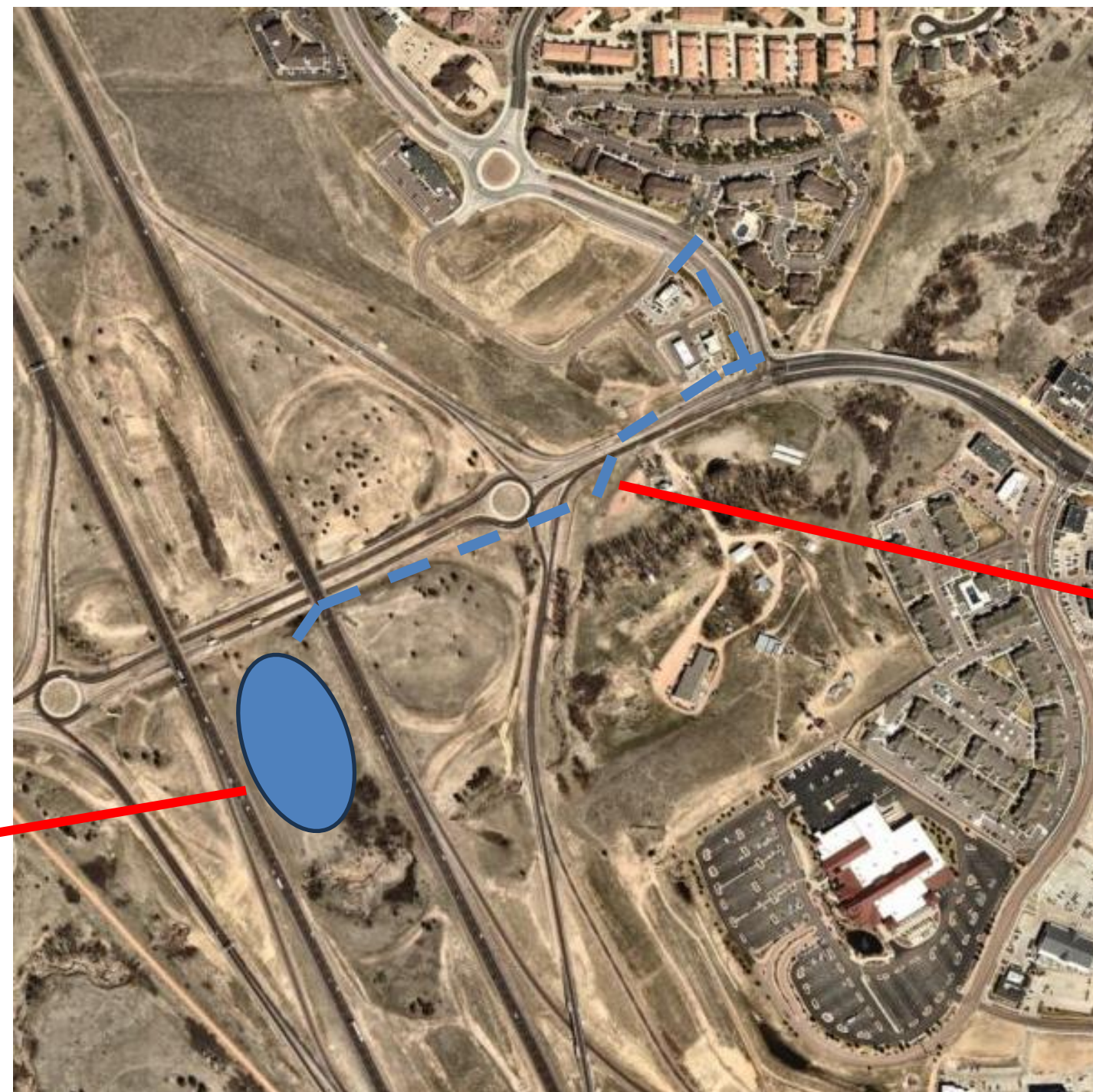
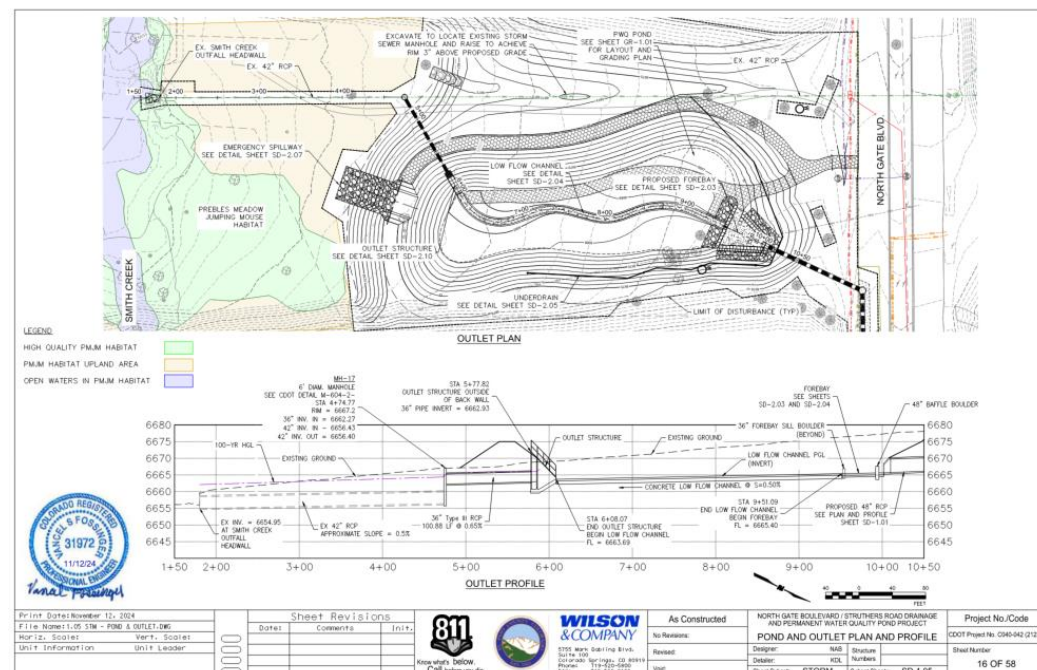






# Project Location

Colorado Springs, El Paso County, CO – *multi-jurisdictional area adjacent to Struthers Rd, North Gate Blvd & I-25*



Pond Site

Pipe Network





# Adjacent Projects

*USAFA/Developer*  
**True North Commons**



*El Paso County*  
**Asphalt Maintenance**

*City of Colorado  
Springs*  
**Mining Museum Entry  
& North Gate Upgrades**





# Project Scope/Details

- Storm Pipe Network Construction
  - Lane Closures
  - Crossings
  - Coordination with adjacent/overlapping work – EPC & City
- PWQ Pond Construction
  - Proximity to Smith Creek & PMJM Habitat
  - Blended Appearance
  - Existing 42 in. RCP (CDOT maintained)
  - Underdrain
- 120 Working Days



# Additional Highlights

- PWQ Pond Requirements
  - As-Constructed Survey – Section 208/625
- Environmental Requirements
  - Project Specials – Section 241
  - Environmental Assessment (EA) – FONSI/FONPA
  - Construction Activities o/a PMJM Habitat/Migratory Birds
  - Wildlife Biologist & Qualified Ecologist/Biologist
  - Landscape Establishment/Success Criteria (Contractor)
  - Annual Monitoring/Success Criteria (County)





# General Notes

- Required Permitting
  - Review the Specifications- Project Specials – Section 107
  - Erosion & Stormwater Quality Control Permit (ESQCP)
  - CDPHE
    - COR400000 Construction Stormwater Discharge Permit
    - Dewatering Permit
  - Construction General Permit & Storm Water Pollution Prevention Plan (SWPPP) – USAFA/EPA
  - Multi-Jurisdictional Access
    - No property acquisitions for this project/all work in ROWs***
      - El Paso County – Work in the ROW & Construction Activity Permits
      - City of Colorado Springs – Concrete & Excavation Permits
      - CDOT – Right of Way Use Permit
      - USAFA – License to Construct – County-obtained
- Traffic Control plans shall be prepared by the Contractor
  - Review by County Construction Management & Inspection group...and others
- Baseline schedule to be included in work





# Utilities

- Key Affected Providers (include but not limited to):
  - CSU Gas (underground gas) RELOCATION COMPLETE
  - CSU Electric (underground electric) RELOCATION COMPLETE
  - Mountain View Electric Association (underground electric) DURING CONSTRUCTION
  - Donala Water & Sanitation District DURING CONSTRUCTION
  - CSU Water (underground water)
  - Fiber (too many list) – reference Project Specials/SUE
- Contractor to coordinate with all utility companies as necessary
  - 811 coordination required
  - SUE Quality Level A-D included in Bid Set





# Project Timeline

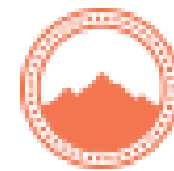
- Advertisement
  - August-September 2025
- Contract Award
  - October 2025
- Notice to Proceed
  - Mid-October 2024
- Pre-Construction Conference
  - Mid-October 2025
- Substantial Completion
  - Spring-Summer 2025





# Questions

Please submit all thru



**ROCKY MOUNTAIN**  
e-purchasing system

[www.bidnetdirect.com](http://www.bidnetdirect.com)

