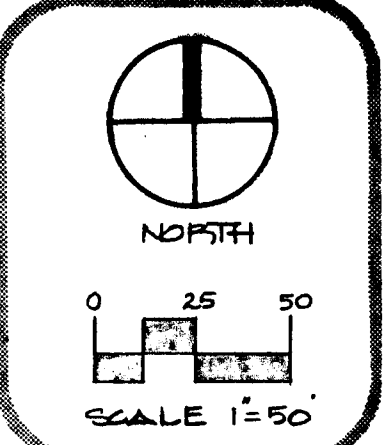
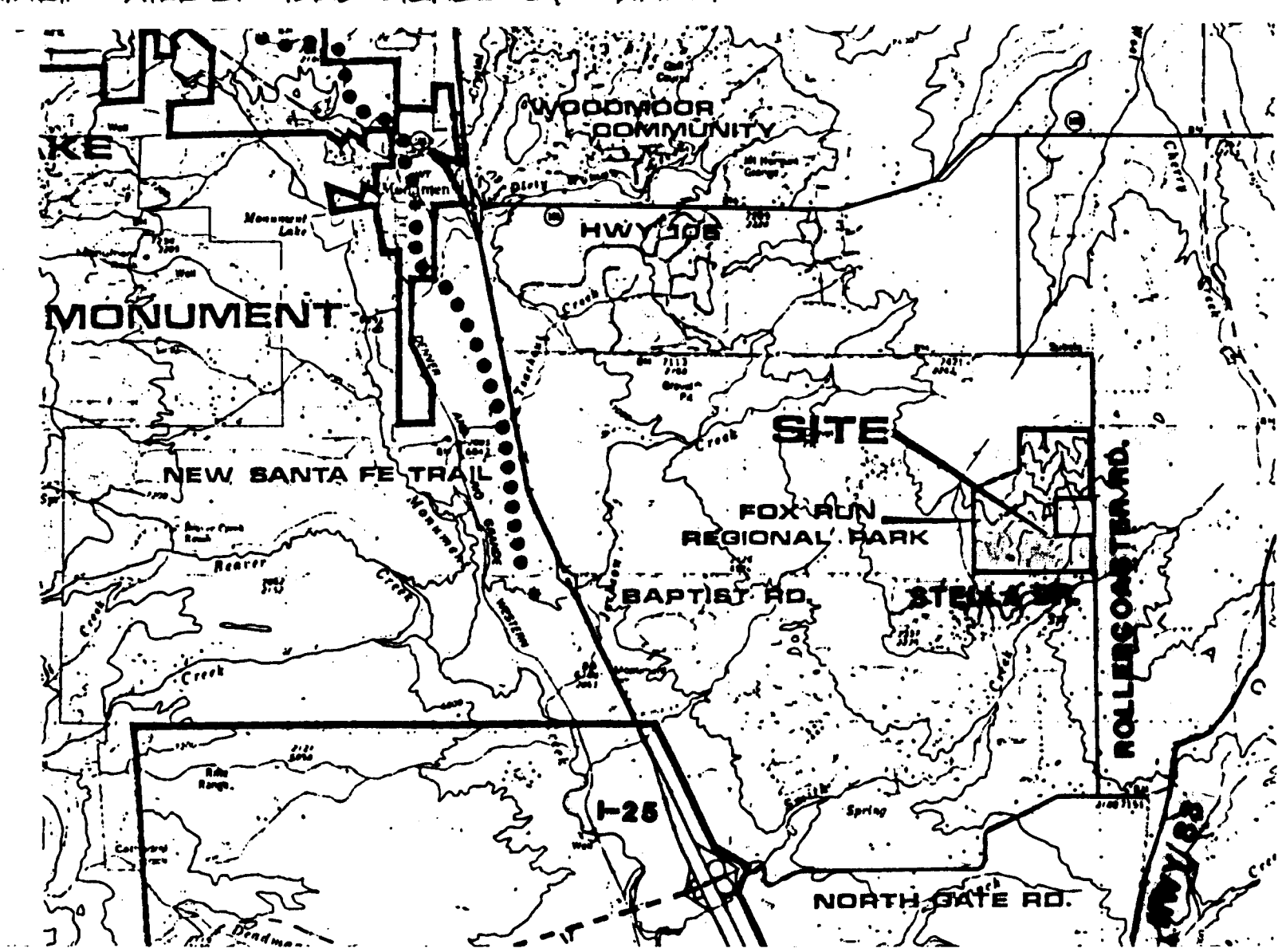


13 52 80 0629 032 IP MS
 Pk Fac Yr 10/07 Orgn 553 00J

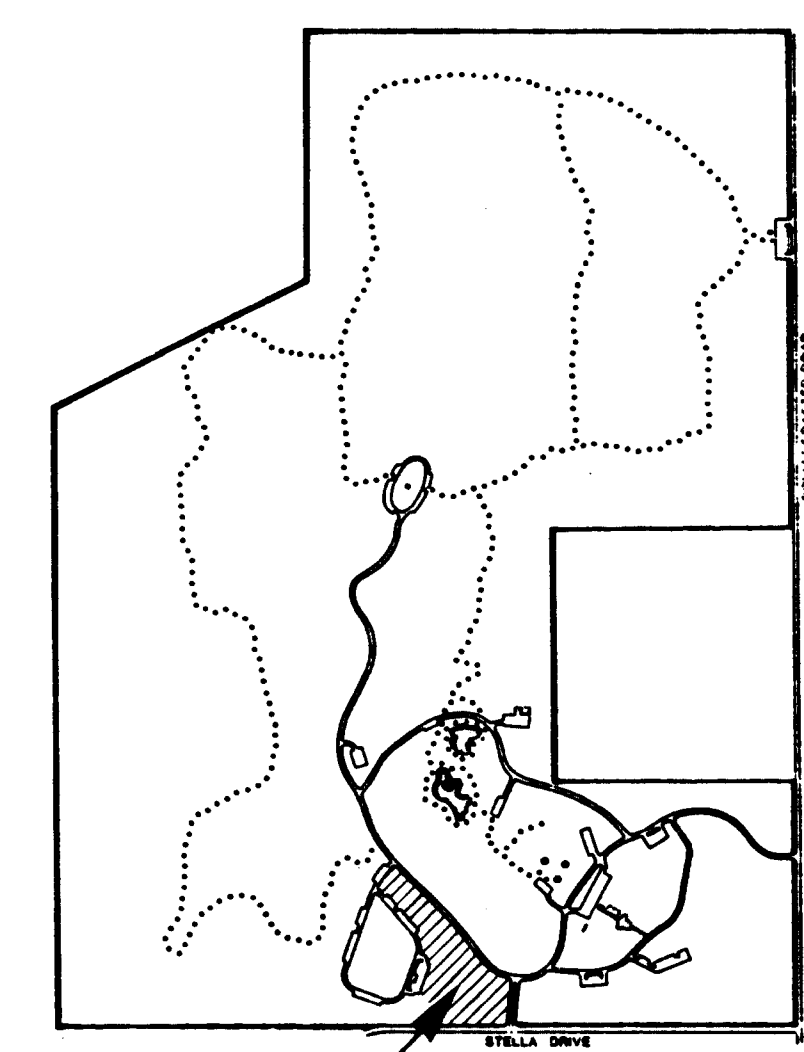


DESIGNED BY: JSE
 DRAWN BY: JSE
 APPROVAL: _____
 DATE: JUNE 29, 1988

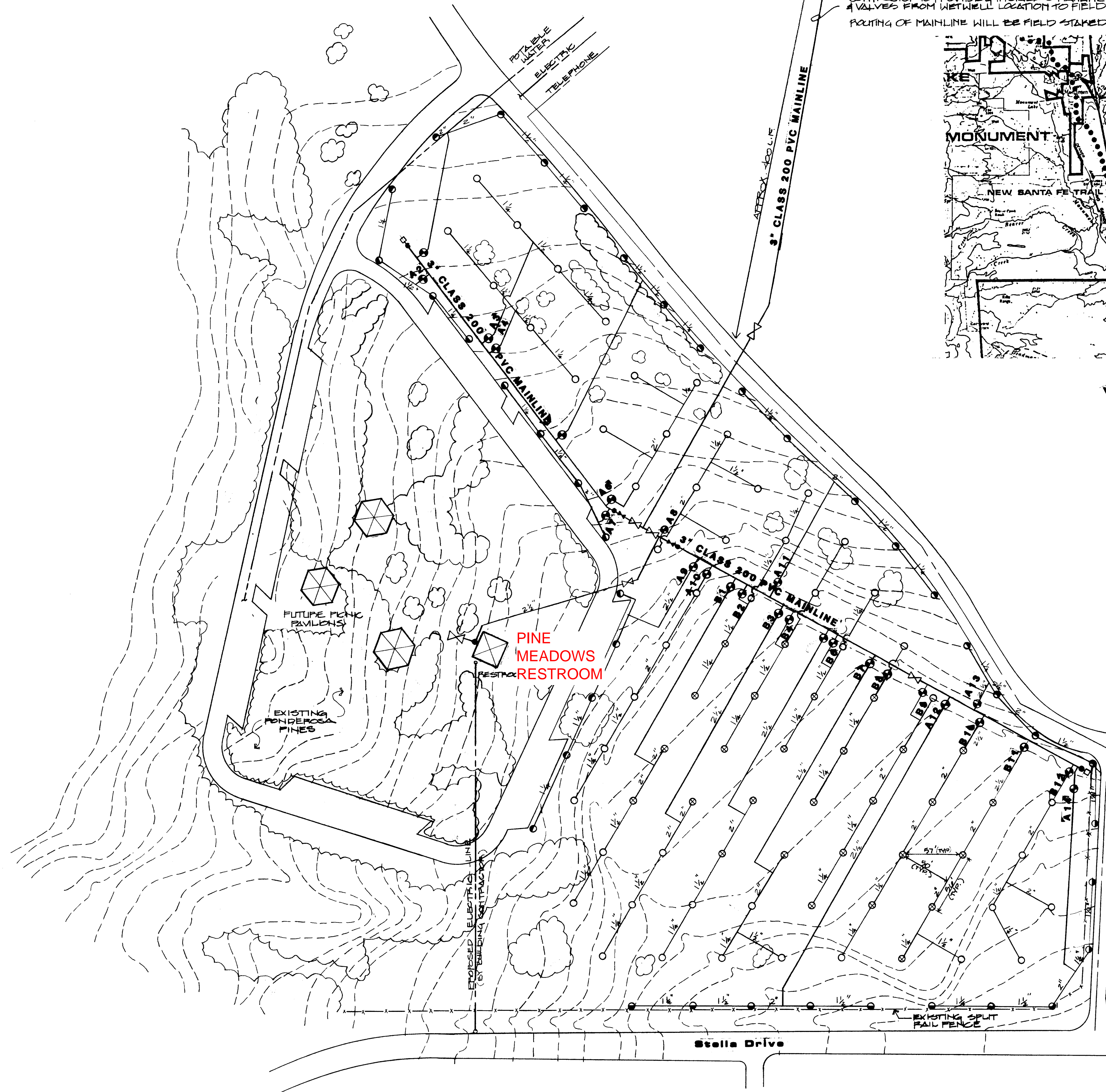
TO WETWELL AND PUMP LOCATION
 CONTRACTOR TO PROVIDE & INSTALL 3" MAINLINE & VALVES FROM WETWELL LOCATION TO FIELD AREA.
 ROUTING OF MAINLINE WILL BE FIELD STAKED BY OWNER.



Vicinity Map



Park Map



Estimated Qty

28
48
37
3
26
2
5
7
2

Legend

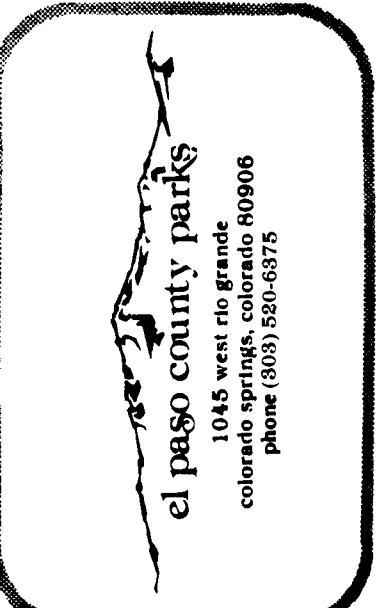
⊗	TORO 640 SERIES SPRINKLERS	644-02-42 WITH 640-01
○	TORO 640 SERIES SPRINKLERS	644-02-42
○	TORO 640 SERIES SPRINKLERS	642-02-42
○	TORO 640 SERIES SPRINKLERS	641-02-42
○	TORO 216 SERIES BRASS VALVES	216-26-10; 2 1/2" ELEC.
□	1 1/2" MANUAL DRAIN VALVE	
□	QUICK COUPLER VALVE	470 SERIES (DRL-LUG)
□	3" BRASS GATE VALVE	
□	PRESSURE REGULATING VALVE	216-27-10; 2 1/2" ELEC.
□	TORO CONTROLLERS	140-06-12; 12 STATION (1)
□	H 300 SERIES	140-06-18; 18 STATION (1)

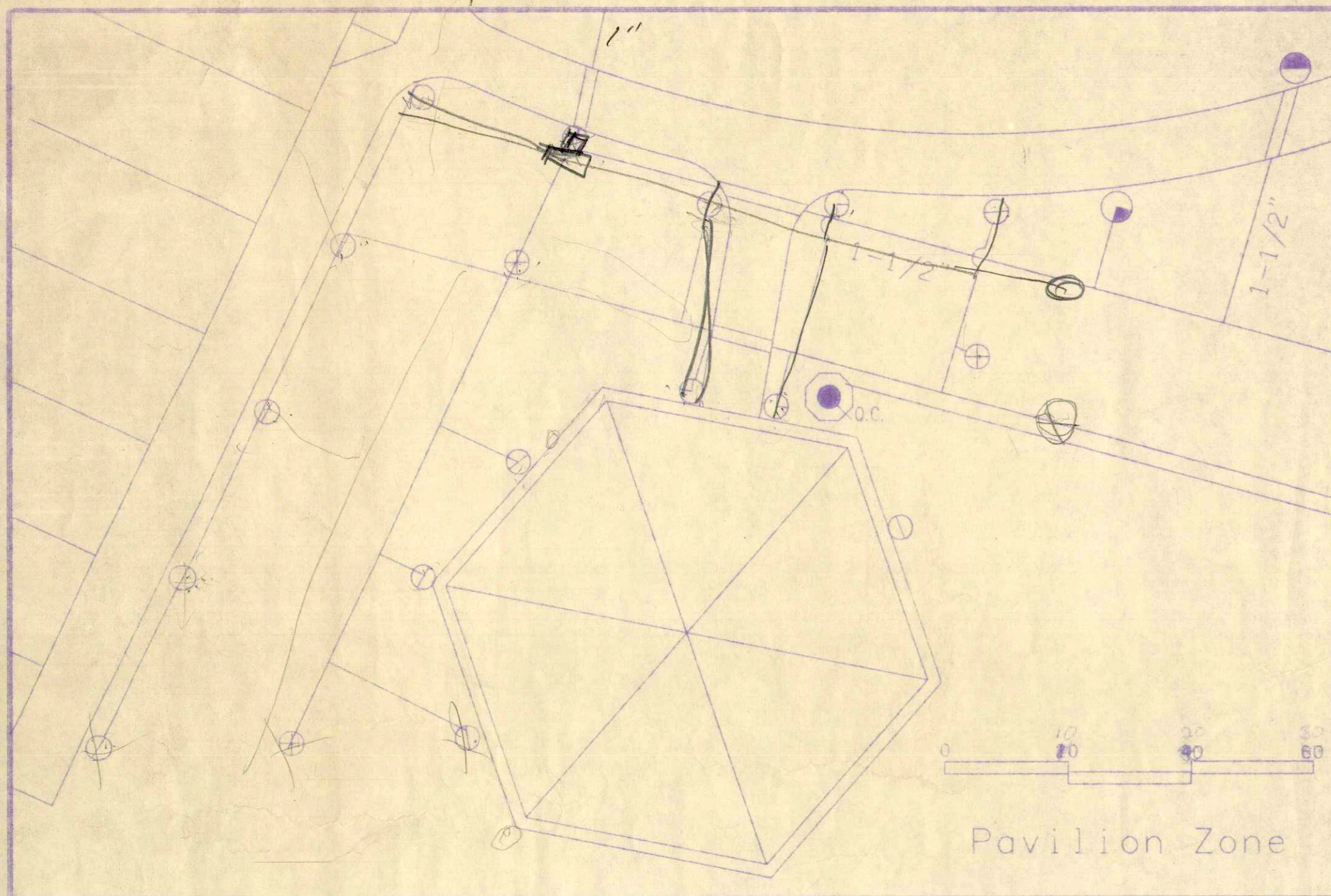
Irrigation Notes

1. THIS DESIGN IS BASED UPON A STATIC PRESSURE OF 82 PSI AND 70 GPM.
2. THIS IS A SCHEMATIC DESIGN AND ACTUAL FIELD LOCATIONS WILL BE STAKED BY THE CONTRACTOR AND APPROVED BY THE OWNER.
3. UTILITY LOCATIONS ARE APPROXIMATE, ACTUAL LOCATIONS ARE THE RESPONSIBILITY OF THE CONTRACTOR.
4. THE IRRIGATION CONTROLLERS ARE TO BE INSTALLED IN THE BASEMENT OF THE RESTROOM BUILDING. IF THE RESTROOM CONSTRUCTION IS NOT COMPLETED WHEN THE IRRIGATION IS SUBSTANTIALLY COMPLETE, THE CONTRACTOR SHALL COORDINATE WITH THE BUILDING CONTRACTOR FOR A TEMPORARY SERVICE. PERMANENT INSTALLATION MAY BE NECESSARY AT A LATER DATE.
5. THE CONTRACTOR SHALL PROVIDE 2 VALVE KEYS TO THE OWNER.
6. VALVE BOXES AND SPRINKLER HEADS SHALL BE SET 1" ABOVE FINISH GRADE.
7. SUBSTITUTION REQUESTS SHALL BE SUBMITTED IN WRITING FOR EVALUATION OF "EQUAL STATUS" BY THE OWNER.
8. THRUST BLOCKS TO BE INSTALLED ON THE MAIN LINE AT EVERY CHANGE OF DIRECTION.
9. ALL PVC MAINLINE SHALL BE CLASS 200-3". ALL PVC LATERAL LINES SHALL BE CLASS 100.

*Plan shows general locations.
 Actual locations to be field verified

DRAWING
FOX RUN REGIONAL PARK
PINE MEADOWS
IRRIGATION LAYOUT PLAN
I-1

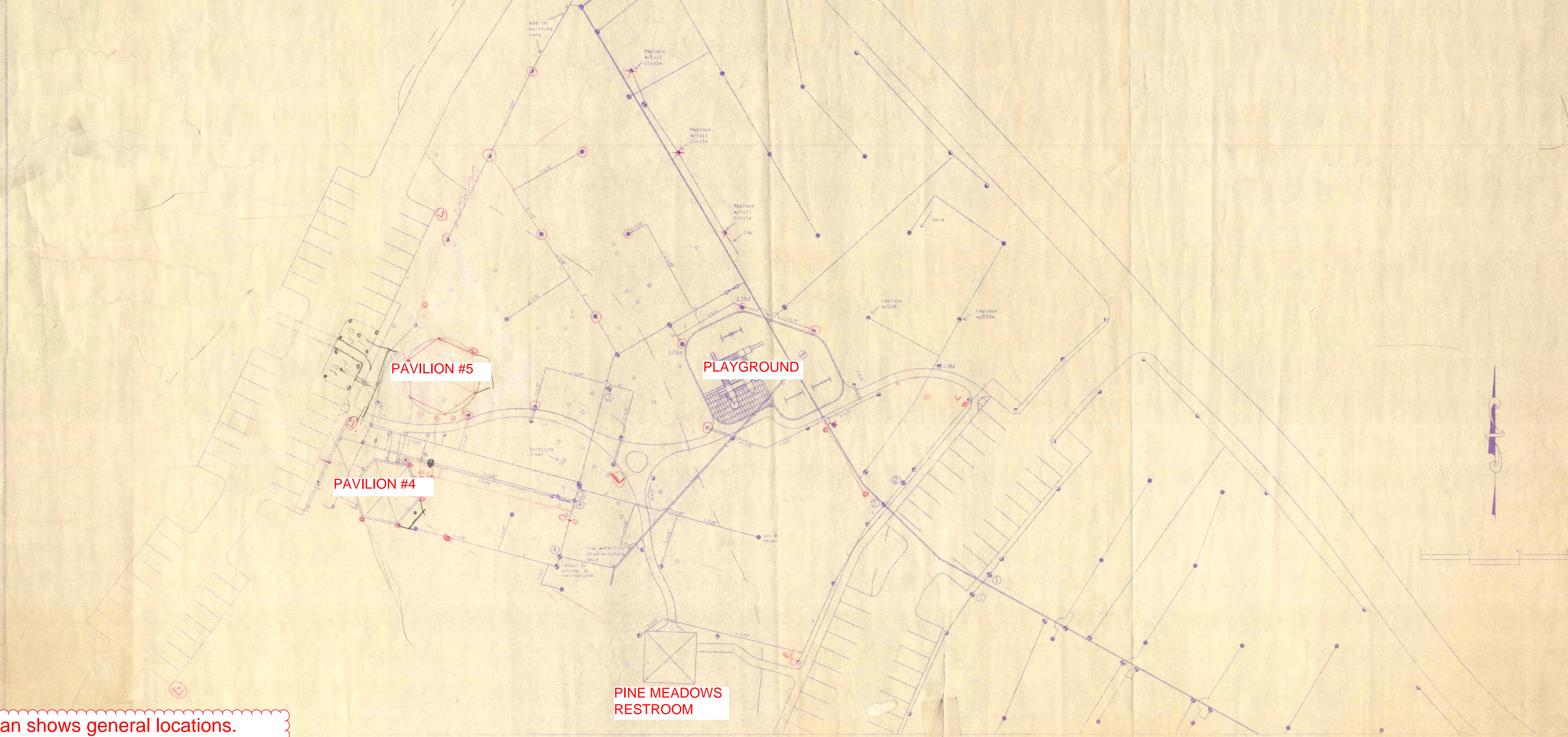




Pavilion Zone

SYMBOL	DESCRIPTION	MANUFACTURER
—	3" MAINLINE PIPE	SCHEDULE 40 PVC
—	1-1/2" LATERAL LINE	CLASS 200 PVC 1600 L.F.
—	2" LATERAL LINE	CLASS 200 PVC 500 L.F.
—	4" SLEEVING	SCHEDULE 80 PVC
⊕	REMOTE CONTROL VALVE	WEATHERMATIC 8000 SERIES 1-1/2" - 2" BRASS VALVE
⊕	QUICK COUPLER VALVE	1" QUICK COUPLER
⊕	VALVE SPLITTER	NIS SWITCH HITTER #5H-230 - 2 STATION
⊕	GATE VALVE	3" BRASS THREADED
⊕	GATE VALVE	1-1/2" BRASS THREADED
⊕	PRESSURE RED. VALVE	1-1/2" BRASS PRESSURE RED.
⊕	TURF SPRAY HEAD	TORO 640 FULL CIRCLE / 42 NOZZEL
⊕	TURF SPRAY HEAD	TORO 640 HALF CIRCLE / 40 NOZZEL
⊕	TURF SPRAY HEAD	TORO 640 QUARTER CIRCLE / 40 NOZZEL
⊕	TURF SPRAY HEAD	TORO 570 15' RADIUS FULL CIRCLE
⊕	TURF SPRAY HEAD	TORO 570 15' RADIUS HALF CIRCLE
⊕	TURF SPRAY HEAD	TORO 570 15' RADIUS QUARTER CIRCLE

NOTES:
SEE PLAN FOR ADDITIONAL SPRINKLER HEAD RADII



PAVILION #5

PLAYGROUND

PAVILION #4

PINE MEADOWS RESTROOM



2002 CREEK CROSSING
COLORADO SPRINGS, CO 80908
(719) 520-8376

DATE: 8-8-86
REVISIONS: 8-20-86

IRRIGATION EXTENSION
FOX RUN REGIONAL PARK / PINE MEADOWS

SHEET #
1 of 1

*Plan shows general locations.
Actual locations to be field verified

2/1/87
revised to match plan
2/1/87

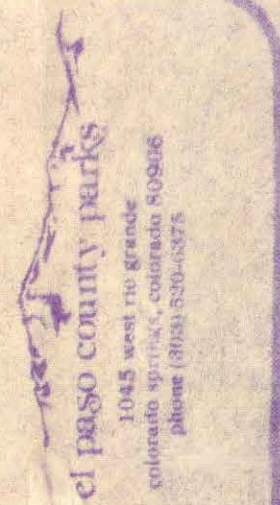
WETWELL AND PUMP LOCATION

SEE SHEET 2 of 2 FOR DETAIL

SHEET
1 OF 2

DESIGNED BY: _____
DRAWN BY: _____
APPROVAL: _____
DATE: _____

FOX RUN REGIONAL PARK
IRRIGATION SYSTEM PHASE I

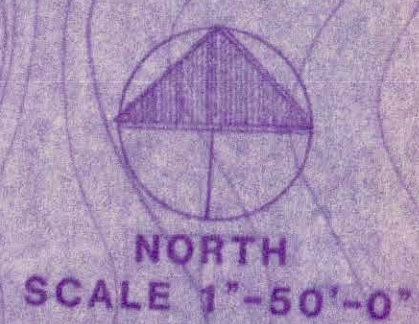


CIRCUMFERENTIAL



OAK
MEADOWS
RESTROOM

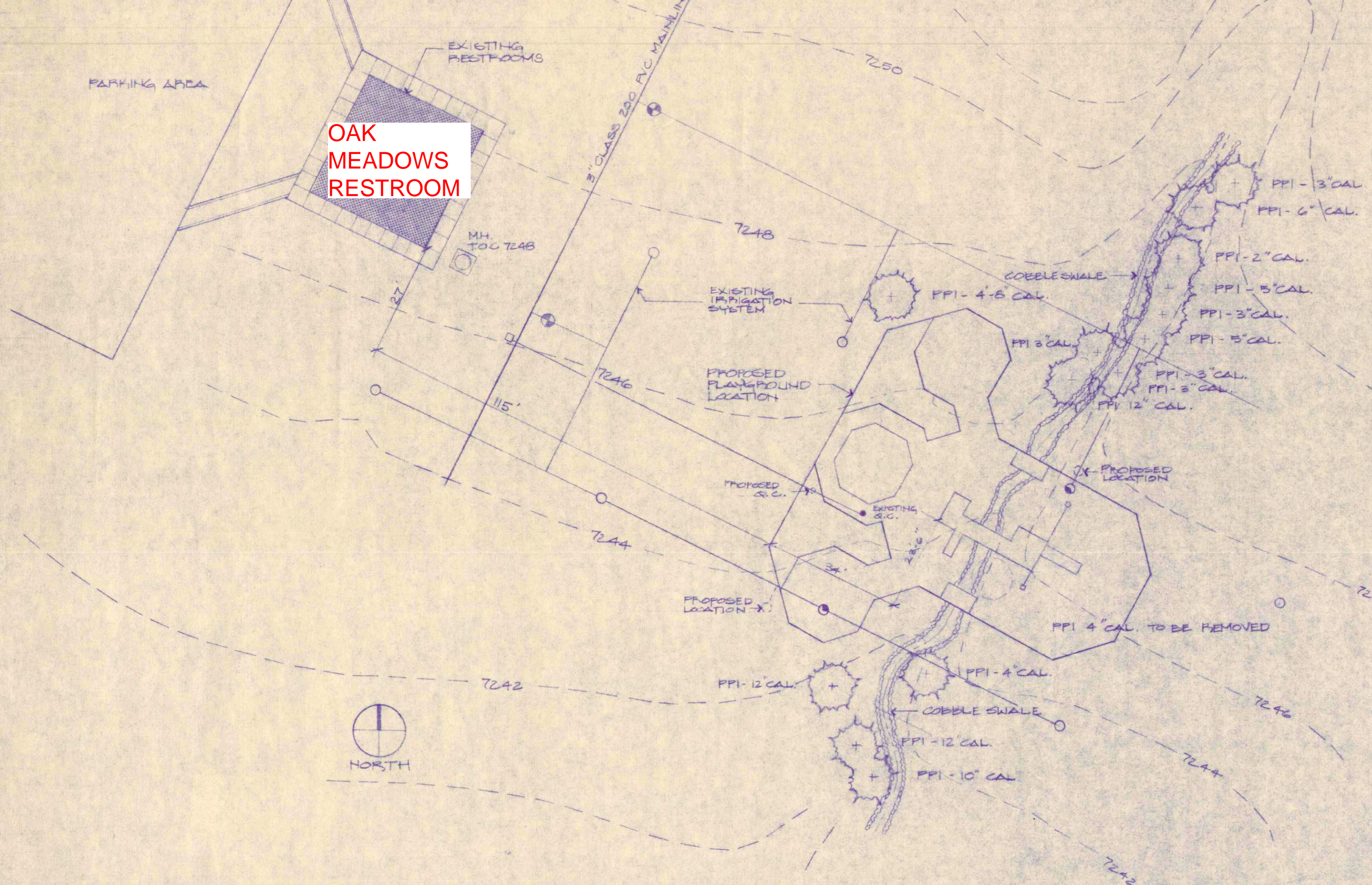
PROPOSED
PLAYGROUND
LOCATION



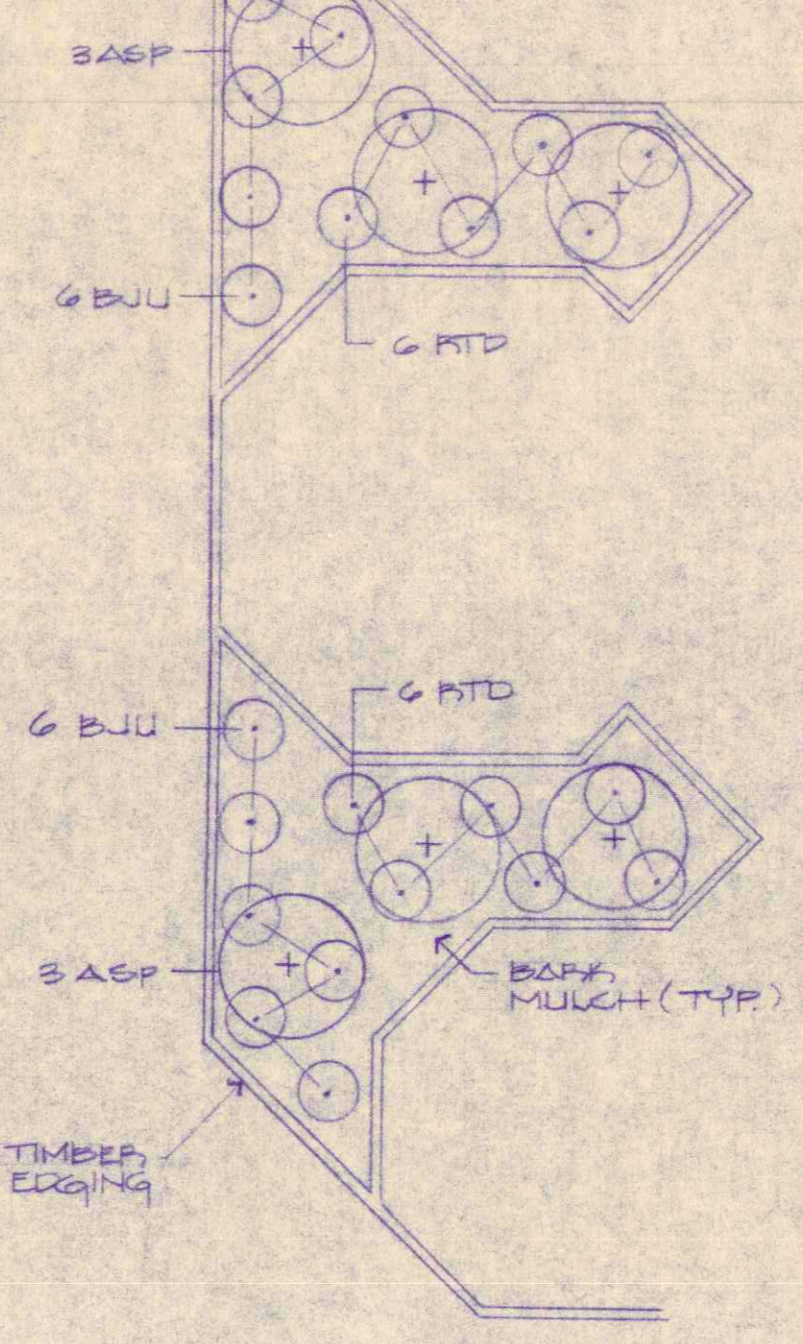
*Plan shows general locations.
Actual locations to be field verified

SEE SHEET 2 of 2 FOR KEY AND INSTALLATION DETAILS

OAK MEADOWS RESTROOM

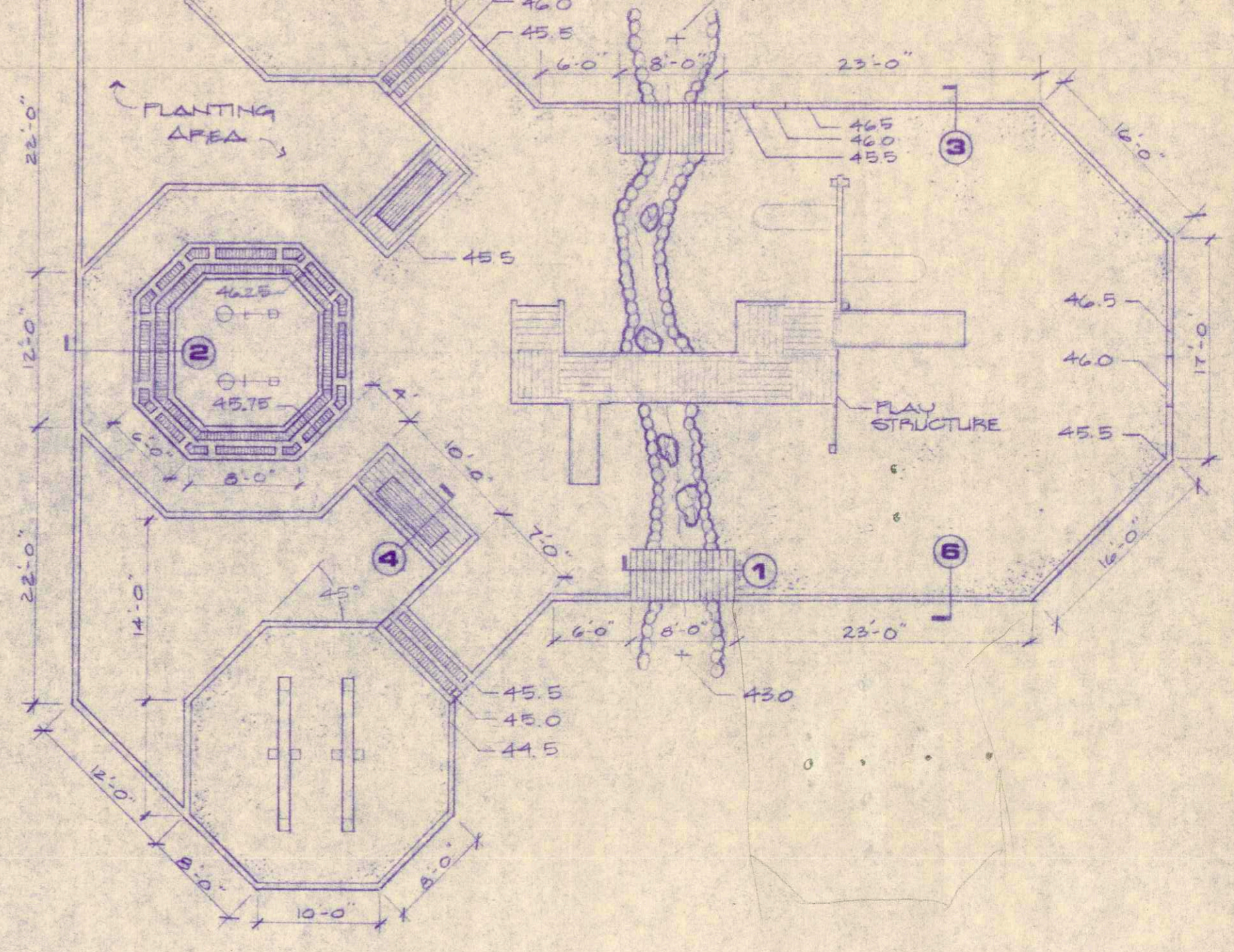


C SITE PLAN PLAN SCALE 1"=20'



B LANDSCAPE PLAN PLAN SCALE 1"=10'

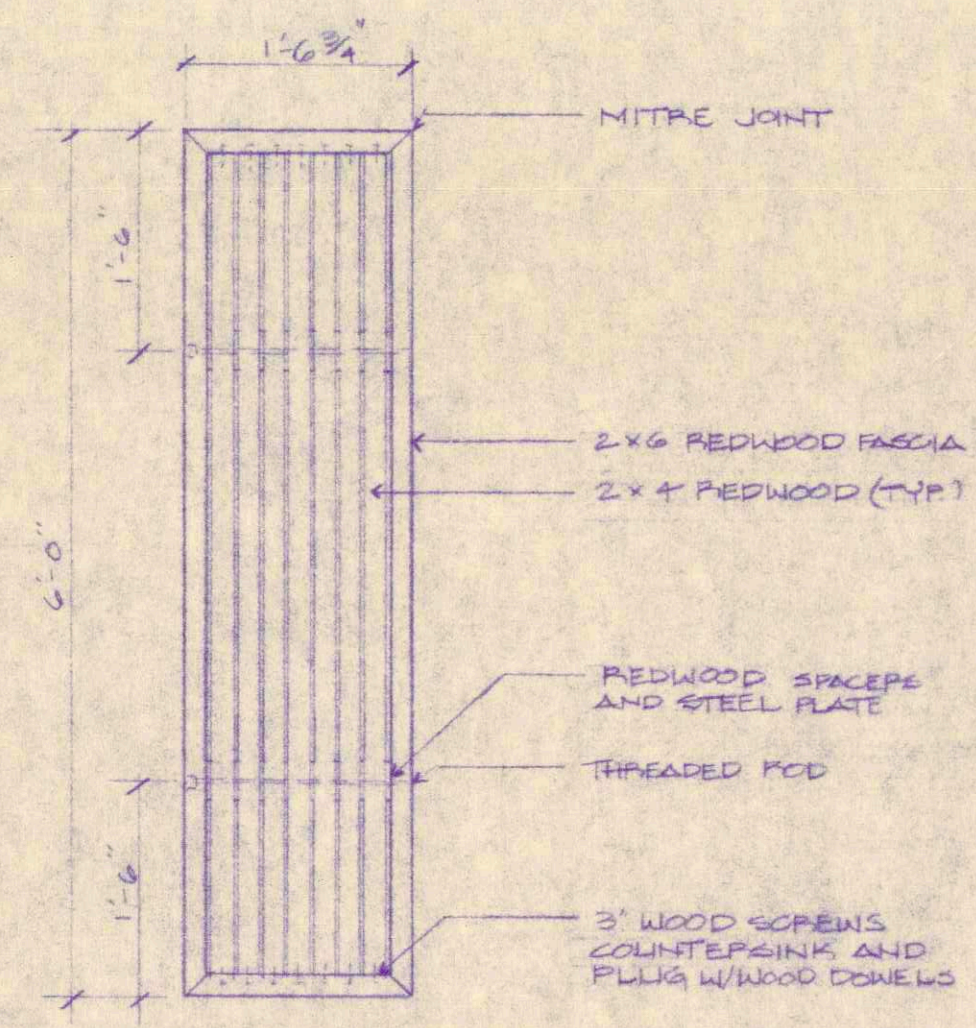
SYMBOL	QTY	COMMON NAME	SIZE
ASP	6	GLAZING ASPEN	12" x 14" HT.
BJU	12	BUFFALO JUNIPER	5 GAL.
RTD	12	REDTIG DOGWOOD	5 GAL.



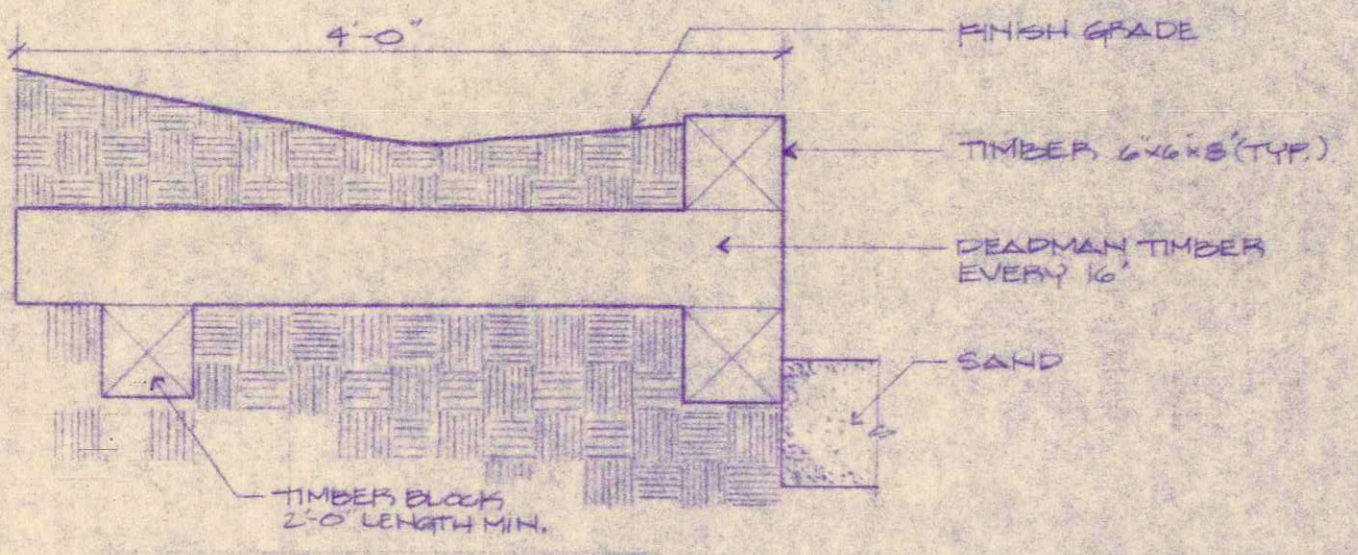
A LAYOUT PLAN PLAN SCALE 1"=10'

GENERAL CONSTRUCTION NOTES

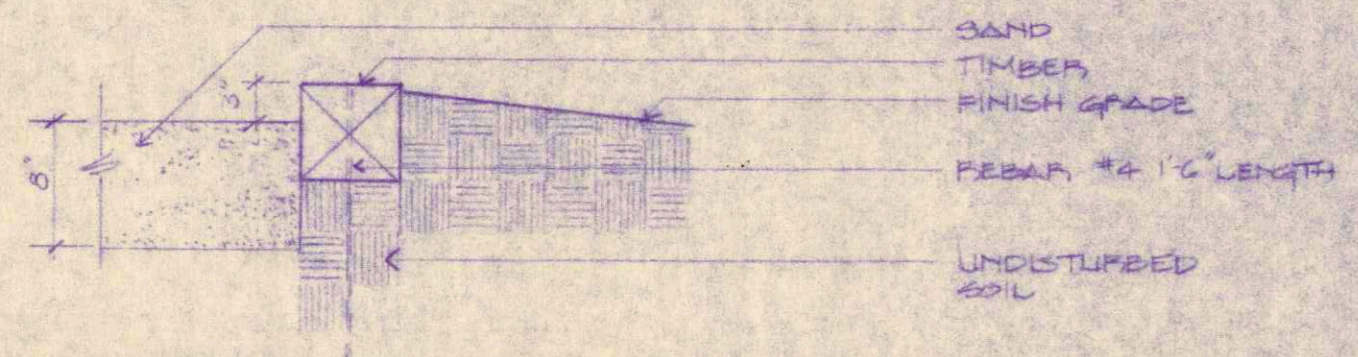
1. PLAYGROUND EQUIPMENT TO BE INSTALLED PER MANUFACTURERS RECOMMENDATION.
2. DRAINAGE TO BE ROUTED THROUGH COBBLE SWALE WITH A MINIMUM SLOPE OF 2%.



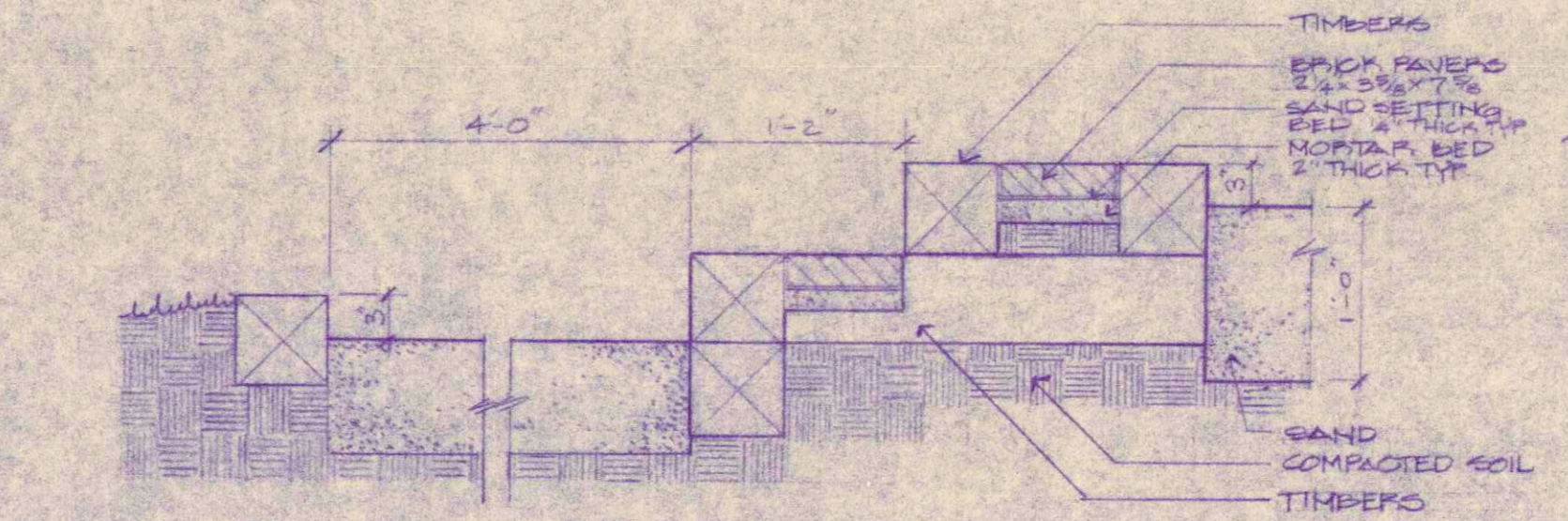
7 WOOD BENCH PLAN SCALE 3/4"=1'-0"



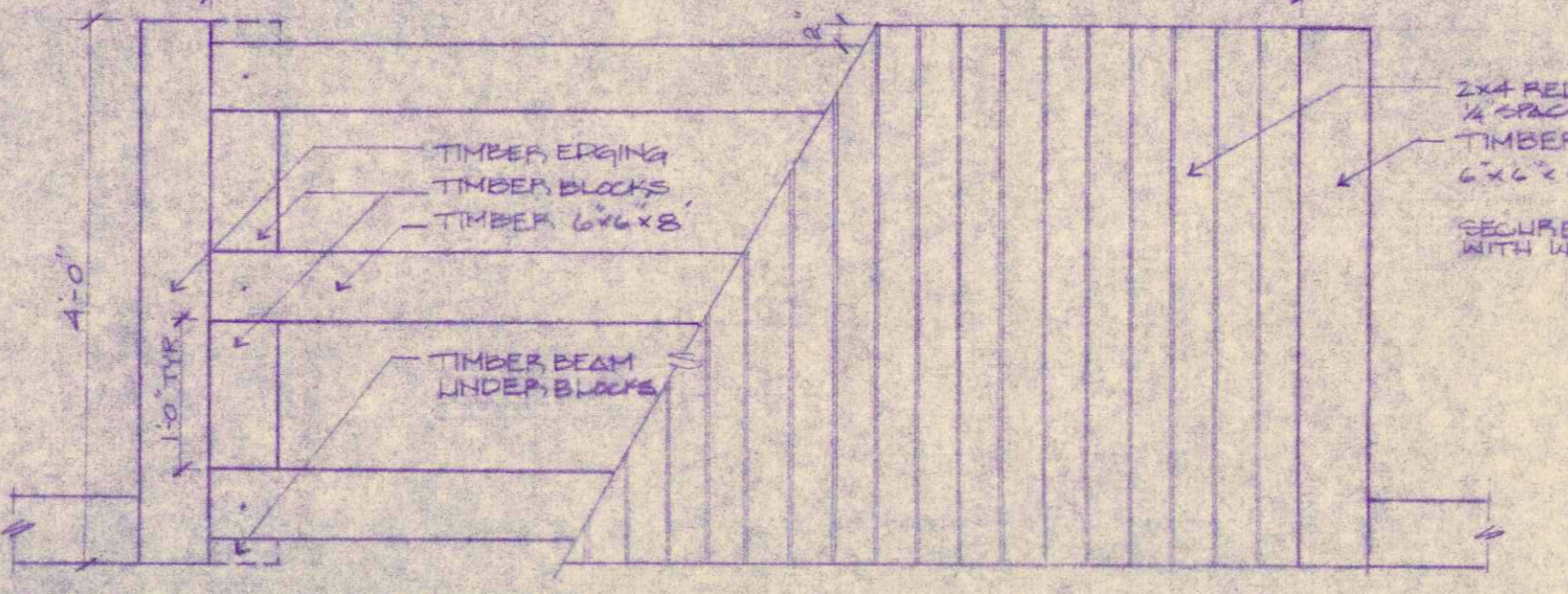
3 RETAINING WALL SECTION SCALE 1"=1'-0"



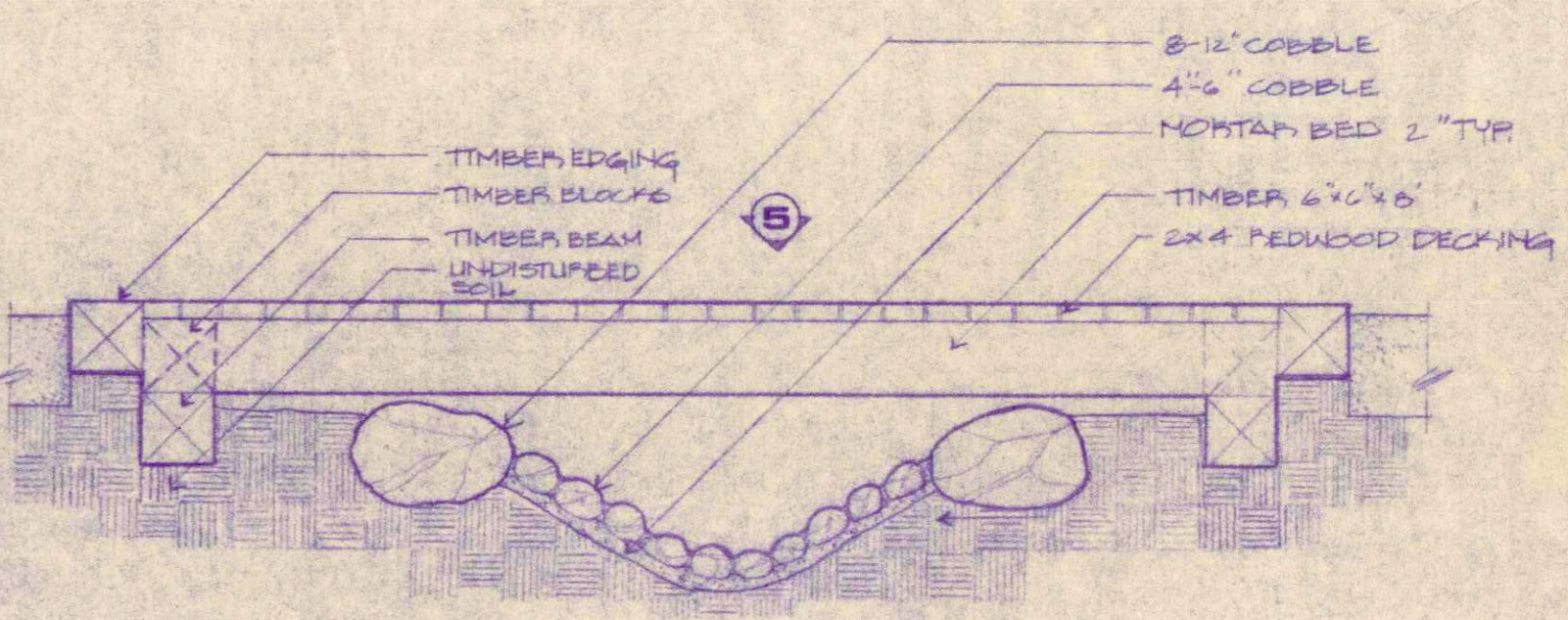
6 TYPICAL TIMBER EDGER SECTION SCALE 1"=1'-0"



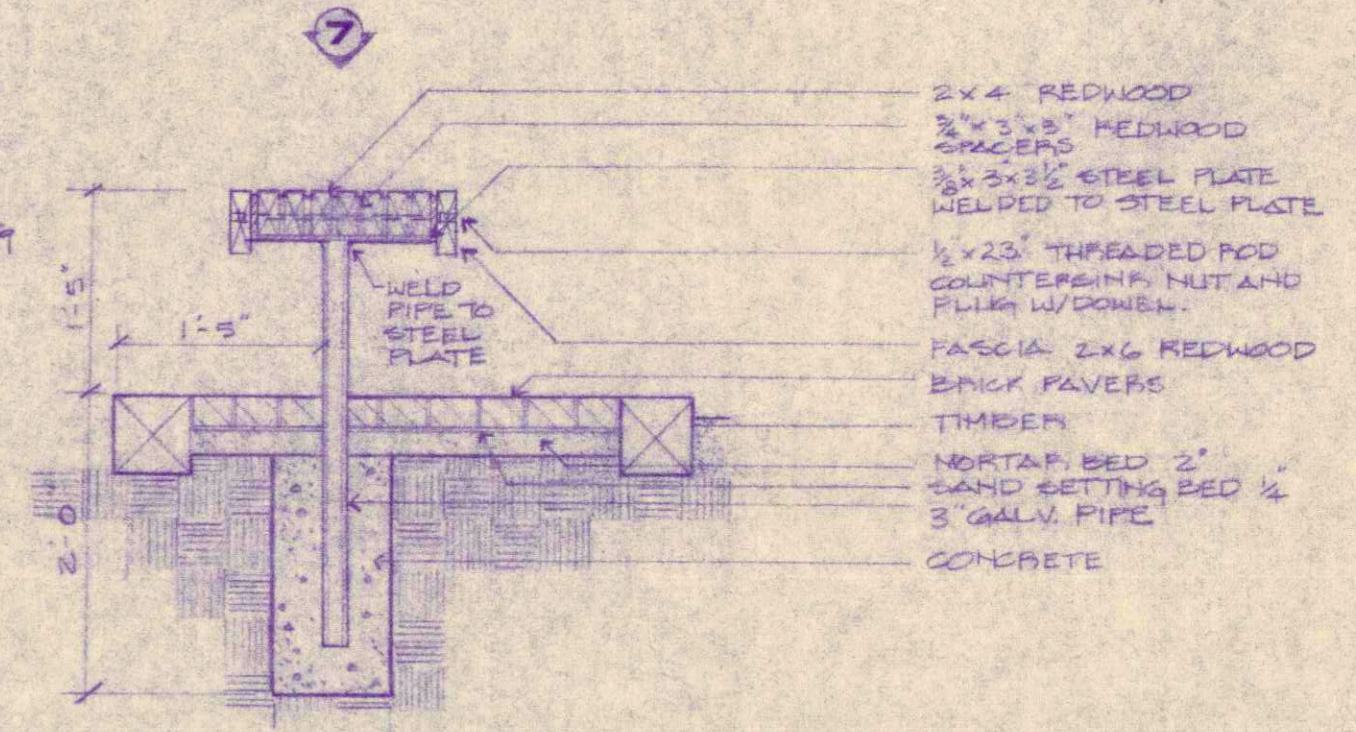
2 BRICK / TIMBER STAIRS SECTION SCALE 1"=1'-0"



5 WOOD BRIDGE PLAN SCALE 3/4"=1'-0"



1 COBBLE SWALE / WOOD BRIDGE SECTION SCALE 3/4"=1'-0"



4 WOOD BENCH SECTION SCALE 3/4"=1'-0"

*Plan shows general locations. Actual locations to be field verified

DESIGNED BY: JSE
 DRAWN BY: JSE
 APPROVAL: [Signature]
 DATE: 5/21/07
 REV: 4/5/05 PERCH

FOX RUN REGIONAL PARK
 PARK PLAYGROUND
 LAYOUT PLAN

el paso county parks
 1015 west 4th street
 colorado springs, colorado 80906
 phone (303) 471-5688