

- GENERAL NOTES:
1. DISCONNECT AND REMOVE EX COVE LIGHTS. SEE DEMO LTG PLAN, TYPE P.
 2. FIELD VERIFY AVAILABLE WIDTH FOR TYPE P OR P8 FIXTURES. INSTALLING EITHER, 4 FT OR 8 FT UNIT AS SPACE ALLOWS. IDEALLY, ALL FIXTURES ARE SAME LENGTH.
 3. FIELD ADJUST ANGLE WHICH UNITS ARE INTD TO ELIMINATE DIRECT ILLUMINATION OF AIR GRILLES ON BACK WALL OF EACH COVE; & WITHOUT ANY LINE-OF-SIGHT TO LEDS FROM FLOOR. SEE COVE SECTION BELOW.

PLEASE NOTE:
REFLECTED CEILING PLAN MAY NOT MATCH ACTUAL INSTALLED CONDITIONS.

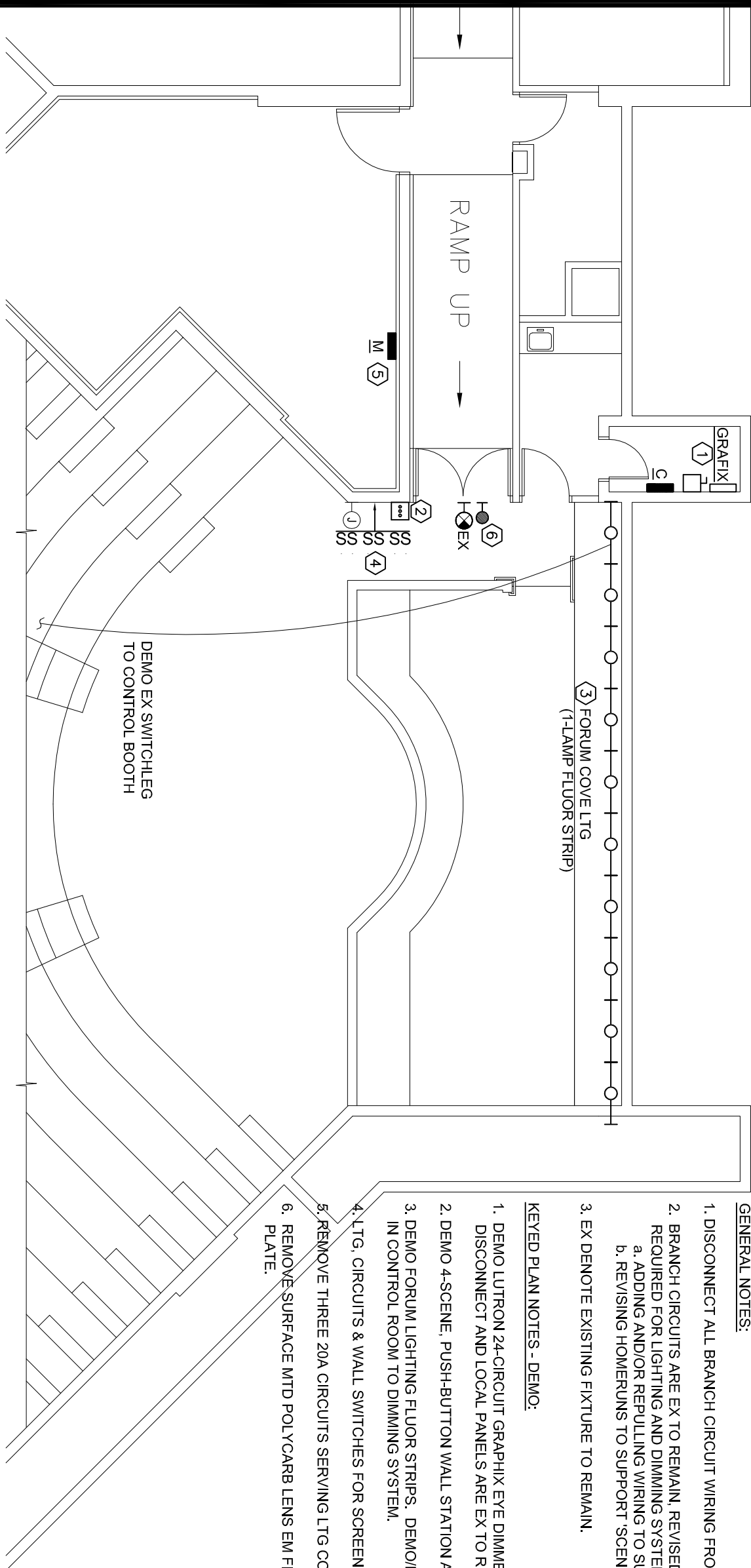
PLAN - CEILING COVE - LIGHTING
SCALE: 1/8" = 1' - 0"

COVE SECTION
NO SCALE

- GENERAL NOTES:
1. DISCONNECT ALL BRANCH CIRCUIT WIRING FROM DIMMER PANEL, BEING REMOVED.
 2. BRANCH CIRCUITS ARE EX TO REMAIN, REVISED TO SUPPORT FINAL WIRING REQUIRED FOR LIGHTING AND DIMMING SYSTEM UPGRADES, INCLUDING:
a. ADDING AND/OR REWIRING TO SUPPORT 0-10V,
b. REVISING HODERUNS TO SUPPORT SCENES AS DIRECTED BY OWNER.
 3. EX DEMOTE EXISTING FIXTURE TO REMAIN.

KEYED PLAN NOTES - DEMO:

1. DEMO UTRON 24-CIRCUIT GRAPHIX EYE DIMMER PANEL, FED BY LOCAL DISC.
2. DEMO 4-SCENE PUSH-BUTTON WALL STATION AND REPLACE.
3. DEMO FORUM LIGHTING FLUOR STRIPS. DEMONSTRATE CONTROL FROM SWITCH IN CONTROL ROOM TO DIMMING SYSTEM.
4. LTG, CIRCUITS & WALL SWITCHES FOR SCREENS, SHADES ARE EX TO REMAIN.
5. REMOVE THREE 20A CIRCUITS SERVING LTG CONTROLS AND MARK AS SPARE PLATE.
6. REMOVE SURFACE INTD POLYCARB LENS EM FIXTURE AND CAP, J-BOX WITH BLANK PLATE.

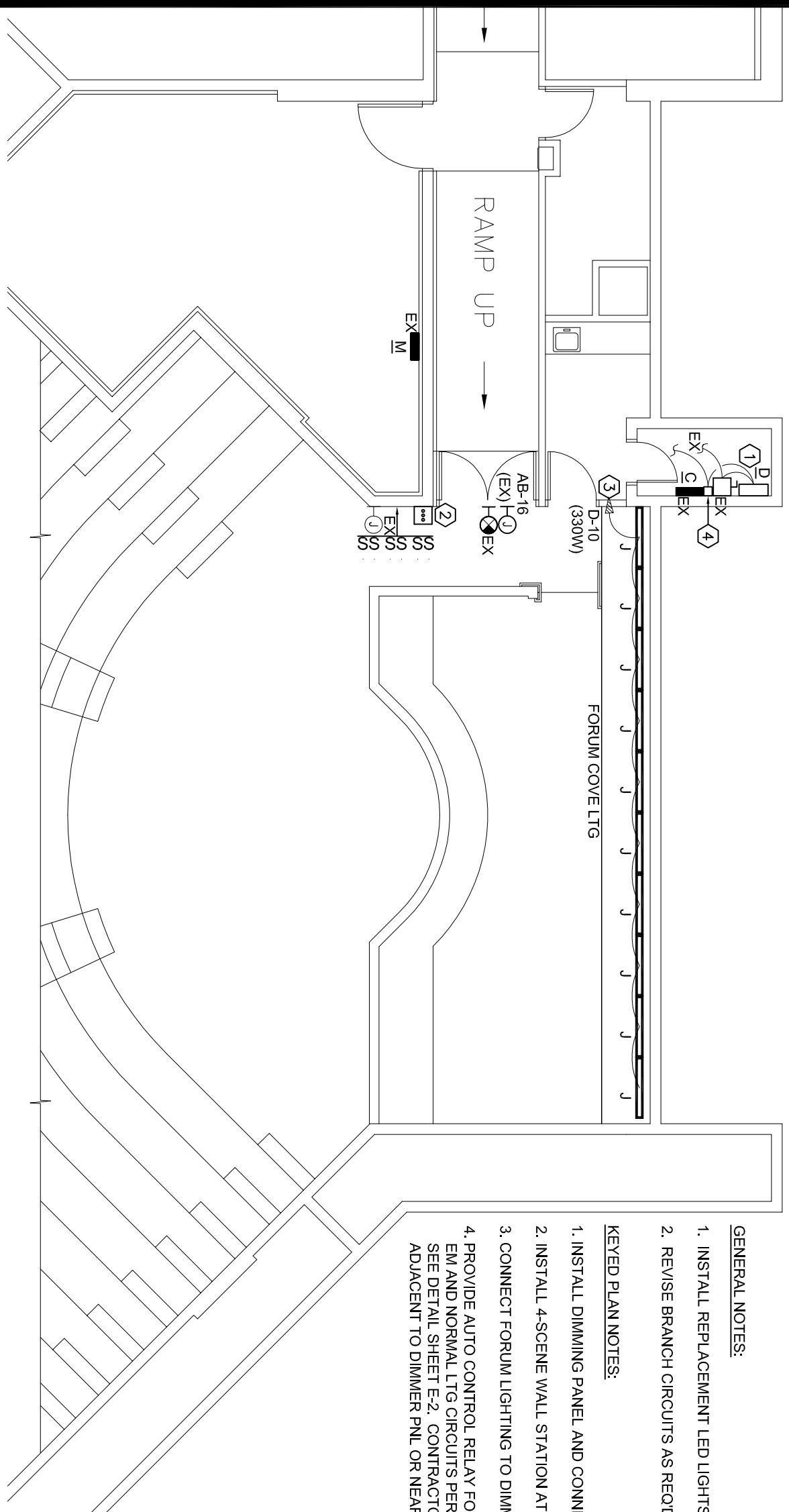


FLOOR PLAN - LOWER LEVEL - LTG DEMO
SCALE: 1/8" = 1' - 0"

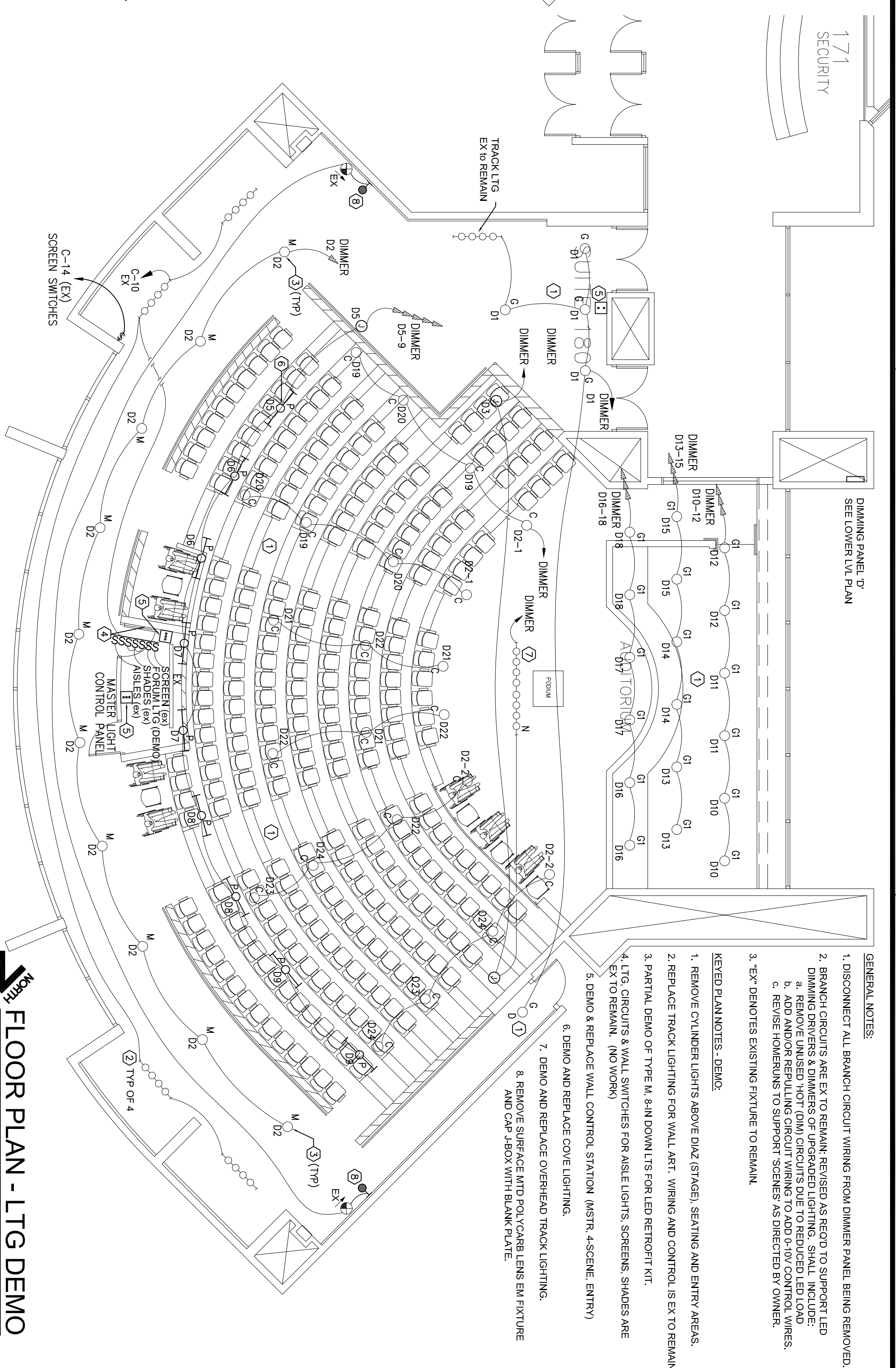
- GENERAL NOTES:
1. INSTALL REPLACEMENT LED LIGHTS AT FORUM (COVE).
 2. REVISE BRANCH CIRCUITS AS NEEDED TO SUPPORT LED DIMMING.

KEYED PLAN NOTES:

1. INSTALL DIMMING PANEL AND CONNECT TO EXISTING DISC SWITCH.
2. INSTALL 4-SCENE WALL STATION AT SPARE BACKBOX.
3. CONNECT FORUM LIGHTING TO DIMMER PANEL.
4. PROVIDE AUTO CONTROL RELAY FOR EM EGRESS LIGHTING, WIRED TO SEE DETAIL SHEET E-2. CONTRACTOR TO FIELD COORDINATE INTD DEVICES ADJACENT TO DIMMER PNL OR NEAR EM LIGHTING AS SHOWN ON PLANS.



FLOOR PLAN - LOWER LEVEL - LIGHTING
SCALE: 1/8" = 1' - 0"



- GENERAL NOTES:
1. DISCONNECT ALL BRANCH CIRCUIT WIRING FROM DIMMER PANEL, BEING REMOVED.
 2. BRANCH CIRCUITS ARE EX TO REMAIN, REVISED AS NEEDED TO SUPPORT LED DIMMING DRIVERS & DIMMERS OF UPGRADED LIGHTING. SHALL INCLUDE:
a. REMOVE UNUSED HOT (DM) CIRCUITS DUE TO REDUCED LED LOAD.
b. ADD AND/OR REWIRING TO SUPPORT 0-10V CONTROL WIRING.
c. REVISE HODERUNS TO SUPPORT SCENES AS DIRECTED BY OWNER.
 3. EX, DEMOTE EXISTING FIXTURE TO REMAIN.

KEYED PLAN NOTES - DEMO:

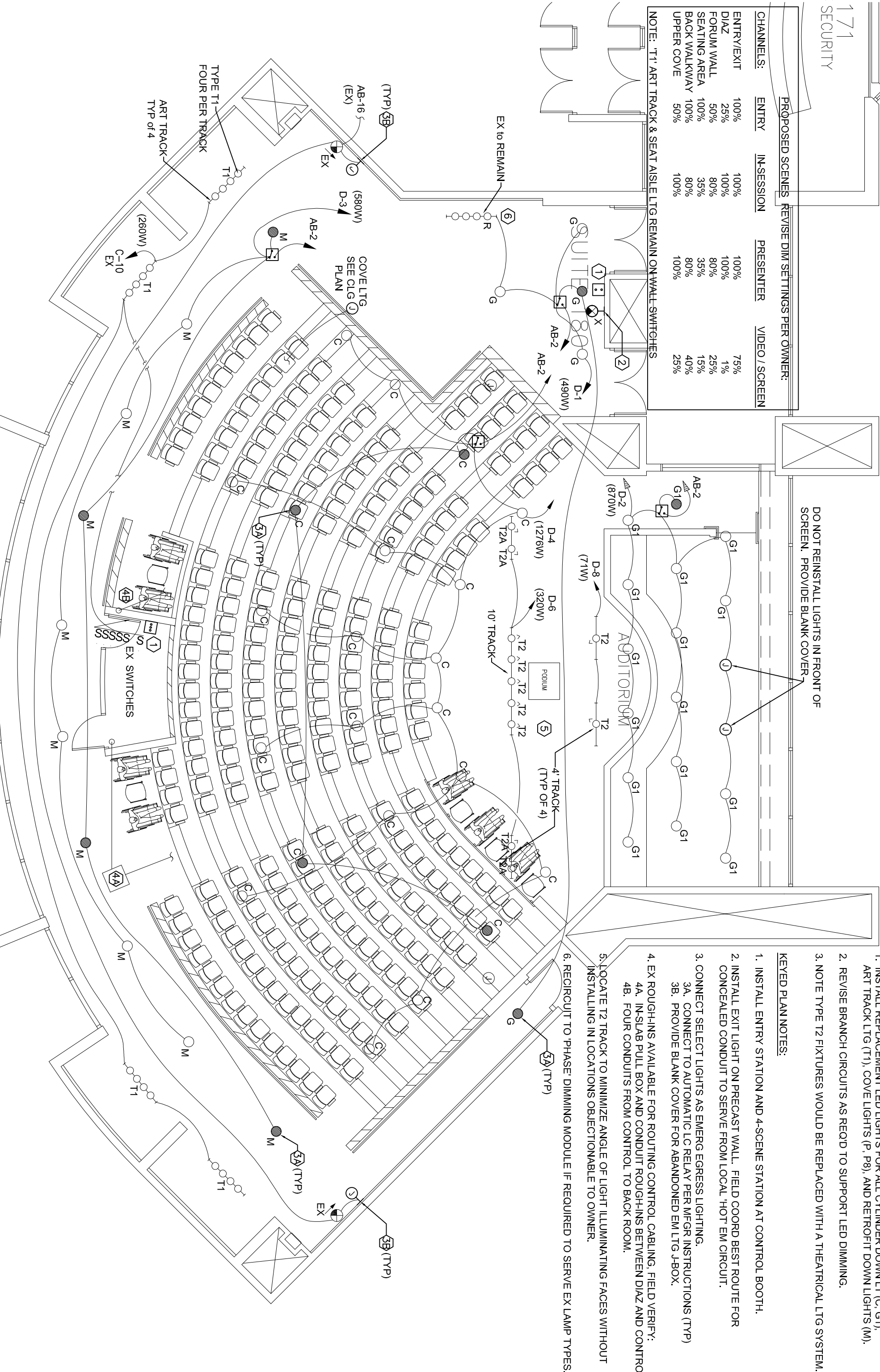
1. REMOVE CHUNDER LIGHTS ABOVE DIAZ (STAGE), SEATING AND ENTRY AREAS.
2. REPLACE TRACK LIGHTING FOR WALL ART. WIRING AND CONTROL KIT.
3. PARTIAL DEMO OF TYPE M 8-IN DOWN LIT FOR LED RETROFIT KIT.
4. LTG, CIRCUITS & WALL SWITCHES FOR ASILE LIGHTS, SCREENS, SHADES ARE EX TO REMAIN. (NO WORK)
5. DEMO & REPLACE WALL CONTROL STATION (MSTR, 4-SCENE, ENTRY)
6. DEMO AND REPLACE COVE LIGHTING.
7. DEMO AND REPLACE OVERHEAD TRACK LIGHTING.
8. REMOVE SURFACE INTD POLYCARB LENS EM FIXTURE AND CAP, J-BOX WITH BLANK PLATE.

FLOOR PLAN - LTG DEMO
SCALE: 1/8" = 1' - 0"

- GENERAL NOTES:
1. INSTALL REPLACEMENT LED LIGHTS FOR ALL CHUNDER POINT (C, C1).
 2. DEMO UTRON 24-CIRCUIT GRAPHIX EYE DIMMER PANEL, FED BY LOCAL DISC.
 3. DEMO 4-SCENE PUSH-BUTTON WALL STATION AND REPLACE.
 4. LTG, CIRCUITS & WALL SWITCHES FOR SCREENS, SHADES ARE EX TO REMAIN.
 5. REMOVE THREE 20A CIRCUITS SERVING LTG CONTROLS AND MARK AS SPARE PLATE.
 6. REMOVE SURFACE INTD POLYCARB LENS EM FIXTURE AND CAP, J-BOX WITH BLANK PLATE.

KEYED PLAN NOTES:

1. INSTALL ENTRY STATION AND 4-SCENE STATION AT CONTROL BOOTH.
2. INSTALL EXISTING OUTRECAST WALL, FIELD COORD BEST ROUTE FOR CONCEALED CONDUIT TO SERVE FROM LOCAL, HOT EM CIRCUIT.
3. CONNECT SELECT LIGHTS AS EMERG EGRESS LIGHTING.
4. PROVIDE BLANK COVER FOR ABANDONED BALL TO J-BOX.
5. EX ROUTINGS AVAILABLE FOR ROUTING CONTROL CABLEING, FIELD VERIFY.
6. PROVIDE BLANK COVER FOR ABANDONED BALL TO J-BOX.
7. PROVIDE BLANK COVER FOR ABANDONED BALL TO J-BOX.
8. PROVIDE BLANK COVER FOR ABANDONED BALL TO J-BOX.
9. PROVIDE BLANK COVER FOR ABANDONED BALL TO J-BOX.
10. PROVIDE BLANK COVER FOR ABANDONED BALL TO J-BOX.
11. PROVIDE BLANK COVER FOR ABANDONED BALL TO J-BOX.
12. PROVIDE BLANK COVER FOR ABANDONED BALL TO J-BOX.
13. PROVIDE BLANK COVER FOR ABANDONED BALL TO J-BOX.
14. PROVIDE BLANK COVER FOR ABANDONED BALL TO J-BOX.
15. PROVIDE BLANK COVER FOR ABANDONED BALL TO J-BOX.
16. PROVIDE BLANK COVER FOR ABANDONED BALL TO J-BOX.
17. PROVIDE BLANK COVER FOR ABANDONED BALL TO J-BOX.
18. PROVIDE BLANK COVER FOR ABANDONED BALL TO J-BOX.
19. PROVIDE BLANK COVER FOR ABANDONED BALL TO J-BOX.
20. PROVIDE BLANK COVER FOR ABANDONED BALL TO J-BOX.
21. PROVIDE BLANK COVER FOR ABANDONED BALL TO J-BOX.
22. PROVIDE BLANK COVER FOR ABANDONED BALL TO J-BOX.
23. PROVIDE BLANK COVER FOR ABANDONED BALL TO J-BOX.
24. PROVIDE BLANK COVER FOR ABANDONED BALL TO J-BOX.
25. PROVIDE BLANK COVER FOR ABANDONED BALL TO J-BOX.
26. PROVIDE BLANK COVER FOR ABANDONED BALL TO J-BOX.
27. PROVIDE BLANK COVER FOR ABANDONED BALL TO J-BOX.
28. PROVIDE BLANK COVER FOR ABANDONED BALL TO J-BOX.
29. PROVIDE BLANK COVER FOR ABANDONED BALL TO J-BOX.
30. PROVIDE BLANK COVER FOR ABANDONED BALL TO J-BOX.
31. PROVIDE BLANK COVER FOR ABANDONED BALL TO J-BOX.
32. PROVIDE BLANK COVER FOR ABANDONED BALL TO J-BOX.
33. PROVIDE BLANK COVER FOR ABANDONED BALL TO J-BOX.
34. PROVIDE BLANK COVER FOR ABANDONED BALL TO J-BOX.
35. PROVIDE BLANK COVER FOR ABANDONED BALL TO J-BOX.
36. PROVIDE BLANK COVER FOR ABANDONED BALL TO J-BOX.
37. PROVIDE BLANK COVER FOR ABANDONED BALL TO J-BOX.
38. PROVIDE BLANK COVER FOR ABANDONED BALL TO J-BOX.
39. PROVIDE BLANK COVER FOR ABANDONED BALL TO J-BOX.
40. PROVIDE BLANK COVER FOR ABANDONED BALL TO J-BOX.
41. PROVIDE BLANK COVER FOR ABANDONED BALL TO J-BOX.
42. PROVIDE BLANK COVER FOR ABANDONED BALL TO J-BOX.
43. PROVIDE BLANK COVER FOR ABANDONED BALL TO J-BOX.
44. PROVIDE BLANK COVER FOR ABANDONED BALL TO J-BOX.
45. PROVIDE BLANK COVER FOR ABANDONED BALL TO J-BOX.
46. PROVIDE BLANK COVER FOR ABANDONED BALL TO J-BOX.
47. PROVIDE BLANK COVER FOR ABANDONED BALL TO J-BOX.
48. PROVIDE BLANK COVER FOR ABANDONED BALL TO J-BOX.
49. PROVIDE BLANK COVER FOR ABANDONED BALL TO J-BOX.
50. PROVIDE BLANK COVER FOR ABANDONED BALL TO J-BOX.
51. PROVIDE BLANK COVER FOR ABANDONED BALL TO J-BOX.
52. PROVIDE BLANK COVER FOR ABANDONED BALL TO J-BOX.
53. PROVIDE BLANK COVER FOR ABANDONED BALL TO J-BOX.
54. PROVIDE BLANK COVER FOR ABANDONED BALL TO J-BOX.
55. PROVIDE BLANK COVER FOR ABANDONED BALL TO J-BOX.
56. PROVIDE BLANK COVER FOR ABANDONED BALL TO J-BOX.
57. PROVIDE BLANK COVER FOR ABANDONED BALL TO J-BOX.
58. PROVIDE BLANK COVER FOR ABANDONED BALL TO J-BOX.
59. PROVIDE BLANK COVER FOR ABANDONED BALL TO J-BOX.
60. PROVIDE BLANK COVER FOR ABANDONED BALL TO J-BOX.
61. PROVIDE BLANK COVER FOR ABANDONED BALL TO J-BOX.
62. PROVIDE BLANK COVER FOR ABANDONED BALL TO J-BOX.
63. PROVIDE BLANK COVER FOR ABANDONED BALL TO J-BOX.
64. PROVIDE BLANK COVER FOR ABANDONED BALL TO J-BOX.
65. PROVIDE BLANK COVER FOR ABANDONED BALL TO J-BOX.
66. PROVIDE BLANK COVER FOR ABANDONED BALL TO J-BOX.
67. PROVIDE BLANK COVER FOR ABANDONED BALL TO J-BOX.
68. PROVIDE BLANK COVER FOR ABANDONED BALL TO J-BOX.
69. PROVIDE BLANK COVER FOR ABANDONED BALL TO J-BOX.
70. PROVIDE BLANK COVER FOR ABANDONED BALL TO J-BOX.
71. PROVIDE BLANK COVER FOR ABANDONED BALL TO J-BOX.
72. PROVIDE BLANK COVER FOR ABANDONED BALL TO J-BOX.
73. PROVIDE BLANK COVER FOR ABANDONED BALL TO J-BOX.
74. PROVIDE BLANK COVER FOR ABANDONED BALL TO J-BOX.
75. PROVIDE BLANK COVER FOR ABANDONED BALL TO J-BOX.
76. PROVIDE BLANK COVER FOR ABANDONED BALL TO J-BOX.
77. PROVIDE BLANK COVER FOR ABANDONED BALL TO J-BOX.
78. PROVIDE BLANK COVER FOR ABANDONED BALL TO J-BOX.
79. PROVIDE BLANK COVER FOR ABANDONED BALL TO J-BOX.
80. PROVIDE BLANK COVER FOR ABANDONED BALL TO J-BOX.
81. PROVIDE BLANK COVER FOR ABANDONED BALL TO J-BOX.
82. PROVIDE BLANK COVER FOR ABANDONED BALL TO J-BOX.
83. PROVIDE BLANK COVER FOR ABANDONED BALL TO J-BOX.
84. PROVIDE BLANK COVER FOR ABANDONED BALL TO J-BOX.
85. PROVIDE BLANK COVER FOR ABANDONED BALL TO J-BOX.
86. PROVIDE BLANK COVER FOR ABANDONED BALL TO J-BOX.
87. PROVIDE BLANK COVER FOR ABANDONED BALL TO J-BOX.
88. PROVIDE BLANK COVER FOR ABANDONED BALL TO J-BOX.
89. PROVIDE BLANK COVER FOR ABANDONED BALL TO J-BOX.
90. PROVIDE BLANK COVER FOR ABANDONED BALL TO J-BOX.
91. PROVIDE BLANK COVER FOR ABANDONED BALL TO J-BOX.
92. PROVIDE BLANK COVER FOR ABANDONED BALL TO J-BOX.
93. PROVIDE BLANK COVER FOR ABANDONED BALL TO J-BOX.
94. PROVIDE BLANK COVER FOR ABANDONED BALL TO J-BOX.
95. PROVIDE BLANK COVER FOR ABANDONED BALL TO J-BOX.
96. PROVIDE BLANK COVER FOR ABANDONED BALL TO J-BOX.
97. PROVIDE BLANK COVER FOR ABANDONED BALL TO J-BOX.
98. PROVIDE BLANK COVER FOR ABANDONED BALL TO J-BOX.
99. PROVIDE BLANK COVER FOR ABANDONED BALL TO J-BOX.
100. PROVIDE BLANK COVER FOR ABANDONED BALL TO J-BOX.



FLOOR PLAN - LIGHTING
SCALE: 1/8" = 1' - 0"