

# 2026 Critical Needs Parks Department

**Todd Marts**  
**Executive Director**  
**October 21, 2025**



# Department's Strategic Plan Goals

El Paso County Parks creates a vibrant community and improves the quality of life by providing parks and recreation, educational, and environmental stewardship opportunities.

## **Objective 1: Infrastructure**

Sustainably fund, manage, and improve the departments infrastructure.

## **Objective 2: Service Quality**

Respond to the growing community; Expand public services and connections for the growing community.

## **Objective 4: Health & Safety**

Strengthening community well-being.



# Critical Needs and Justification

## **Critical Need: Bear Creak Regional Parks Tennis Court Project**

**\$800,000**

**BCRP Tennis Courts Total Project Budget - \$2,050,000**

Parks Budget - \$1,250,000

**Critical Needs Request - \$800,000**

### **Project Engineering & Design - \$200,000**

Contract with a professional engineering firm to complete the engineering and design, develop construction documents, and support the project through construction.

### **Tennis / Pickleball Courts - \$750,000**

Convert two closed tennis courts to six pickleball courts; Retain and resurface two tennis courts; Develop a plaza area with shaded seating; Remove lighting and update utilities and irrigation.

### **Archery Range - \$200,000**

Demolish the current structure; Construct a new archery range structure.

### **Playground Renovation - \$200,000**

Demolish the current playground; Construct a new small playground with ADA access.

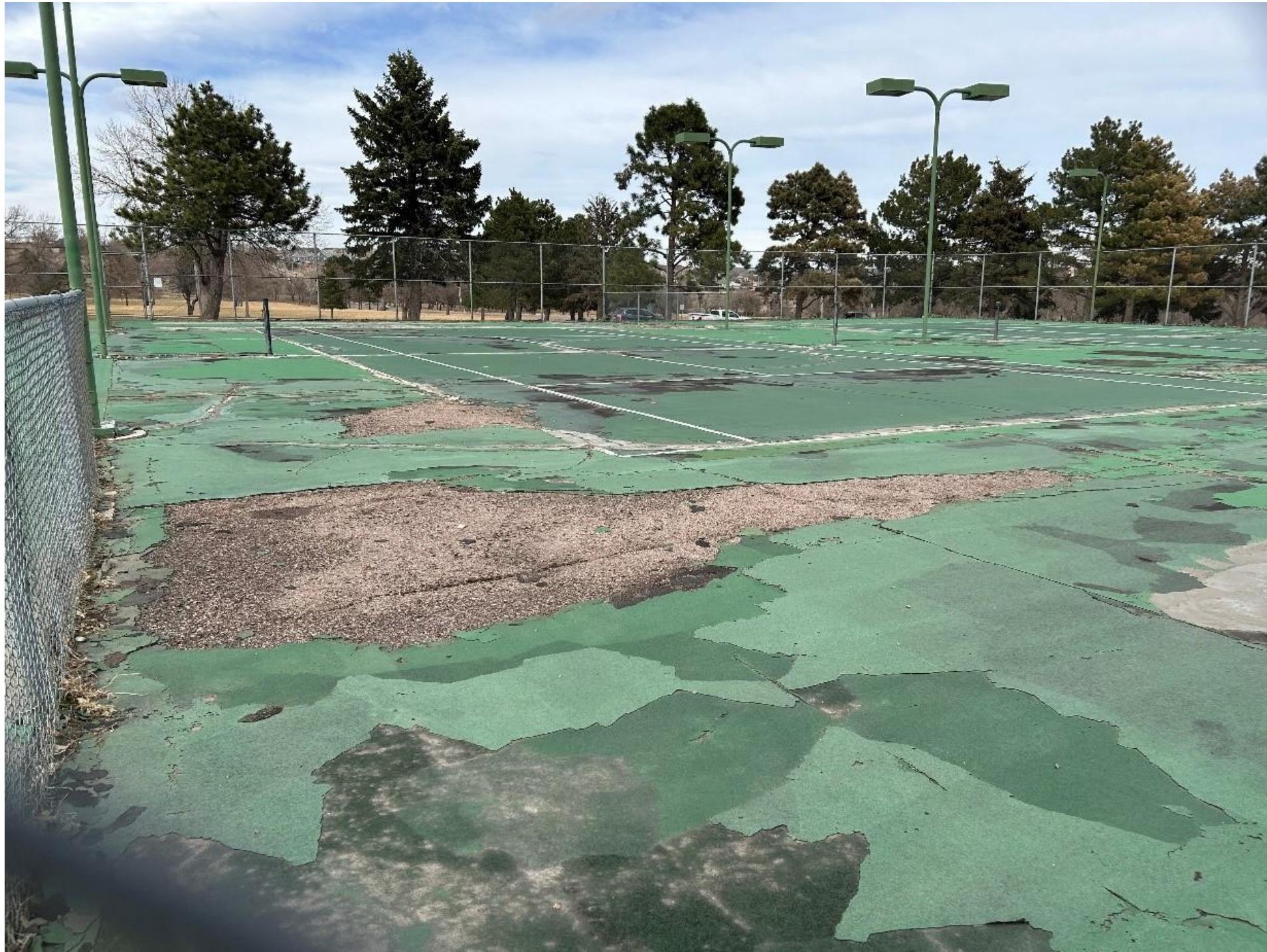
### **Parking Lot - \$700,000**

Expand parking lot; Regrade the entire parking lot; Stormwater infrastructure; Curb, gutter, drainage, sidewalks; Asphalt paving of parking lot; ADA parking spaces, walkways; Reconfigured trail connections.





# Critical Needs and Justification





# Critical Needs and Justification





# Critical Needs and Justification

## Facility Repairs and Upgrades at Bear Creek Regional Park - Pickleball-Tennis Courts and Archery Range Complex

Bear Creek Regional Park is the flagship of El Paso County Parks and is a vital recreational asset for the community.

However, the deteriorating condition of key facilities—including the tennis courts, archery range, and gravel parking lot—has significantly impacted their usability, safety, and maintenance efficiency.

Addressing these issues is essential to restoring recreational opportunities, improving public safety, and reducing the long-term maintenance burden on county staff.





# Critical Needs and Justification

## Alignment with El Paso County's Strategic Plan Values

### **Service Quality & Accountability**

The County is committed to being accountable and service-focused, ensuring that public spaces remain safe, functional, and accessible. The current state of disrepair at Bear Creek Regional Park negatively impacts the quality of recreational services offered. Upgrading these facilities will improve service quality and ensure efficient use of County resources.

### **Community Trust & Engagement**

The Strategic Plan emphasizes community engagement and responsiveness. The park is a heavily utilized public space, and its ongoing deterioration erodes trust in the County's ability to maintain essential recreational services. Renovating the park aligns with Objective 3 – Community Trust, as it demonstrates a commitment to responsive governance and ensures that community feedback about facility needs is addressed.

### **Economic Development & Sustainability**

The Economic Development mission focuses on leveraging resources for community development. Investing in Bear Creek Regional Park supports this by enhancing local recreational infrastructure, which contributes to economic activity through tourism, sports events, and increased park usage. Additionally, modernizing the facilities will reduce ongoing maintenance costs, improving financial sustainability.



# Base Budget & Critical Needs

<u>Business</u>			<u>2026 Critical</u>	
<u>Unit</u>	<u>Description</u>	<u>2026 Base Budget</u>	<u>Needs/Requests</u>	<u>2026 PBB</u>
11225	Parks Administration	3,164,609		3,164,609
11226	Parks Planning	15,000		15,000
11227	Interpretive Services	14,155		14,155
11228	Parks MX District	1,547,116	800,000	2,347,116
11250	CSU Administration	304,114		304,114
	<b>Community Services - GF</b>	<b>5,044,994</b>	<b>800,000</b>	<b>5,844,994</b>
	<b>Community Svcs-Restricted</b>	<b>669,000</b>		<b>679,000</b>
	<b>Conservation Trust Fund</b>	<b>1,471,000</b>		<b>1,840,000</b>







**Questions?**